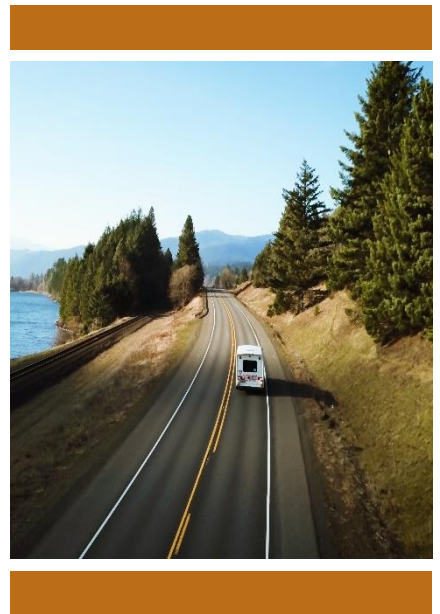


Demographic Profile for Clark, Skamania, and Klickitat Counties

June 2024



Southwest Washington Regional Transportation Council

1300 Franklin Street, Vancouver WA 98660
Telephone: 564-397-6067
Relay Service: #711 or (800) 833-6388
www.rtc.wa.gov



Title VI Notice

RTC operates its programs without regard to race, color, and national origin in accordance with applicable laws, including Title VI of the Civil Rights Act of 1964 and related statutes. To request additional information on RTC's Title VI nondiscrimination requirements, or if any person believes they have been aggrieved by an unlawful discriminatory practice under Title VI or other applicable law and would like to file a complaint, contact RTC at 564-397-6067 (TTY 711) or email TitleVI@rtc.wa.gov.

Persons who do not speak or read English well may request language assistance, oral interpretation and/or written translation, at no cost. Contact RTC at 564-397-6067 (TTY 711) or email info@rtc.wa.gov.

American with Disabilities Act (ADA) Information

Individuals requiring reasonable accommodations may request written materials in alternate formats, sign language interpreters, physical accessibility accommodations, or other reasonable accommodations by contacting RTC at 564-397-6067 (TTY 711) or email info@rtc.wa.gov, with two days advance notice.

Aviso del Título VI

RTC opera sus programas sin considerar raza, color y origen nacional, de acuerdo con las leyes aplicables, incluyendo el Título VI de la Ley de Derechos Civiles de 1964 y los estatutos relacionados. Para solicitar información adicional de los requisitos de no discriminación de RTC Título VI, o si cualquier persona cree que ha sido perjudicada por una práctica discriminatoria ilegal bajo el Título VI u otra ley aplicable y desearía presentar una reclamación, comuníquese con RTC al 564-397-6067 (TTY 711) o por correo electrónico a TitleVI@rtc.wa.gov.

Las personas que no hablan o leen inglés bien pueden solicitar asistencia con el idioma, interpretación oral y/o traducción escrita, sin costo alguno. Comuníquese con RTC al 564-397-6067 (TTY 711) o por correo electrónico a info@rtc.wa.gov.

Información sobre la Ley de Estadounidenses con Discapacidades (ADA)

Las personas que requieran adaptaciones razonables pueden solicitar materiales escritos en formatos alternos, intérpretes de lenguaje de señas, adaptaciones de accesibilidad física, u otras adaptaciones

razonables poniéndose en contacto con RTC al 564-397-6067 (TTY 711), o por correo electrónico a info@rtc.wa.gov con dos días de antelación.

Раздел VI Уведомление

RTC предоставляет участие в своих программах независимо от расы, цвета кожи и национального происхождения, в соответствии с применимыми законами, включая раздел VI Закона о гражданских правах 1964 года и связанные с ним законодательные акты. Чтобы запросить дополнительную информацию о требованиях RTC по разделу VI о запрете дискриминации, или подать жалобу, если какое-либо лицо считает, что оно пострадало от незаконной дискриминационной практики, запрещённой разделом VI или другим применимым законодательством, свяжитесь с RTC по телефону 564-397-6067 (TTY 711) или электронной почте TitleVI@rtc.wa.gov.

Лица, которые плохо говорят или читают по-английски, могут бесплатно запросить помощь устного и письменного переводчика. Позвоните в RTC 564-397-6067 (TTY 711) или отправьте сообщение по эл. почте на адрес info@rtc.wa.gov.

Информация об американцах с ограниченными возможностями (ADA)

Лица, которым требуются разумные услуги, могут запросить письменные материалы в альтернативных форматах, услуги сурдопереводчиков, приспособления для обеспечения физической доступности и другие разумные услуги, связавшись с RTC по телефону 564-397-6067 (TTY 711) с предварительным уведомлением за 2 дня.

第六章通知

根据适用法律（包括 1964 年《民权法案》第六章和相关法规，RTC 不以种族、肤色和国籍为由拒绝您参加其运营的项目。如需索取有关 RTC 第六章非歧视要求的进一步信息，或者如果任何人认为其因第六章或其他适用法律下的非法歧视行为而受到侵害并希望提交申诉，请致电 RTC 564-397-6067（文字电话 711）联系我们或发送电子邮件至 TitleVI@rtc.wa.gov。

英语不佳人士可以免费请求语言帮助、口译和/或书面翻译。请致电 564-397-6067（文字电话 711）或发送电子邮件至 info@rtc.wa.gov 联系 RTC。

美国残疾人法案 (ADA) 信息

需要合理设施的个人可以致电 564-397-6067 (文字电话 711) 联系 RTC，请求书面材料的替代格式、手语翻译、无障碍设施或其他合理设施，并提前两天通知。

Thông báo Tiêu đề VI

RTC điều hành các chương trình của mình mà không phân biệt chủng tộc, màu da và nguồn gốc quốc gia theo luật hiện hành, bao gồm cả Đề Mục VI của Đạo Luật Dân Quyền năm 1964 và các luật có liên quan. Để yêu cầu thông tin bổ sung về các quy định không phân biệt đối xử theo Đề Mục VI của RTC hoặc nếu bất kỳ người nào cho rằng mình bị ngược đãi bởi hành vi phân biệt đối xử trái pháp luật theo Đề Mục VI hoặc luật hiện hành khác và muốn nộp đơn than phiền, hãy liên hệ với RTC theo số 564-397-6067 (TTY 711) hoặc email TitleVI@rtc.wa.gov.

Những người không nói hoặc đọc Tiếng Anh trôi chảy có thể yêu cầu dịch vụ hỗ trợ ngôn ngữ, thông dịch và/hoặc biên dịch miễn phí. Hãy liên hệ với RTC theo số 564-397-6067 (TTY 711) hoặc email info@rtc.wa.gov.

Thông tin về Đạo luật Người khuyết tật Hoa Kỳ (ADA)

Những cá nhân cần hình thức hỗ trợ hợp lý có thể yêu cầu nhận các văn bản tài liệu ở các định dạng thay thế, dịch vụ thông dịch ngôn ngữ ký hiệu, hình thức hỗ trợ tiếp cận vật lý hoặc các hình thức hỗ trợ hợp lý khác bằng cách liên hệ với RTC theo số 564-397-6067 (TTY 711), kèm theo thông báo trước hai ngày.

Table of Contents

| | |
|-------------------------------------|----|
| Introduction..... | 11 |
| Definitions | 13 |
| Objectives | 14 |
| Census Data and GIS..... | 15 |
| Regional Profile Data Tables..... | 15 |
| Funding Distribution | 20 |
| Map Profiles..... | 22 |
| Equity Focus Areas..... | 32 |
| Demographic Profile Data Notes..... | 37 |

List of Tables and Maps

| | |
|------------------------------------------------------------------------------------------------|----|
| Figure 1 - RTC Planning Area..... | 13 |
| Table 1 - Population by Race and Ethnicity - 2020 | 16 |
| Table 2 - People with Lower Incomes, 2022 | 16 |
| Table 3 - People with Lower Incomes by Race and Ethnicity, 2022 | 17 |
| Table 4 - Median Household Income by Race and Ethnicity, 2022 | 17 |
| Table 5 - Population Age 65 and Over, 2022 | 18 |
| Table 6 - People with Disabilities, 2022 | 18 |
| Table 7 - Households with No Vehicle, 2022 | 18 |
| Table 8: Clark County - Speak English Less Than “Very Well”, 2022 | 19 |
| Table 9: Klickitat County - Speak English Less Than “Very Well”, 2022..... | 19 |
| Table 10: Skamania County -Speak English Less Than “Very Well”, 2022..... | 20 |
| Table 11: Federal Funding Distributed by People of Color – Total RTP Area | 21 |
| Table 12: Federal Funding Distributed by People of Color– MPO Area | 21 |
| Table 13: Federal Funding Distributed by People of Color – Klickitat and Skamania counties.... | 21 |
| Table 14 - Equity Focus Area Thresholds | 32 |
| Map 1: People of Color Population, Clark County, 2020 | 23 |
| Map 2: People with Lower Incomes, Clark County, 2022..... | 24 |
| Map 3: Limited English Proficiency, Clark County, 2022 | 25 |
| Map 4: People of Color Population, Klickitat County, 2020 | 26 |
| Map 5: People with Lower Incomes, Klickitat County, 2022 | 27 |
| Map 6: Limited English Proficiency, Klickitat County, 2022..... | 28 |
| Map 7: People of Color Population, Skamania County, 2020..... | 29 |

| | |
|-----------------------------------------------------------------|----|
| Map 8: People with Lower Incomes, Skamania County, 2022 | 30 |
| Map 9: Limited English Proficiency, Skamania County, 2022 | 31 |
| Map 10: Equity Focus Areas Clark County | 34 |
| Map 11: Equity Focus Areas, Klickitat County | 35 |
| Map 12: Equity Focus Areas, Skamania County..... | 36 |

Demographic Profile: Clark, Klickitat, and Skamania Counties

Introduction

Since the mid-1990s, a renewed emphasis on environmental justice has become an integral part of the transportation planning process for urban regions in the United States. The concept of “environmental justice” is derived from Title VI of the Civil Rights Act of 1964¹ and other civil rights statutes and was first put forth as a national policy goal by presidential Executive Order 12898, issued in 1994, which directs “each federal agency to make achieving environmental justice part of its mission by identifying and addressing, as appropriate, disproportionately high and adverse human health or environmental effects of its programs, policies, and activities on minority populations and lower-income populations.”²

The U.S. Department of Transportation (DOT) responded to the directive with its DOT Order to Address Environmental Justice in Minority Populations and Lower-Income Populations in 1997³. The order laid out the following environmental justice principles to be integrated into federal transportation programs, policies, and activities:

- To avoid, minimize, or mitigate disproportionately high and adverse human health and environmental effects, including social and economic effects, on minority and lower-income populations.
- To ensure the full and fair participation by all potentially affected communities in the transportation decision-making process.

¹ “Title VI of the Civil Rights Act of 1964 states that “no person in the United States shall, on the ground of race, color, or national origin, be excluded from participation in, be denied the benefits of, or be subjected to discrimination under any program or activity receiving Federal financial assistance.”

² Executive Order 12898, Federal Actions to Address Environmental Justice in Minority Populations and Low-Income Populations, February 1994.

³ DOT Order to Address Environmental Justice in Minority Populations and Low-Income Populations, April 1997.

- To prevent the denial of, reduction in, or significant delay in the receipt of benefits by people of color and people with lower incomes.

The DOT has issued an updated internal Order in May 2012. DOT Order 5610(a) continues to be a key component of the Department's strategy to promote the principles of environmental justice in all Departmental programs, policies, and activities.

With this guidance the Federal Highway Administration (FHWA) and Federal Transit Administration (FTA) renewed their commitments to ensure that environmental justice is carried out in the programs and strategies they fund, including the activities of metropolitan planning organizations (MPOs).⁴ The FHWA has specifically directed MPOs to:

- Enhance their analytical capabilities to ensure that their long-range transportation plan and their transportation improvement program comply with Title VI.
- Identify residential, employment, and transportation patterns of people with lower incomes and people of color so that their needs can be identified and addressed and the benefits and burdens of transportation investments can be fairly distributed.
- Evaluate and, where necessary, improve their public involvement processes to eliminate participation barriers and engage people of color and people with lower incomes in transportation decision-making.

The Southwest Washington Regional Transportation Council (RTC) is the federally designated MPO for Clark County, Washington, as well as the state designated regional transportation planning organization (RTPO) for the counties Clark, Klickitat, and Skamania, Washington.

Under these mandates RTC is responsible for developing and regularly updating the region's long-range transportation plan, as well as distributing federal transportation funds to local projects through its transportation improvement program.

⁴ FHWA Actions to Address Environmental Justice in Minority Populations and Lower-Income Populations, December 1998; and FHWA and FTA Memorandum Implementing Title VI Requirements in Metropolitan and Statewide Planning, October 1999

This document contains a baseline profile of key demographic data for the region and identifies population groups and communities to be considered in environmental justice analyses and activities.

Figure 1 - RTC Planning Area



Definitions

Executive Order 12898 and the DOT, FHWA, and FTA orders on environmental justice address persons belonging to any of the following groups:

People of Color

- Black - a person having origins in any of the Black racial groups of Africa.
- American Indian and Alaskan Native - a person having origins in any of the original people of North America and who maintains cultural identification through tribal affiliation or community recognition.
- Asian - a person having origins in any of the original peoples of the Far East, Southeast Asia, or the Indian subcontinent.
- Native Hawaiian and Other Pacific Islander – a person having origins in any of the original peoples of Hawaii, Guam, Samoa, or other Pacific Islands.

- Hispanic - a person of Mexican, Puerto Rican, Cuban, Central or South American, or other Spanish culture or origin, regardless of race.

People with Lower Incomes

- A person whose household income (or in the case of a community or group, whose median household income) is at or below the U.S. Department of Health and Human Services (HHS) poverty guidelines. States and localities may, however, adopt a higher threshold for lower-income as long as the higher threshold is not selectively implemented and is inclusive of all persons at or below the HHS poverty guidelines.

Other Title VI Protected Populations

- While the various orders on environmental justice require consideration of only people of color and people with lower incomes as defined above, discussions of other populations protected by Title VI and related nondiscrimination statutes—such as the elderly, those with disabilities, etc.—are encouraged in addressing environmental justice and Title VI in federally sponsored transportation programs, policies, and activities and are, therefore, included in this profile.
- Limited English Proficiency (LEP) - Executive Order 13166: Improving Access to Service for Persons with Limited English Proficiency, clarified the Title VI of the Civil Rights Act of 1964 with regard to accessibility of federal programs and services to persons who are not proficient in the English language. This executive order stated that individuals who do not speak, read, write, or understand English well are entitled to language assistance under Title VI of the Civil Rights Act of 1964 with respect to a particular type of service, benefit, or encounter. LEP populations are included in this profile.

Objectives

RTC set out to meet two primary objectives in preparing this environmental justice demographic profile:

- Compile key demographic data on people of color and people with lower incomes, as well as other populations of interest, for environmental justice consideration in conducting regional transportation planning and program activities and public outreach.

- Identify the locations of communities within the region with significant people of color and people with lower incomes in order to facilitate and enhance environmental justice analyses and activities.

Census Data and GIS

RTC relied upon data products from the 2018-2022 American Community Survey 5-Year Estimates and 2020 Decennial Census to provide the most up-to-date demographic data. Geographic information systems (GIS) applications were also utilized to map graphic representations of the data. While data from the 2022 U.S. Census and American Community Survey is several years old, it continues to be the most comprehensive, reliable, and geographically detailed source of demographic information currently available.

Regional Profile Data Tables

Drawing from the U.S. Census data, RTC compiled data tables of key demographic statistics on the region’s people of color and people with lower incomes and other populations and characteristics of interest for environmental justice consideration. The data tables report statistics for the counties of Clark, Klickitat, and Skamania, Washington, the RTPO boundary.

Table 1 – Population by Race and Ethnicity

Table 2 – People with Lower Incomes

Table 3 – People with Lower Incomes by Race and Ethnicity

Table 4 – Median Household Income by Race and Ethnicity

Table 5 – Population Age 65 and Over

Table 6 – People with Disabilities

Table 7 – Households with No Vehicle

Table 8 – Clark County - Speak English Less Than “Very Well”

Table 9 – Klickitat County - Speak English Less Than “Very Well”

Table 10 – Skamania County - Speak English Less Than “Very Well”

Observations

Tables 1 and 2 provide essential statistics on the region’s people of color and people with lower incomes. People of color—or non-White persons, including White persons of Hispanic/Latino origin—comprised 18.1% of the region’s total population in 2020. Blacks/African Americans constitute

2.3% of the region's total population; American Indians/Alaskan Natives, 1.0%; Asians/Pacific Islanders, 5.9%; and Hispanics/Latinos, 11.7%.

Table 1 - Population by Race and Ethnicity - 2020

| | Clark | Klickitat | Skamania |
|-----------------------------------------|-------|-----------|----------|
| Non-Hispanic, White Alone | 72.9% | 78% | 83.6% |
| Black or African American | 2.3% | 0.3% | 0.6% |
| American Indian/Alaska Native | 1.0% | 2.4% | 1.6% |
| Asian/Pacific Islander | 5.9% | 0.8% | 1.3% |
| Other race or two or more races | 15.4% | 16.1% | 10.9% |
| Hispanic or Latino (of any race) | 11.7% | 12.8% | 6.4% |
| Total People of Color | 27.1% | 22% | 16.4% |

Source: 2020 Decennial Census

In 2022 the regionwide *people with lower incomes* rate was 8.9% for Clark County, 13.8% for Klickitat County, and 8.6% for Skamania County. Table 2 also reports statistics for the percentage of the region's population below 150% and 200% of the federal poverty level in 2022. These statistics indicate that there are substantial numbers of families and individuals in the region whose incomes are above the federal poverty level but within a range that may still be considered lower income, particularly when taking into account the cost of living in the Vancouver/Portland metropolitan region.

Table 2 - People with Lower Incomes, 2022

| | Clark | Klickitat | Skamania |
|---------------------------------|---------|-----------|----------|
| Below 100% Poverty Level | 44,315 | 3,132 | 1,036 |
| | 8.9% | 13.8% | 8.6% |
| Below 150% Poverty Level | 72,508 | 5,414 | 2,002 |
| | 14.5% | 23.8% | 16.7% |
| Below 200% Poverty Level | 108,803 | 7,024 | 2,747 |
| | 21.8% | 30.9% | 22.9% |

Source: 2018-2022 American Community Survey 5-year Estimates – Table C17002

Tables 3 and 4 illustrate the relationship between people of color and people with lower incomes. Population of people with lower incomes are higher and median household incomes are lower for people of color populations compared to the White population or total population overall.

Table 3 - People with Lower Incomes by Race and Ethnicity, 2022

| Race and Hispanic/Latino Origin | Clark | Klickitat | Skamania |
|--------------------------------------------|-------|-----------|----------|
| White | 8.0% | 14.2% | 8.1% |
| Black or African American | 16.9% | 16.7% | 62.5% |
| American Indian and Alaska Native | 9.5% | 54.5% | 34.9% |
| Asian | 8.0% | 14.7% | 2.4% |
| Native Hawaiian and other Pacific Islander | 29.2% | - | 40.0% |
| Some Other Race | 15.2% | 5.2% | 3.4% |
| Two or More Races | 11.6% | 7.5% | 10.0% |
| White Alone, not Hispanic or Latino | 7.6% | 15.0% | 8.6% |
| Hispanic or Latino (of any race) | 14.5% | 3.6% | 2.8% |

Source: 2018-2022 American Community Survey 5-year Estimates – Table S1703

Table 4 - Median Household Income by Race and Ethnicity, 2022

| Race and Hispanic/Latino Origin | Clark | Klickitat | Skamania |
|-------------------------------------|-----------|-----------|-----------|
| White | \$91,160 | \$65,944 | \$85,279 |
| Black or African American | \$54,471 | - | - |
| American Indian and Alaska Native | \$96,250 | \$48,603 | \$15,189 |
| Asian | \$111,662 | - | 135,787 |
| Native Hawaiian/Pacific Islander | \$81,207 | - | - |
| Some Other Race | \$62,206 | \$74,464 | \$71,583 |
| Two or More Races | \$82,332 | \$79,500 | \$77,750 |
| White Alone, not Hispanic or Latino | \$92,048 | \$65,990 | \$84,395 |
| Hispanic or Latino (of any race) | \$70,191 | \$73,798 | \$113,984 |
| All Households | \$90,115 | \$66,581 | \$84,500 |

Source: 2018-2022 American Community Survey 5-year Estimates – Table S1903

Tables 5 and 6 present demographic statistics, including people with lower incomes, for the region's elderly and people with disabilities. People with disabilities are shown to have significantly higher rates of

people with lower incomes than the total population overall, whereas people with lower incomes for the elderly population are lower.

Table 5 - Population Age 65 and Over, 2022

| | Clark | Klickitat | Skamania |
|----------------------------|--------|-----------|----------|
| Age 65 and Over | 81,124 | 5,558 | 2,613 |
| | 16.1% | 24.4% | 21.6% |
| Lower Income Status | 5,423 | 519 | 183 |
| | 6.7% | 9.3% | 7.0% |

Source: 2018-2022 American Community Survey 5-year Estimates – Table S0101 and B17001

Table 6 - People with Disabilities, 2022

| | Clark | Klickitat | Skamania |
|-----------------------------------------------------|--------|-----------|----------|
| People with Disabilities | 63,000 | 3,655 | 1,548 |
| | 12.6% | 16.1% | 12.8% |
| People with Disabilities Below Poverty Level | 9,910 | 707 | 224 |
| | 2.0% | 3.1% | 1.9% |

Source: 2018-2022 American Community Survey 5-year Estimates – Tables S1810 and C18130

Table 7 shows that in Clark, Klickitat, and Skamania counties nearly 5% or more of households do not have a vehicle available.

Table 7 - Households with No Vehicle, 2022

| | Clark | Klickitat | Skamania |
|-----------------------------------|-------|-----------|----------|
| Household with no Vehicles | 8,979 | 503 | 222 |
| | 4.8% | 5.2% | 4.6% |

Source: 2018-2022 American Community Survey 5-year Estimates – Table B08201

Finally, Tables 8, 9, and 10 presents statistics on persons with limited English proficiency and common languages other than English spoken for Clark, Klickitat, and Skamania counties. This information is intended to support the development of the public outreach and involvement component of the RTC's environmental justice program.

Table 8: Clark County - Speak English Less Than “Very Well”, 2022

| Language Spoken at Home Clark County, WA | Total Persons | % of Total Population |
|---------------------------------------------|------------------|--------------------------|
| Spanish or Spanish Creole | 11,537 | 2.4% |
| Russian, Polish, or Other Slavic | 7,510 | 1.6% |
| Vietnamese | 1,929 | 0.4% |
| Chinese | 1,863 | 0.4% |
| Other non-English | 4,812 | 1.0% |
| Total LEP Population | 28,821 | 6.1% |
| Total Population (Speak English Very Well) | 446,327 | 93.9% |

Source: 2018-2022 American Community Survey 5-year Estimates – Table C16001

In Clark County (Table 8), Spanish or Spanish Creole is the most common non-English language spoken at home, accounting for almost half of the estimated 28,821 persons that speak English less than “very well.” The estimated LEP population of 28,821 represents about 6.1% of total 475,148 residents in Clark County.

Table 9: Klickitat County - Speak English Less Than “Very Well”, 2022

| Language Spoken at Home Klickitat County, WA | Total Persons | % of Total Population |
|-------------------------------------------------|------------------|--------------------------|
| Spanish or Spanish Creole | 1,028 | 4.7% |
| German or other West Germanic language | 17 | 0.1% |
| Other LEP Population | 36 | 0.2% |
| Total LEP Population | 1,064 | 4.9% |
| Total Population (Speak English Very Well) | 20,681 | 95.1% |

Source: 2018-2022 American Community Survey 5-year Estimates – Table C16001

Spanish or Spanish Creole is also the most common non-English language spoken at home in Klickitat County (Table 9). The estimated 1,028 Spanish speakers who speak English less than “very well,” represent over 96.6% of the 1,064 Klickitat residents who speak English less than “very well.” Over all about 4.9% of Klickitat County’s 21,745 persons are LEP persons.

Table 10: Skamania County -Speak English Less Than “Very Well”, 2022

| Language Spoken at Home Skamania County, WA | Total Persons | % of Total Population |
|--------------------------------------------------------|--------------------------|----------------------------------|
| Spanish or Spanish Creole | 98 | 0.8% |
| Other Asian and Pacific Island Languages | 13 | 0.1% |
| Total LEP Population | 111 | 1.0% |
| Total Population (Speak English Very Well) | 11,502 | 99.0% |

Source: 2018-2022 American Community Survey 5-year Estimates – Table C16001

In Skamania County (Table 10), Spanish or Spanish Creole is the most common non-English language spoken at home, accounting for almost all of the estimated 111 persons that speak English less than “very well.” The estimated LEP population of 111 represents about 1.0% of total 11,613 persons that reside in Skamania County.

Funding Distribution

Utilizing Census data and the federal funding amounts RTC has distributed since 2016 in Clark, Klickitat, and Skamania counties, an analysis was completed for identifying people of color populations and the amount of federal funding distributed to those areas. Funding programs included the Surface Transportation Block Grant (STBG) Program, Congestion Mitigation and (CMAQ) Air Quality Improvement Program, Transportation Alternatives (TA) Program, and the Carbon Reduction (CRP) Program. RTC is responsible for the distribution of STBG, CMAQ, TA, and CRP funds for Clark County and TA funds for Clark, Klickitat, and Skamania counties.

Table 11 shows the amount of federal funding distributed to areas of people of color for the RTC RTPO area that includes Clark, Klickitat, and Skamania counties. Projects that covered multiple census tracts, entire counties, or the whole three-county region were included in the highest percent people of color areas that they impacted.

Table 11: Federal Funding Distributed by People of Color Population – Total RTP Area (Clark, Klickitat, Skamania counties)

| People of Color Population | Total Federal Funding | % of Total Federal Funding |
|----------------------------|-----------------------|----------------------------|
| 5% to 10% | \$332,800 | 0.4% |
| 10% to 25% | \$20,210,600 | 24.5% |
| 25% to 50% | \$50,428,670 | 61.2% |
| Greater than 50% | \$11,429,400 | 13.9% |
| Total | \$82,401,470 | 100.0% |

Table 12 shows the amount of federal funding distributed to people of color areas for the Clark County MPO area. Projects that covered multiple census tracts, entire counties, or the whole three-county region were included in the highest percent minority area that they impacted.

Table 12: Federal Funding Distributed by People of Color Population – MPO Area (Clark County)

| People of Color Population | Total Federal Funding | % of Total Federal Funding |
|----------------------------|-----------------------|----------------------------|
| 5% to 10% | - | 0.0% |
| 10% to 25% | \$20,210,600 | 24.7% |
| 25% to 50% | \$50,254,500 | 61.4% |
| Greater than 50% | \$11,429,400 | 14.0% |
| Total | \$81,894,500 | 100.0% |

Table 13 shows the amount of federal funding distributed to people of color areas for the Klickitat and Skamania counties. Projects that covered multiple census tracts, entire counties, or the whole three-county region were included in the highest percent people of color area that they impacted.

Table 13: Federal Funding Distributed by People of Color Population – Klickitat and Skamania counties

| People of Color Population | Total Federal Funding | % of Total Federal Funding |
|----------------------------|-----------------------|----------------------------|
| 5% to 10% | \$332,800 | 65.6% |
| 10% to 25% | - | 0.0% |
| 25% to 50% | \$174,170 | 34.4% |
| Greater than 50% | - | 0.0% |
| Total | \$506,970 | 100.0% |

Analysis of the distribution of RTC funding shows that for the RTPPO area that includes Clark, Klickitat, and Skamania counties 99.6% of the funding since 2016 went to areas with 10% or more of people of color. In areas where 25% or more of the population are people of color, the percentage was 75.1%. For Clark County the percentage was 100% for areas with 10% or more of people of color and 75.4% for areas with 25% or more of populations that are people of color. For Klickitat and Skamania counties, it was 34.4% with populations of at least 25% or more of people of color and 65.6% in areas with 5% to 10% of people of color.

Map Profiles

In addition to compiling the regional profile data tables described above, RTC utilized its geographic information systems (GIS) applications to map the distributions of people of color and people with lower incomes across the region to identify geographic areas and communities with substantial people of color, people with lower incomes, and people with Limited English Proficiency in Clark, Klickitat, and Skamania counties.

Map 1 – People of Color Population, Clark County, 2020

Map 2 – People with Lower Incomes, Clark County, 2022

Map 3 – Limited English Proficiency, Clark County, 2022

Map 4 – People of Color Population, Klickitat County, 2020

Map 5 – People with Lower Incomes, Klickitat County, 2022

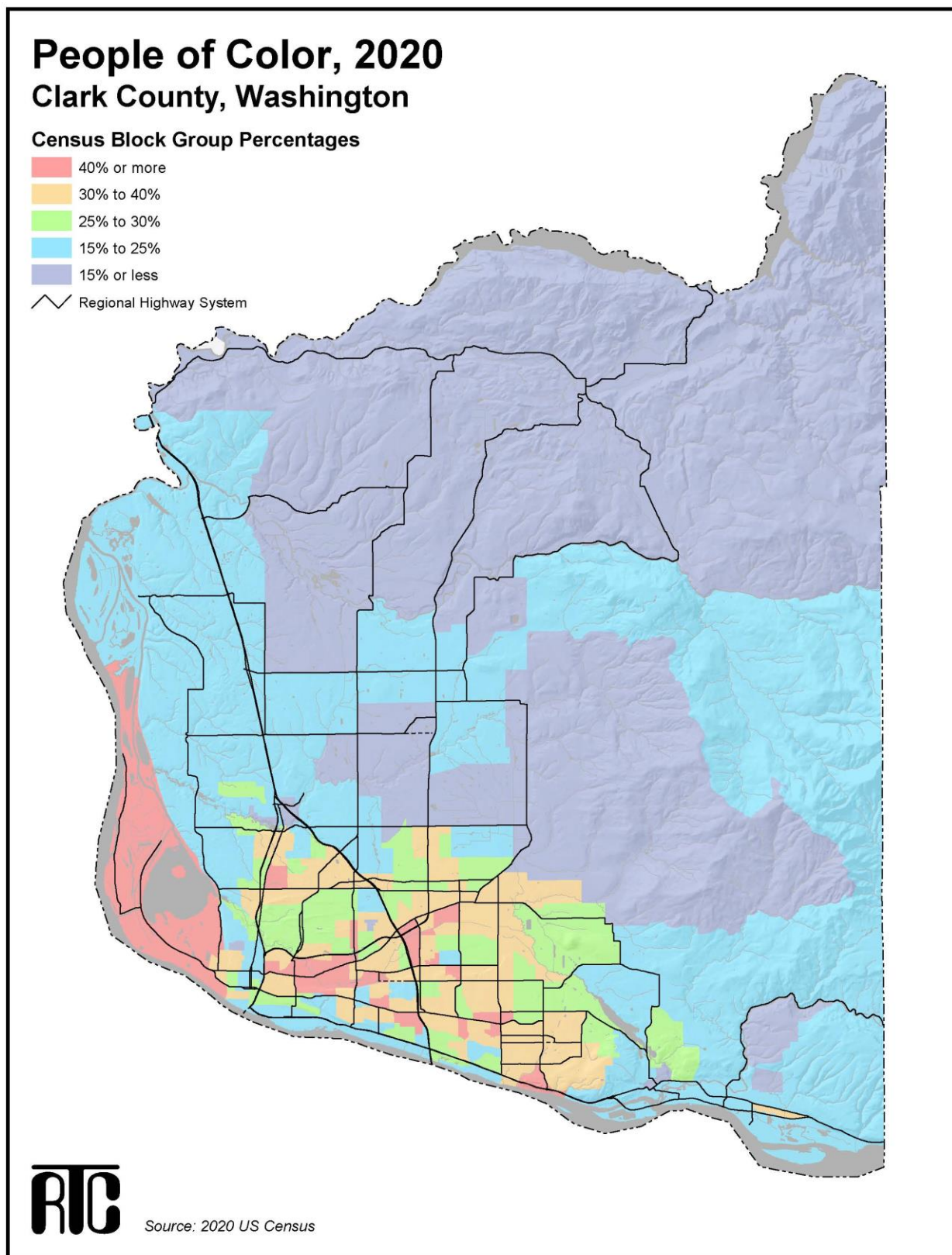
Map 6 – Limited English Proficiency, Klickitat County, 2022

Map 7 – People of Color Population, Skamania County, 2020

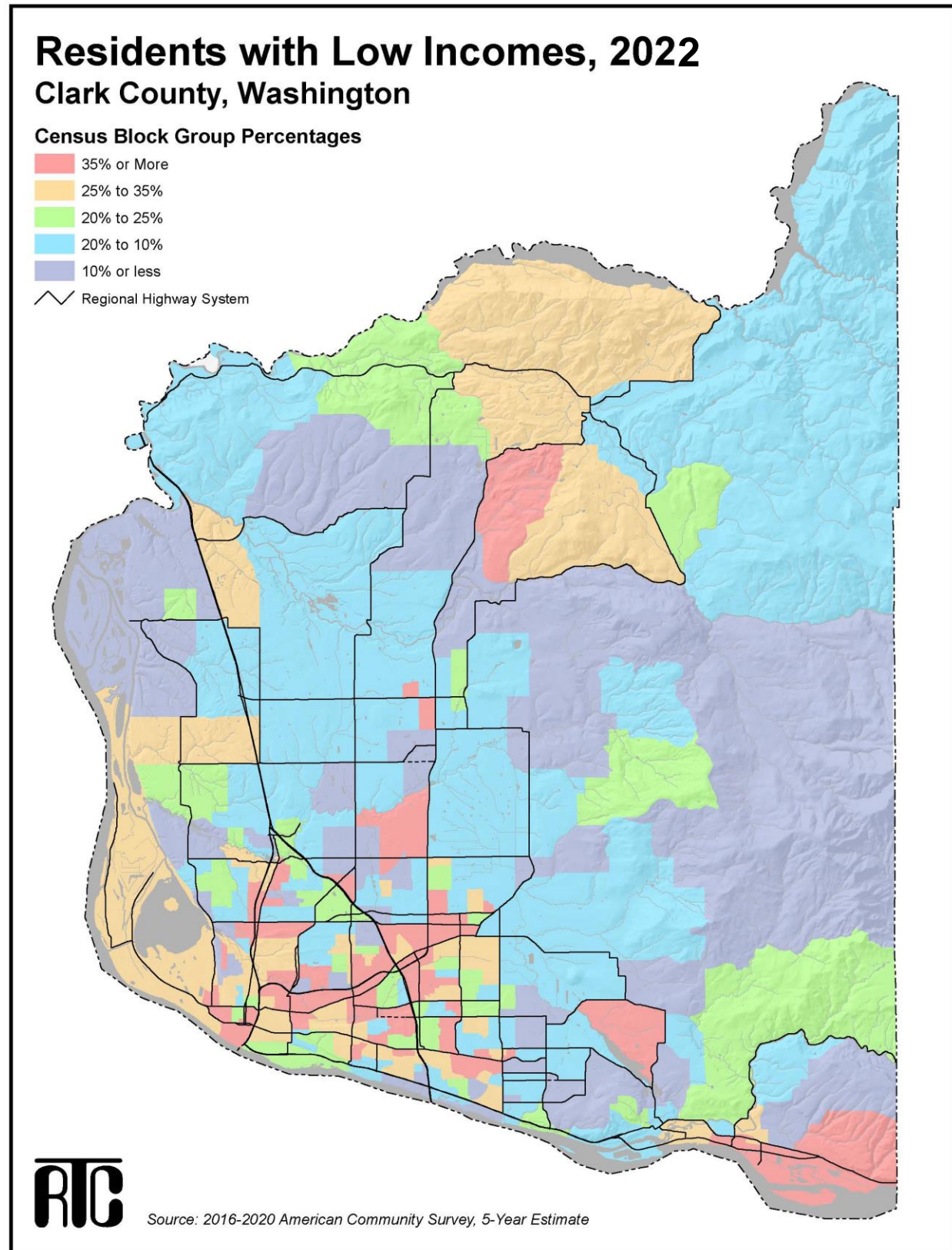
Map 8 – People with Lower Incomes, Skamania County, 2022

Map 9 – Limited English Proficiency, Skamania County, 2022

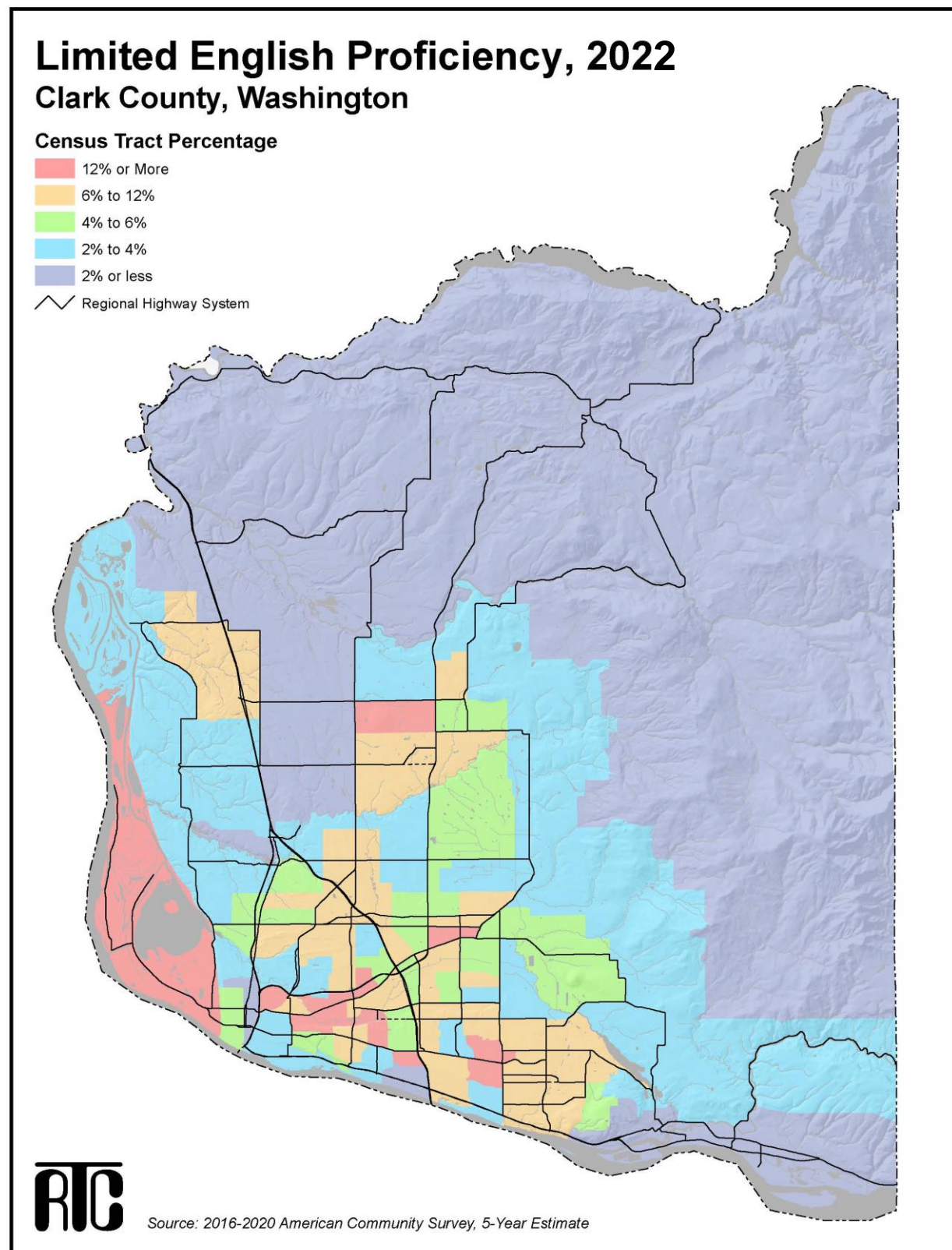
Map 1: People of Color Population, Clark County, 2020



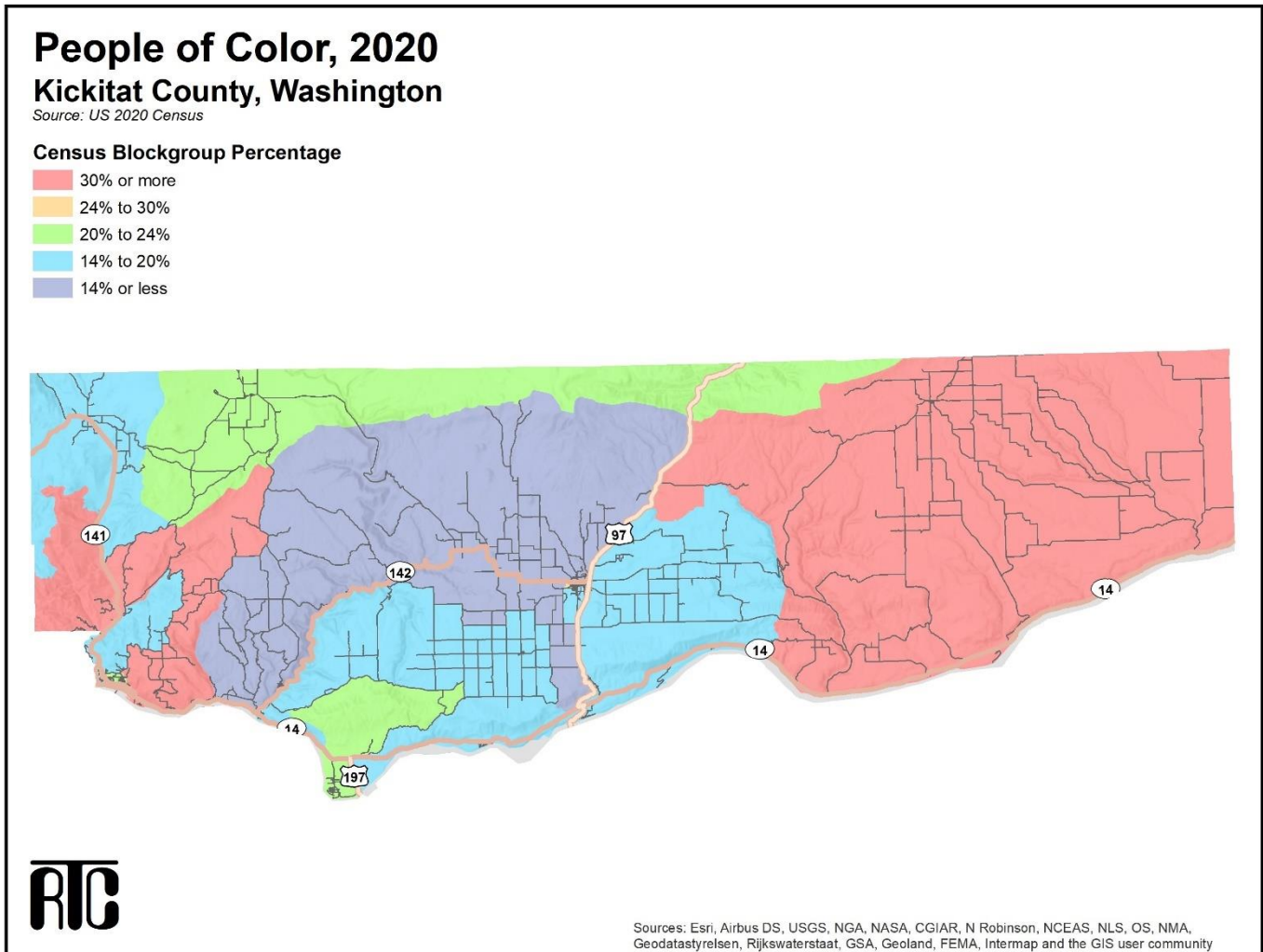
Map 2: People with Lower Incomes, Clark County, 2022



Map 3: Limited English Proficiency, Clark County, 2022



Map 4: People of Color Population, Klickitat County, 2020



Map 5: People with Lower Incomes, Klickitat County, 2022

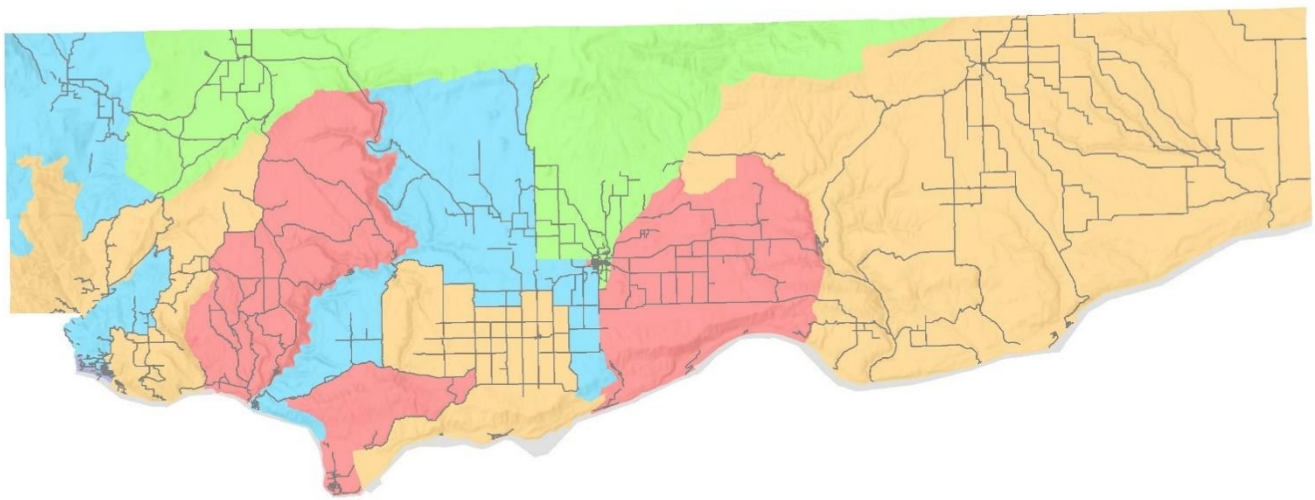
Residents with Low Income, 2022

Klickitat County, Washington

Source: 2016-2020 American Community Survey, 5-Year Estimate

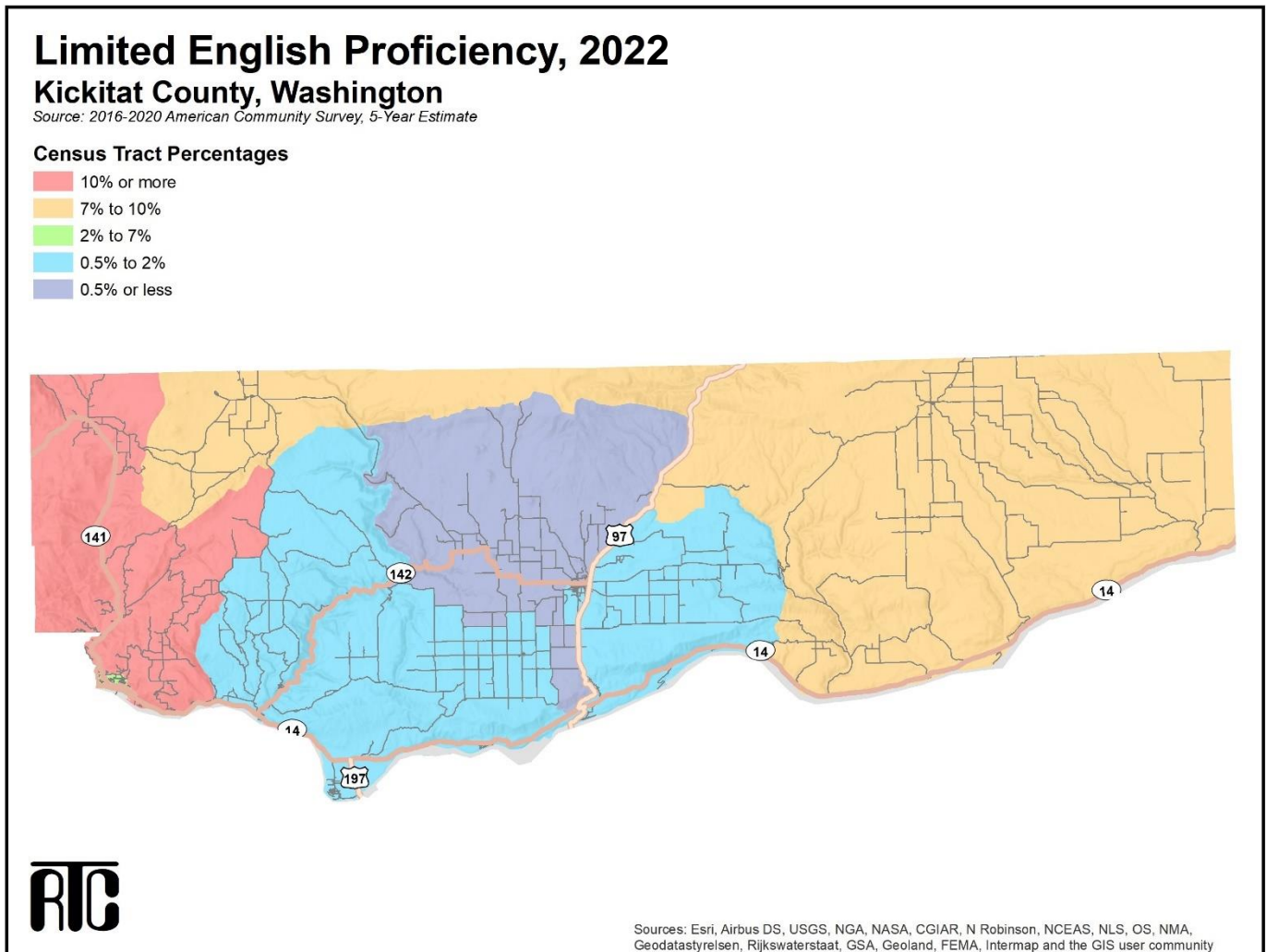
Census Blockgroup Percentage

- 49% or more
- 39% to 49%
- 33% to 39%
- 23% to 33%
- 23% or less

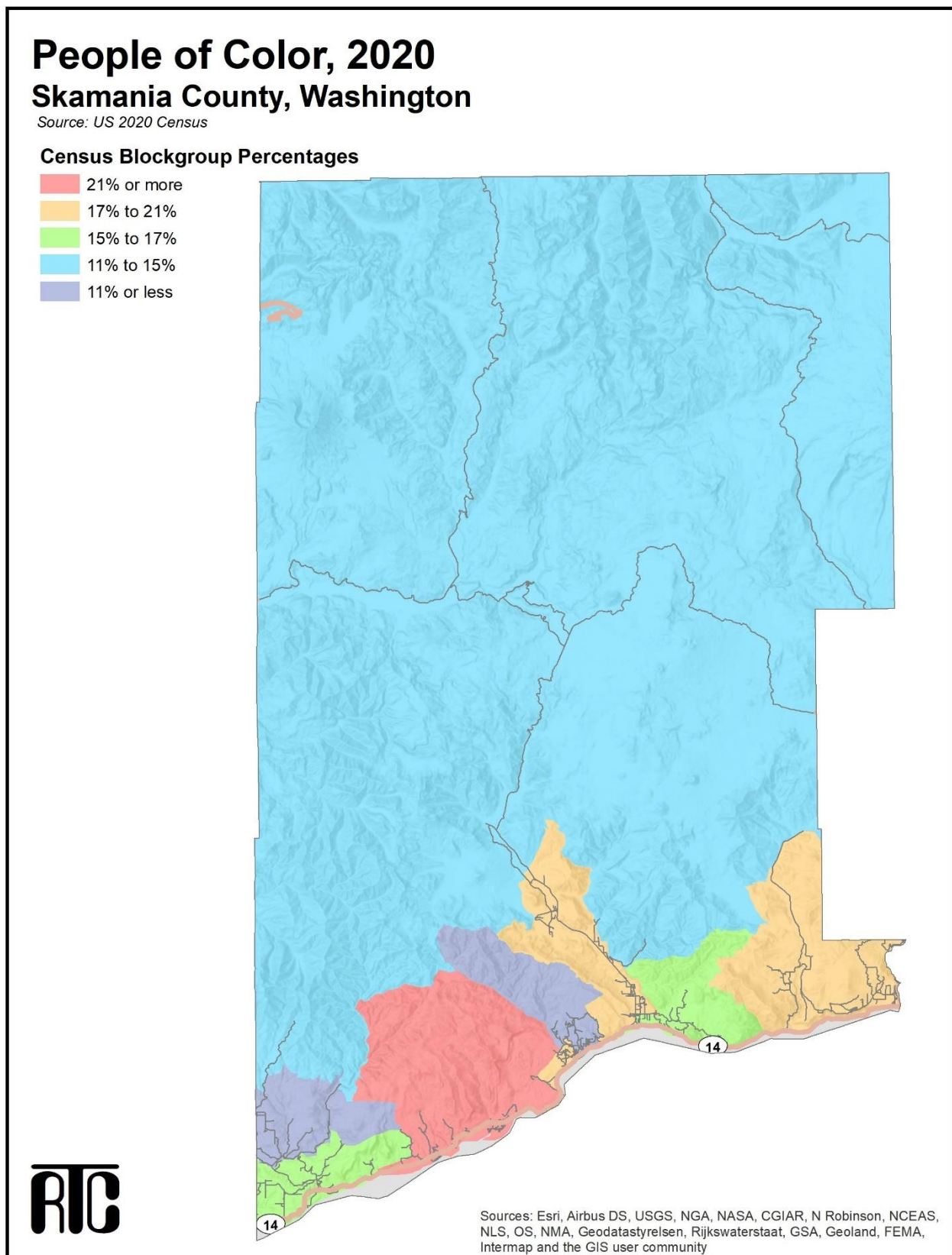


Sources: Esri, Airbus DS, USGS, NGA, NASA, CGIAR, N Robinson, NCEAS, NLS, OS, NMA, Geodastyrelsen, Rijkswaterstaat, GSA, Geoland, FEMA, Intermap and the GIS user community

Map 6: Limited English Proficiency, Klickitat County, 2022



Map 7: People of Color Population, Skamania County, 2020



Map 8: People with Lower Incomes, Skamania County, 2022

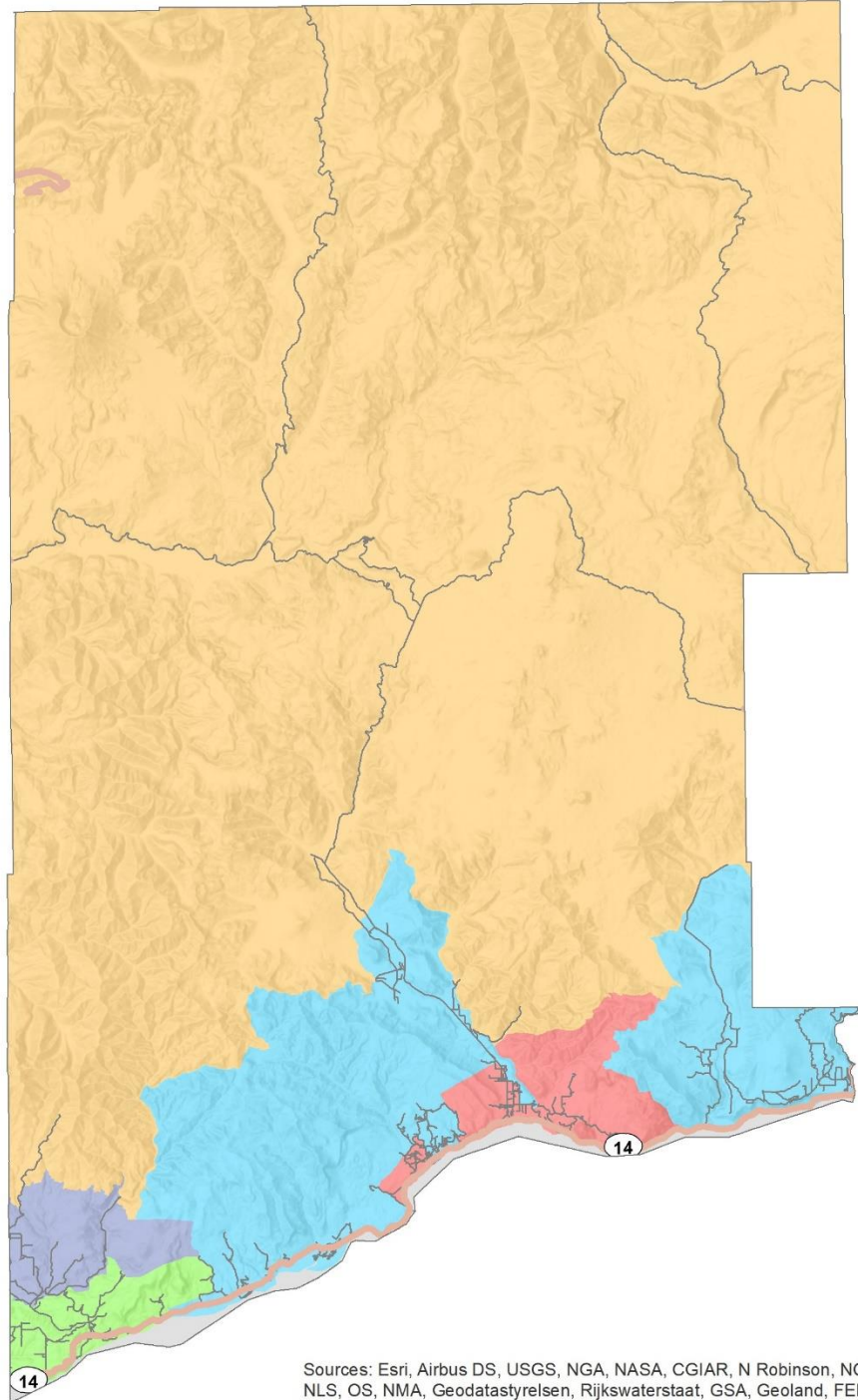
Residents with Low Incomes, 2022

Skamania County, Washington

Source: 2016 - 2020 American Community Survey

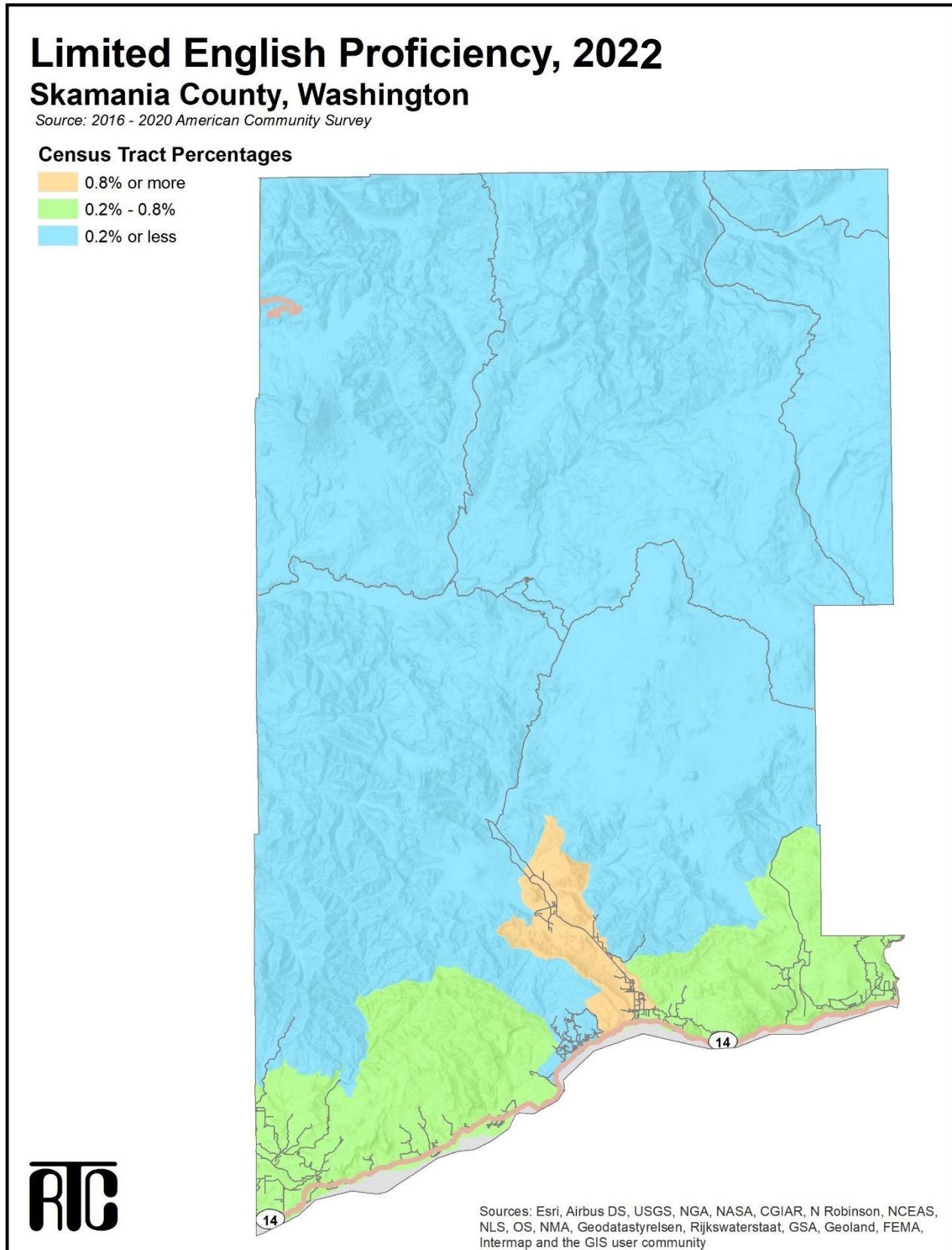
Census Blockgroup Percentages

- 38% or more
- 28% to 28%
- 24% to 28%
- 14% to 24%
- 14% or less



Sources: Esri, Airbus DS, USGS, NGA, NASA, CGIAR, N Robinson, NCEAS, NLS, OS, NMA, Geodatastyrelsen, Rijkswaterstaat, GSA, Geoland, FEMA, Intermap and the GIS user community

Map 9: Limited English Proficiency, Skamania County, 2022



Equity Focus Areas

For RTC's 2024 Regional Transportation Plan (RTP) process, demographic data was used to map overlapping areas to identify the locations of communities within Clark, Klickitat, and Skamania counties that have significant populations of people of color, people with lower incomes, and people with limited English proficiency to help facilitate and enhance RTC's environmental justice analyses and activities.

RTC's goal is to apply a wholistic equity lens to its planning practices to address existing inequities and prevent the creation of new inequities. In support of this work, RTC's equity lens is based on the identification of Equity Focus Areas (EFA) using these populations. The equity focus areas were used in evaluating the RTP 20 year project list, is used in the TIP project evaluation process, as well as analysis for planning and study projects.

Equity Focus Areas are census block groups or tracts with higher than the Clark County average concentrations and double the density for the following populations: of people of color (block group), people with low incomes (block group) and people with limited English proficiency (tract). Most of these areas also include higher than regional average concentrations of other marginalized communities, including youth, older adults and people living with disabilities. The threshold rates for each population are identified in the table below.

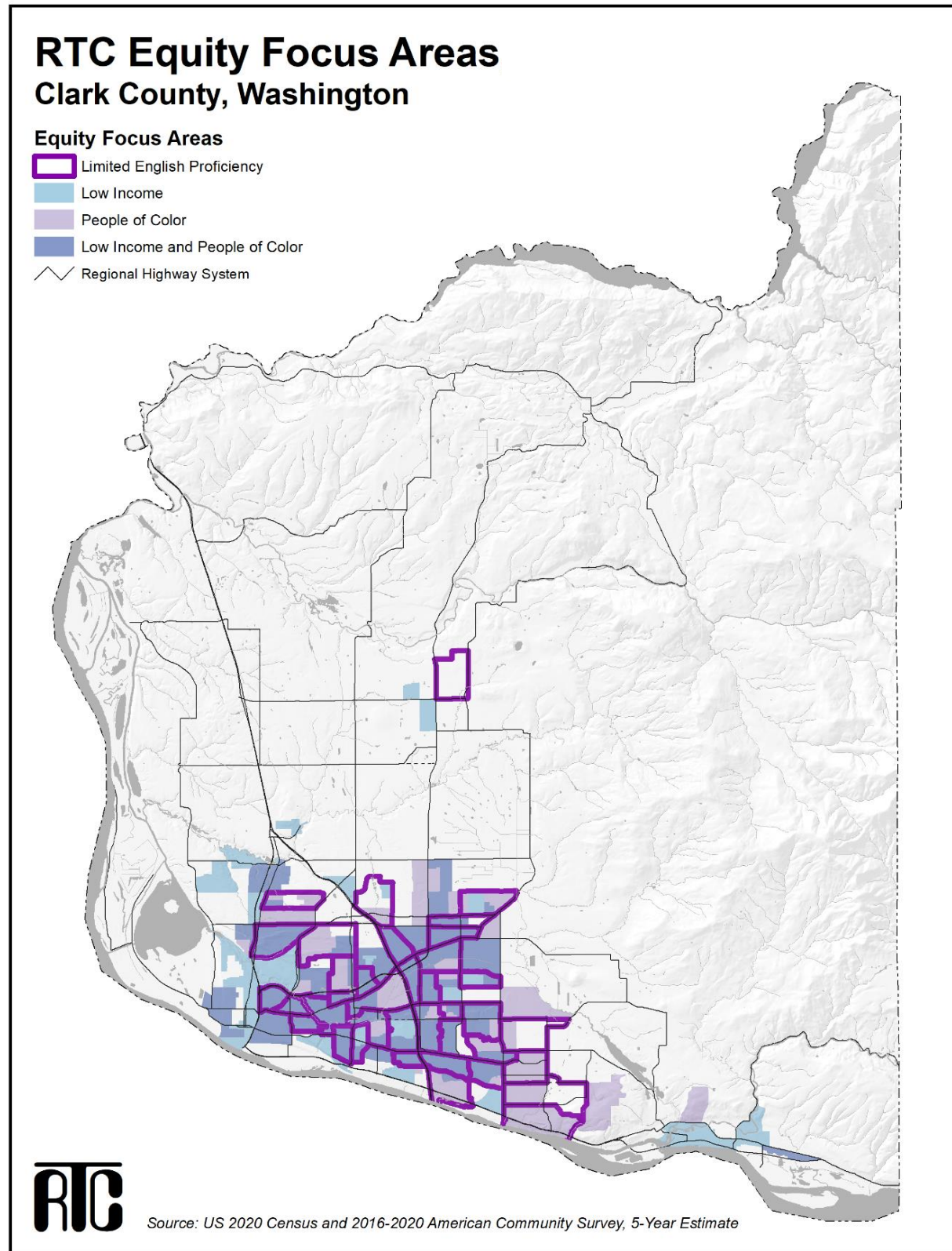
Table 14 - Equity Focus Area Thresholds

| Community | Definition | Geographic Threshold | Data Source |
|----------------------------------|----------------------------------------------------------------------------------------------------------------------------------------------------------------------------------|--------------------------------------------------------------------------------------------------------------------------------------------------------------------------------------------------|--------------------------------------|
| People of Color | Persons who identify as Hispanic or Latino, Black or African American, American Indian and Alaska Native, Asian, Native Hawaiian and Other Pacific Islander, or Some Other Race. | The census block groups that are above the Clark County rate (27.1%) for people of color AND the census block group has twice (2x) the population density of the county (1.25 persons per acre). | Decennial Census, 2020 |
| People with Lower Incomes | Persons with incomes less than 200% of the Federal Poverty Level. | The census block groups that are above the Clark County rate (22.9%) for people | American Community Survey, 2018-2022 |

| | | | |
|------------------------------------------------|--------------------------------------------------------------------------------|----------------------------------------------------------------------------------------------------------------------------------------------------------------------------------------------------------------------------------------------|--------------------------------------|
| | | with lower incomes AND the census block group has twice (2x) the population density of the county (1.19 persons per acre). | |
| People with limited English proficiency | Persons 5 years and older who identify as unable “to speak English very well.” | The census tracts that are above the Clark County rate (5.89%) for people with limited English proficiency (all languages combined) AND the census tract has twice (2x) the population density of the county average (1.12 person per acre). | American Community Survey, 2018-2022 |

Maps 10,11, and 12 illustrate the spatial distribution of equity focus areas for the Clark, Klickitat, and Skamania County regions.

Map 10: Equity Focus Areas Clark County



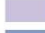



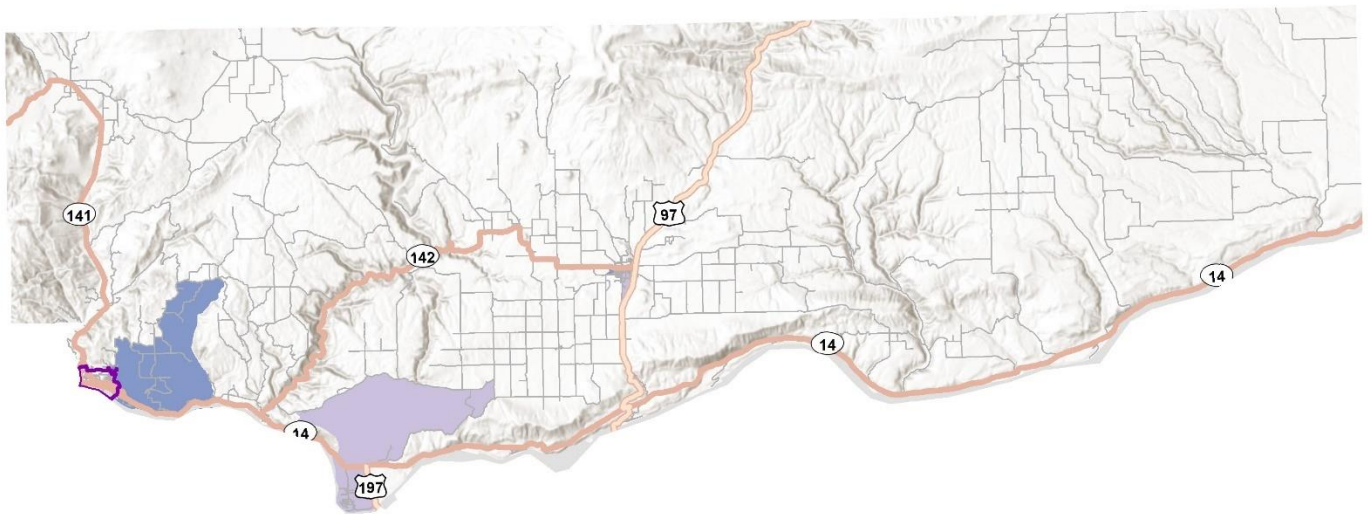
Map 11: Equity Focus Areas, Klickitat County

RTC Equity Focus Areas Klickitat County, Washington

Source: US 2020 Census and 2016-2020 American Community Survey, 5-Year Estimate

Equity Focus Areas

-  Limited English Proficiency
-  Low Income
-  People of Color
-  Low Income and People of Color







Sources: Esri, Airbus DS, USGS, NGA, NASA, CGIAR, N Robinson, NCEAS, NLS, OS, NMA, Geodatastyrelsen, Rijkswaterstaat, GSA, Geoland, FEMA, Intermap and the GIS user community

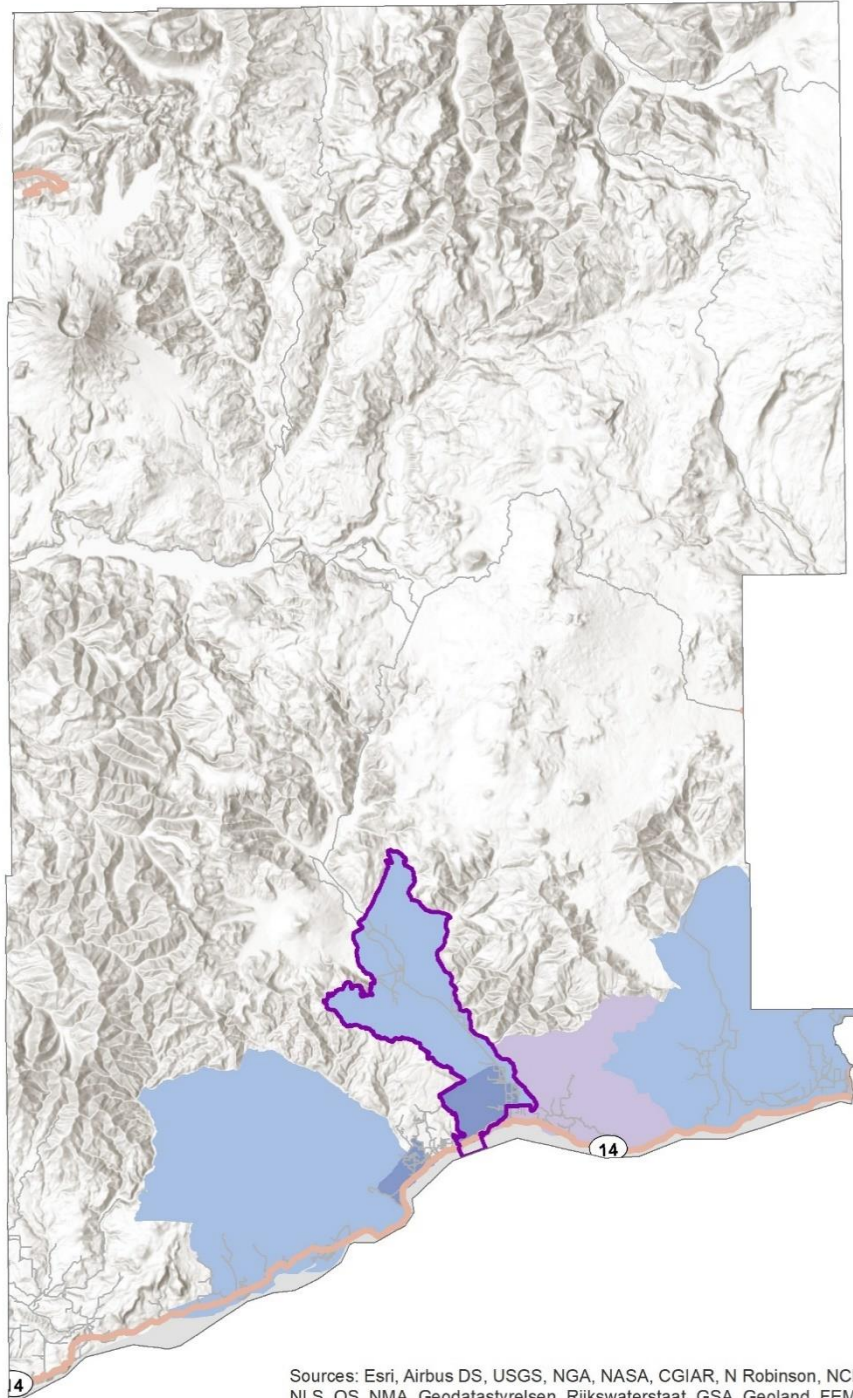
Map 12: Equity Focus Areas, Skamania County

RTC Equity Focus Areas Skamania County, Washington

Source: US 2020 Census and 2016 - 2020 American Community Survey

Equity Focus Areas

-  Limited English Proficiency
-  Low Income
-  People of Color
-  Low Inc. and People of Color



Sources: Esri, Airbus DS, USGS, NGA, NASA, CGIAR, N Robinson, NCEAS, NLS, OS, NMA, Geodatastyrelsen, Rijkswaterstaat, GSA, Geoland, FEMA, Intermap and the GIS user community

Demographic Profile Data Notes

Race – The federal race classification categories “Asian alone” and “Native Hawaiian and Other Pacific Islander alone” were combined in the regional profile data tables, where possible, as “Asian/Pacific Islander alone.” In the 2016-2020 American Community Survey 5-year Estimates, the “Some other race” category included all responses to the race question other than “White,” “Black or African American,” “American Indian and Alaskan Native,” “Asian,” or “Native Hawaiian and Other Pacific Islander.” Write-in responses such as multiracial, mixed, or interracial (where the multiple races were not identified) or a Hispanic/Latino group—such as Mexican, Puerto Rican, or Cuban—were included in the “Some other race” category. In the 2016-2020 American Community Survey 5-year Estimates, the “Two or more races” category included responses to the race question involving two or more combinations of “White,” “Black or African American,” “American Indian and Alaskan Native,” “Asian,” “Native Hawaiian and Other Pacific Islander,” and “Some other race,” including write-in responses.

Hispanic/Latino – 2018-2022 American Community Survey 5-year Estimates considered Hispanic/Latino origin as an ethnic characteristic separate from race. A person who identified their origin as Spanish, Hispanic, or Latino may be of any race, including White.

Total People of Color – The term “total people of color” represents the union between, not the sum of, people of color populations and the Hispanic/Latino population and includes White persons of Hispanic/Latino origin.

People with Lower Incomes – There are two slightly different versions of the federal poverty measure: poverty thresholds and poverty guidelines. The poverty thresholds are the original version of the federal poverty measure that was first developed by the Social Security Administration (SSA) and which has been updated each year by the Census Bureau. The poverty guidelines are a simplified version of the poverty thresholds, issued each year in the Federal Register by the Department of Health and Human Services (HHS). The 2022 poverty data reported in the regional profile tables and utilized in the GIS map profile of the region’s people with lower incomes were derived using the Census Bureau’s poverty thresholds.

People with Disabilities – In the 2018-2022 American Community Survey 5-year Estimates, disability was defined as:

- The existence of the following long-lasting conditions:
 - ❖ Sensory disability - blindness, deafness, or a severe vision or hearing impairment
 - ❖ Physical disability - a condition that substantially limits one or more basic physical activities, such as walking, climbing stairs, reaching, lifting, or carrying; or
- The existence of a physical, mental, or emotional condition lasting six (6) months or more that makes it difficult to perform the following activities:

- ❖ Mental disability - learning, remembering, or concentrating
- ❖ Self-care disability - dressing, bathing, or getting around inside the home
- ❖ Go outside home disability - going outside the home alone to shop or visit a doctor's office
- ❖ Employment disability - working at a job or business

Individuals were classified as having a disability if they belonged to the civilian noninstitutionalized population and they were 5 years and over and had a sensory, physical, mental, or self-care disability; they were 16 years and over and had a *go outside home* disability; and/or they were 16 to 64 years old and had an employment disability.

Limited English Proficiency – In the 2018-2022 American Community Survey 5-year Estimates, the English proficiency question was asked of a sample of the population who reported that they spoke a language other than, or in addition to, English at home. Respondents were asked to rate their ability to speak English in one of the following categories: “Very well,” “Well,” “Not well,” or “Not at all.” RTC classified persons as being limited English proficient if they responded with any answer other than “Very well.” Persons who spoke only English at home were assumed to be English proficient. Language proficiency was tabulated for the population age 5 and over.