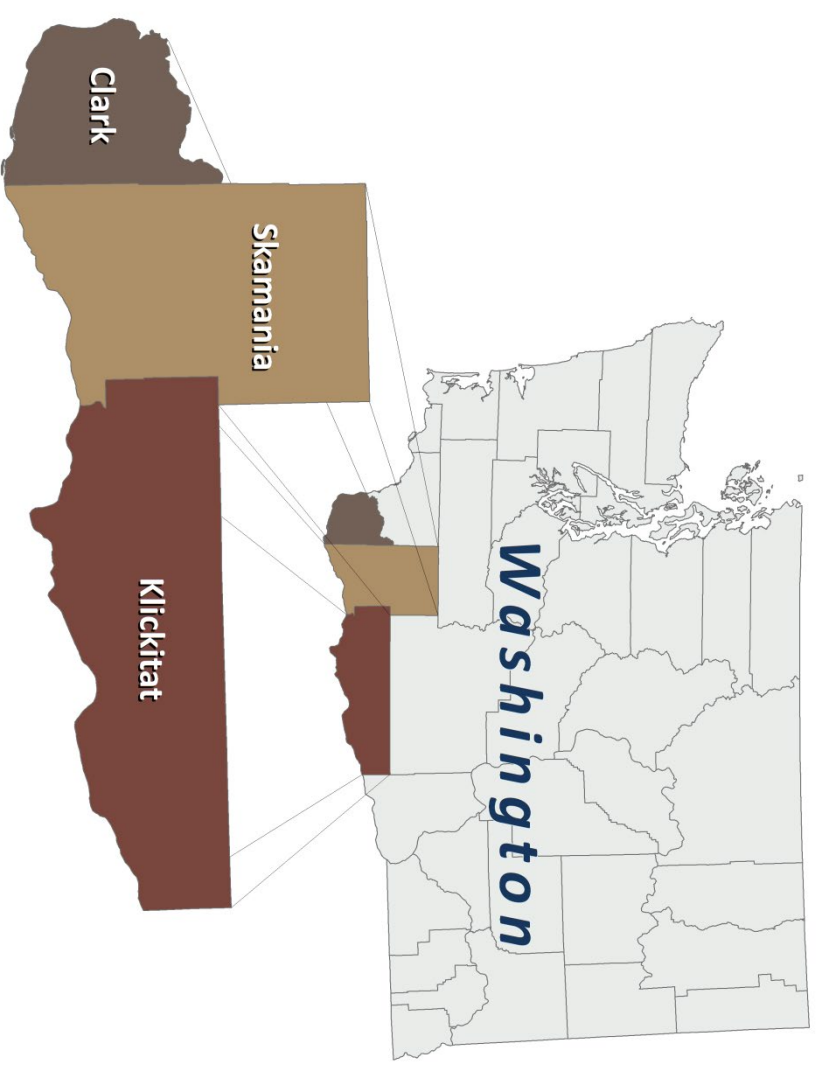


Annual Report

2019

Member Agencies



Southwest Washington Regional Transportation Council



Director's Reflection

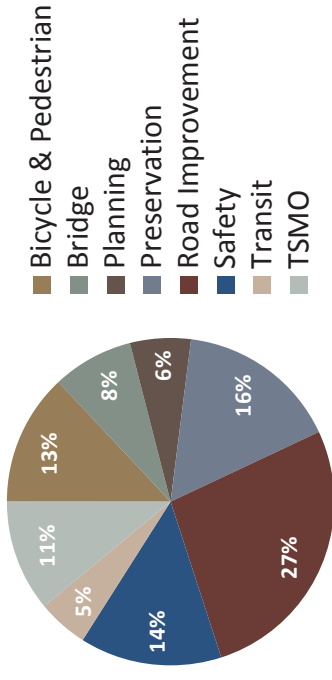
This past year the [RTC Board of Directors](#) set in motion significant plans and investments including: a 20-year Regional Transportation Plan for Clark County; awarded the agency's largest single year grant program of over \$16 million to nineteen projects; and approved a 4-year investment program for over \$340 million dollars of multi-modal transportation network investments.

2019 Grants Awards

RTC administers the largest transportation system grant program in Clark County. Over the past ten years, RTC has awarded over \$131 million in grants. 2019 marked the largest single year grant program in RTC's history. In total, RTC Board of Directors **approved \$16 million in**

4-Year Regional Investment Program

The RTC Board of Directors adopted the 2020-2023 [Transportation Improvement Program](#) in October 2019. The 4-year program anticipates **\$343.8 million in multi-modal transportation system investments** among 79 total projects. The approved investment program expenditures, by type of project, is reflected here.



regional grants to nineteen projects. These RTC grant funds will help plan and build the region's priority transportation systems. (See insert for list of 2019 grant awards.)

RTC continuously advocates for funding of regional transportation investments and finds strength in our collaboration with all twenty-four member agencies by supporting each agency's unique project planning and funding needs.

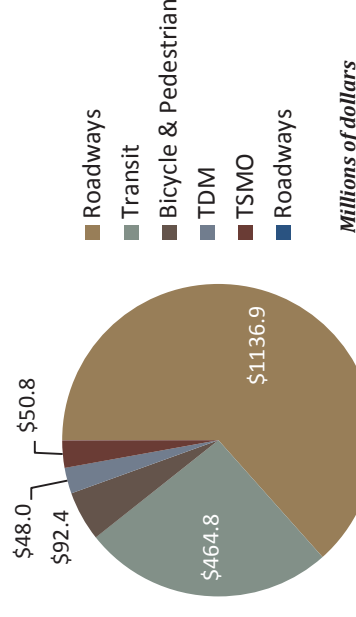
Key Regional Plans and Studies

RTC leads and participates in the development of numerous transportation system investment plans, programs, technical committees and member initiatives throughout the year. In addition to delivering recurring programs like

RTC's [traffic count database](#), [Congestion Management Process](#) and [VAST program](#), RTC completed and initiated major regional plans and studies in 2019. Highlights of key RTC activities include:

Clark County Regional Transportation Plan

The RTC Board of Directors approved an updated [20-year Regional Transportation Plan for Clark County](#) in March 2019 (Resolution 03-19-04). Over the next two decades to the year 2040, County population is projected to increase by over 30% to over 600,000; and employment is projected to grow by over 56% to over 241,000 jobs. The region's rapid growth is one challenge that RTC's regional partners have planned to address.



* Figure is exclusive of I-5 Bridge replacement project costs, which are under review and update.

Planned investments in regional transportation systems exceed \$1.7 billion.* The planned transportation system investments are truly multi-modal, and will serve the community's diverse needs well into the future.

Big Data

RTC advanced ongoing efforts to harness big data applications to provide real-time and historical traffic data for transportation planning and member agencies.

Through a study partnership with WSDOT, RTC procured a large historical data set for the [Regional Origin/Destination study](#). RTC and member agencies have been able to mine



this data for the most comprehensive databank of regional traffic origin/destination on routing. To date, this big data set has

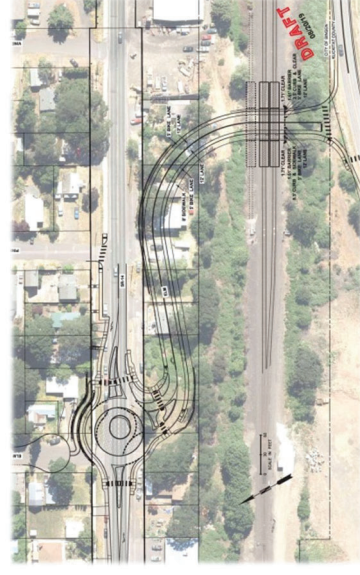
been utilized for key regional studies including: Urban Corridor Freeway Operations Study (RTC), Vancouver East

Regional Projects Moving Forward

Numerous projects moved forward from planning stages to construction. RTC member agencies celebrated many ribbon cuttings for projects that improve safety, expand multi-modal networks, and reduce congestion at key



Governors' I-5 Bridge Replacement Kick-off



SR14 / Bingen Access Project



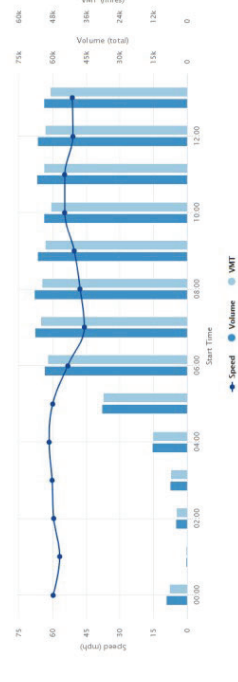
NE 10th Ave Bridge Project



LaCenter Rd / 4th St Roundabout



Port of Vancouver Multi-modal Path



Side Highway Operations Study (WSDOT), and I-5 Bridge Replacement pre-development studies (WSDOT).

Regional partners continue to advance the capabilities of the regional transportation data archive, [Portal Data Archive](#). 2019 improvements include: more real time archival and reporting of historical freeway and arterial traffic counts, speeds and travel time, as well as vehicle classification information on the freeway system. Planned improvements will publish transit ridership, on and off stop data, and on-time performance from C-TRAN working toward a multimodal transportation site for the region.



2019 Grants Awards

The following tables provide a complete listing of RTC grants awarded for priority regional transportation investments in 2019.

One-Time Bonus

Agency	Project	Phase(s)	Source	Award
Clark County	NE 99 th Street, 94 th Ave. to 117 th Ave.	RW	STBG	\$500,000
Vancouver	SE 1 st Street, 164 th Ave. to 177 th Ave.	CN	STBG / HIP	\$1,000,000
				\$1,500,000

HIP Projects

Agency	Project	Phase(s)	Source	Award
Clark County	NE 10 th Ave., 149 th St. to 154 th St.	CN	HIP	\$1,000,000
				\$1,000,000

STBG-Urban Projects

Agency	Project	Phase(s)	Source	Award
RTC	Regional Studies	PL	STBG	\$100,000
RTC	UPWP & CMP Support	PL	STBG	\$500,000
RTC	VAST/TSMO Coordination	PL	STBG	\$375,000
Battle Ground	SR-502/SR-503 Intersection	CN	STBG	\$2,000,000
Vancouver	NE 18 th Street, 97 th Ave. to 107 th Ave.	CN	STBG	\$637,500
Clark County	NE 15 th Ave., NE 179 th St. to NE 10 th Ave.	PE	STBG	\$500,000
Camas	NW 38 th Ave., Parker St. to Grass Valley Pk.	PE/RW	STBG	\$833,600
Clark County	Salmon Creek/Hazel Dell Adaptive*	CN	STBG	\$500,000
Clark County	I-5/NE 179 th St., Delfel Rd. to Union Rd.	PE	STBG	\$750,000
Vancouver	Jefferson-Kauffman Realignment	CN	STBG	\$1,840,000
				\$8,016,100

CMAQ Projects

Agency	Project	Phase(s)	Source	Award
WSDOT	SW Washington Regional Signal System	PE/CN	CMAQ	\$700,000
WSDOT	I-205 SB Ramp Meters, Padden-Mill Plain	PE/CN	CMAQ	\$2,500,000
Clark County	Salmon Creek/Hazel Dell Adaptive*	PE/CN	CMAQ	\$500,000
				\$3,700,000

TA Projects

Agency	Project	Phase(s)	Source	Award
Stevenson	1 st St. Pedestrian Amenities & Overlook	PE/CN	TA	\$575,400
Clark County	NE 68 th Street Sidewalk	CN	TA	\$1,100,000
Clark County	NE Hazel Dell Ave. Sidewalk	PE	TA	\$79,600
				\$1,755,000

*Project received both STBG and CMAQ funds.