



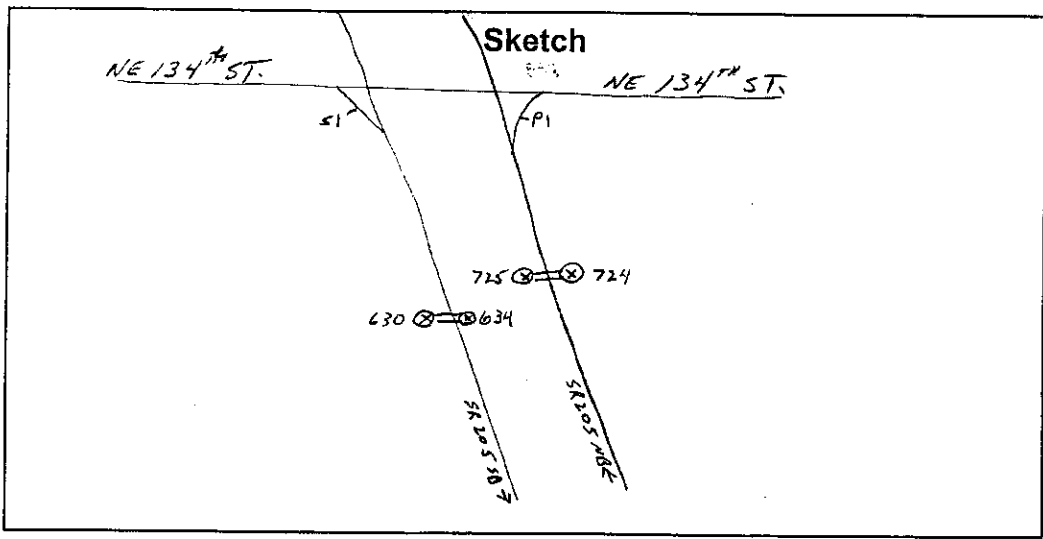
# GK Traffic Counter

Interval  60 Min.  15 Min.  
 2 Tube Classification   
 Lane No.  1  2 **LANE 1 OF 2**  
 1 Channel Tube A+B   
 2 Channel Tube A, B   
 Direction Channel A \_\_\_\_\_  
 Direction Channel B \_\_\_\_\_  
 Module No. 18670

Counter No. 630 Count ID HPMS  
 SR 205 RRT \_\_\_\_\_ MP 36.27  
 Leg 1 Direction SB OSID \_\_\_\_\_

Station Description - ON SR 205 S/O NORTHEAST 134<sup>TH</sup> ST. I/C <sup>NE</sup>

Date	Day	Time	Comments
4-28-03	2	1232	Manual A 22 B Counter A 22 B  SET CNTR OK BS/JM 6.6
4-29	3	1012	Manual A 65 B Counter A 63 B  TUBE UP 0915 - DN 0925 MISSED 8/13 MISSED 4/3 RECHK CNTR JM/BS 6.6
4-30	4	1040	Manual A 69 B Counter A 68 B  MISSED ONE SALLE CLASS NINE CHK CNTR OK JM/BS 6.6
5-1	5	0729	Manual A 102 B Counter A 102 B  CHK CNTR OK JM/BS 6.6
5-2	6	0754	Manual A _____ B Counter A _____ B  Tube up P.U. CNTR JM/BS 6.6



B. JOHNSON / J. MILLS  
Field Person



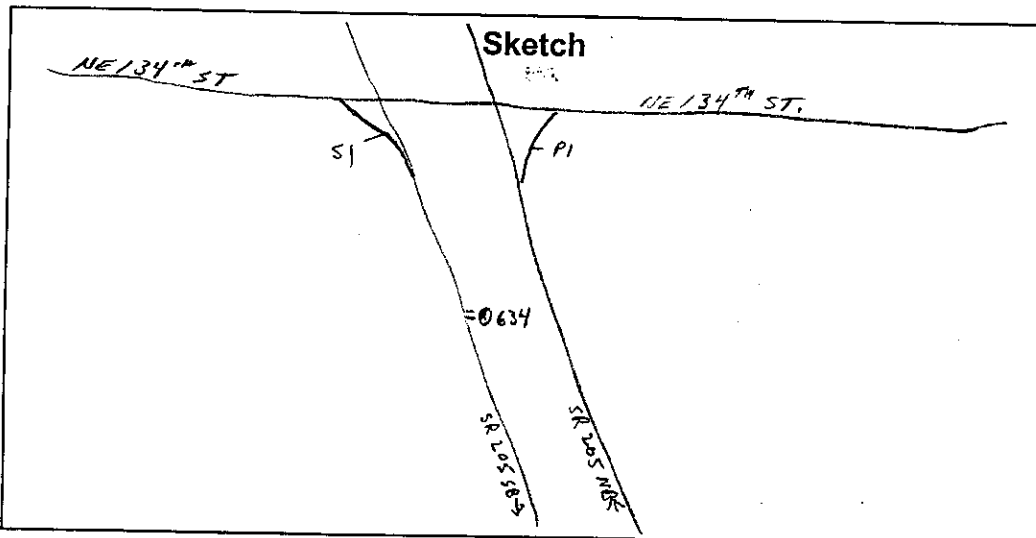
# GK Traffic Counter

Interval  60 Min.  15 Min.  
 2 Tube Classification   
 Lane No.  1  2 LANE 2 OF 2  
 1 Channel Tube A+B   
 2 Channel Tube A, B   
 Direction Channel A \_\_\_\_\_  
 Direction Channel B \_\_\_\_\_  
 Module No. 17290

Counter No. 634 Count ID HPMS  
 SR 205 RRT \_\_\_\_\_ MP 36.27  
 Leg 1 Direction SB OSID \_\_\_\_\_

Station Description - ON SR 205 S/O <sup>NE</sup> NORTHEAST 134<sup>TH</sup> ST. I/C

Date	Day	Time	Comments
4-28-03	2	1239	Manual A 20 B Counter A 20 B SET CNTR OK BS/JM 6.4
4-29	3	1012	Manual A 46 B Counter A 46 B TUBE UP 0915 DN 0925 RECHK CNTR OK JM/BS 6.5
4-30	4	1040	Manual A 45 B Counter A 45 B CHK CNTR OK BS/JM 6.4
5-1	5	0730	Manual A 67 B Counter A 67 B CHK CNTR OK JM/BS 6.5
5-2	6	0757	Manual A B Counter A B TUBE UP P.L. CNTR BS/JM 6.5



J. Mills / B. Johnson  
Field Person



# GK Traffic Counter

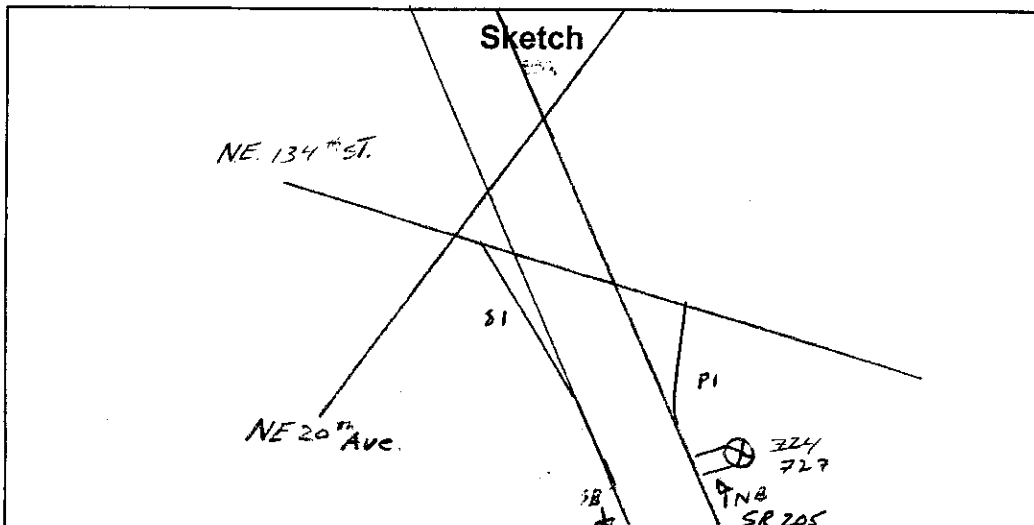
Interval  60 Min.  15 Min.  
 2 Tube Classification   
 Lane No.  1  2 LANE 1 OF 2

1 Channel Tube A+B   
 2 Channel Tube A, B   
 Direction Channel A \_\_\_\_\_  
 Direction Channel B \_\_\_\_\_  
 Module No. 1832L 17959

Counter No. 724 727 Count ID HPMS  
 SR 205 RRT \_\_\_\_\_ MP 36.27  
 Leg 1 Direction NB OSID \_\_\_\_\_

Station Description - ON SR205 S/O N.E. 134<sup>th</sup> Street I/C

Date	Day	Time	Comments
4/28/03	2	1203	Manual A 21 B Counter A 21 B  set o.k. JM/BS 6.5
4/29	3	0956	Manual A 68 B Counter A 66 B  SPLIT 5/9 INTO 3/4 + 2/1 - MISSED 5/9 CHK CNTR JM/BS 6.5
4/30	4	1025	Manual A 35 B Counter A 35 B  NOT CLASSIFYING - PULLED 1025 DN NEW COUNTER AND MODULE 1032 MOD # 17959 REQUR CNTR OK JM/BS 6.6
5/1	5	0716	Manual A 82 B Counter A 82 B  CHK CNTR OK JM/BS 6.7
5/2	6	0743	Manual A B Counter A B  tube up PUL. CNTR JM/BS 6.6



J.M. Hs / B. Johnson

Field Person



# GK Traffic Counter

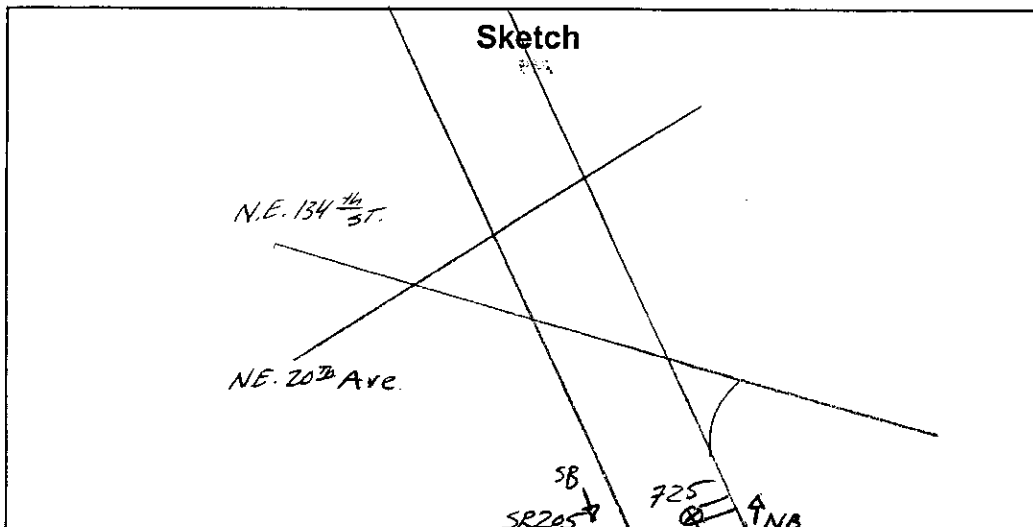
Interval  60 Min.  15 Min.  
 2 Tube Classification   
 Lane No.  1  2 **LANE 2 OF 2**

1 Channel Tube A+B   
 2 Channel Tube A, B   
 Direction Channel A \_\_\_\_\_  
 Direction Channel B \_\_\_\_\_  
 Module No. **18637**

Counter No. **725** Count ID **HPMS**  
 SR **205** RRT \_\_\_\_\_ MP **36.27**  
 Leg **1** Direction **NB** OSID \_\_\_\_\_

Station Description - ON SR205 S/O N.E. 134th Street I/C

Date	Day	Time	Comments
4/28/03	2	1216	Manual A 11 B Counter A 11 B  set o.k. JM/BJ 6.6
4/29	3	1000	Manual A 62 B Counter A 68 B  SPLIT 4 SEMI 6/10 - TIGHTENED TUBE RECHK OK check o.k. JM/B.J.
4/30	4	1026	Manual A 37 B Counter A 37 B  CHK CNTR OK BS/JM 6.5
5/1	5	0717	Manual A 62 B Counter A 60 B  CLASSED 2 5/9 AS SABLE CLASSO CHK CNTR OK JM/BS 6.6
5/2	6	0744	Manual A 1 B Counter A 1 B  P.U. CNTR JM/BS 6.6



**J. Mills/B. Johnson**  
 Field Person



STATE OF WASHINGTON - DEPARTMENT OF TRANSPORTATION  
TRIP SYSTEM  
HOURLY TRAFFIC CLASSIFICATION SUMMARY

SR 205 MP 036.27 OFF SYSTEM ID. LEG 1 DIRECTION OF TRAFFIC SOUTHBOUND LANE 1 OF 2  
COUNT IDENTIFIER HPMS COUNTER NUMBER 000630 DESCRIPTION: ON SR 205 S/O NE 134TH ST I/C

DAY	TOTAL	CARS PICKUPS	BUS	SINGLE UNITS			DOUBLE UNITS			TRAINS			TRUCK %	CLASS UNKNOWN	TOTAL VEHICLES
				4+	UNIT %	4-	5	6	7+	TRAIN %					
04-29-03															
TUESDAY															
AM HOURS															
12 -	1	106	4	1	5.1	4	5	17	15.9	8	4	6	11.5		157
1 -	2	83	1	1	2.4	1	20	17	19.4	6	2	6	11.3		124
2 -	3	68	1	1	4.8	2	14	21	19.2	3	2	6	10.6		104
3 -	4	86	1	1	6.3	3	14	17	17.5	6	2	6	7.9		126
4 -	5	147	5	1	7.8	4	31	18	18.4	1	2	10	6.0		217
5 -	6	357	3	1	4.0	4	28	12	8.0	2	3	10	3.5		423
6 -	7	692	9	4	8.2	9	33	4	5.6	3	3	8	1.3		816
7 -	8														
8 -	9	481	3	4	8.8	4	25	8	6.4	1	9	9	1.6		578
9 -	10	704	9	7	9.7	15	34	16	7.5	1	14	14	1.6		867
10 -	11	737	8	5	8.0	15	63	16	10.2	1	13	13	1.6		920
11 -	12														
PM HOURS															
12 -	1	741	8	10	9.7	17	59	17	9.9	1	14	14	1.6		940
1 -	2	723	9	16	8.0	21	52	23	10.5	1	20	20	2.2		912
2 -	3	841	6	9	6.9	17	63	21	9.8	1	14	14	1.6		1029
3 -	4	942	5	10	7.7	23	47	17	7.7	1	15	15	1.4		1132
4 -	5	968	12	6	7.1	10	43	9	5.5	1	13	13	1.3		1125
5 -	6	998	10	4	6.6	10	40	7	5.0	1	12	12	1.1		1143
6 -	7	801	11	3	5.6	6	45	5	6.1	1	7	7	1.3		916
7 -	8	628	4	3	5.5	9	29	1	5.5	1	8	8	1.3		715
8 -	9	478	3	2	4.9	2	16	4	4.1	2	5	5	1.5		534
9 -	10	381	3	1	4.7	2	22	5	6.7	4	7	7	3.1		446
10 -	11	240	3	1	5.0	2	30	6	12.3	5	4	4	3.0		301
11 -	12	147	1	8	4.7	3	15	6	12.5	6	1	5	6.3		192
AM TOTAL	3461	43	261	28	7.7	58	279	70	9.4	30	15	85	3.0		4332
PM TOTAL	7888	75	501	59	6.8	122	461	121	7.5	22	9	124	1.7		9385
DAY TOTAL	11349	118	762	87	7.1	180	740	191	8.1	52	24	209	2.1	2-AXLE EQUIVALENT	13717







STATE OF WASHINGTON - DEPARTMENT OF TRANSPORTATION  
TRIP SYSTEM  
HOURLY TRAFFIC CLASSIFICATION SUMMARY

DATE 06/04/03  
TIME 06:27:19  
PAGE 5

SR 205 MP 036.27 OFF SYSTEM ID. LEG 1 DIRECTION OF TRAFFIC SOUTHBOUND LANE 1 OF 2

COUNT IDENTIFIER HPMS COUNTER NUMBER 000630 DESCRIPTION: ON SR 205 S/O NE 134TH ST 1/C

FRIDAY AM HOURS	CARS PICKUPS	BUS	SINGLE MED	UNITS HVV	4+	SINGLE UNIT %	DOUBLE UNITS	6+	DOUBLE UNIT %	5-	TRAINS 6	7+	TRAIN %	TRUCK %	CLASS UNKNOWN	TOTAL VEHICLES
12 - 1	129	3	7	3	1	7.9	4-	5	12.4	7	7	6	7.3	27.5		178
1 - 2	61	2	1	3	1	3.0	3	5	22.0	7	2	6	14.0	39.0		100
2 - 3	71	3	3	2	1	2.7	4	2	23.2	6	3	3	10.7	36.6		112
3 - 4	91	1	2	1	1	3.1	6	1	19.3	5	2	5	6.3	28.9		128
4 - 5	144	3	9	2	1	5.8	6	10	15.9	5	2	12	9.1	30.8		208
5 - 6	348	2	20	2	1	5.6	7	9	11.1	1	2	9	2.8	19.4		432
6 - 7	544	5	60	1	1	10.2	4	5	4.6	3	2	13	2.7	17.5		659
7 - 8																
8 - 9																
9 - 10																
10 - 11																
11 - 12																
PM HOURS																
12 - 1																
1 - 2																
2 - 3																
3 - 4																
4 - 5																
5 - 6																
6 - 7																
7 - 8																
8 - 9																
9 - 10																
10 - 11																
11 - 12																
AM TOTAL	1388	16	102	7	2	7.0	32	140	34	11.3	32	11	53	5.3	23.6	1817
PM TOTAL	1388	16	102	7	2	7.0	32	140	34	11.3	32	11	53	5.3	23.6	1817
DAY TOTAL	1388	16	102	7	2	7.0	32	140	34	11.3	32	11	53	5.3	23.6	1817
															2-AXLE EQUIVALENT	2335

STATE OF WASHINGTON - DEPARTMENT OF TRANSPORTATION  
 TRIP SYSTEM  
 HOURLY TRAFFIC CLASSIFICATION SUMMARY

SR 205	MP 036.27	OFF SYSTEM ID.	LEG 1	DIRECTION OF TRAFFIC	LANE 2	OF 2												
COUNT IDENTIFIER	HPMS	COUNTER NUMBER	000634	DESCRIPTION: ON SR 205 S/O NE 134TH ST 1/C														
04-28-03																		
MONDAY																		
AM HOURS	CARS PICKUPS	BUS	SINGLE MED	HVY	4+	SINGLE UNIT %	DOUBLE UNITS 4-	5	6+	DOUBLE UNIT %	5-	TRAINS 6	7+	TRAIN %	TRUCK %	CLASS UNKNOWN	TOTAL VEHICLES	
12 - 1	1																	
1 - 2	2																	
2 - 3	3																	
3 - 4	4																	
4 - 5	5																	
5 - 6	6																	
6 - 7	7																	
7 - 8	8																	
8 - 9	9																	
9 - 10	10																	
10 - 11	11																	
11 - 12	12																	
AM TOTAL	4406	9	219	6	4	4.9	49	83	15	3.0	2	3	28	.7	8.7		4824	
PM TOTAL	4406	9	219	6	4	4.9	49	83	15	3.0	2	3	28	.7	8.7		4824	
DAY TOTAL	4406	9	219	6	4	4.9	49	83	15	3.0	2	3	28	.7	8.7		4824	
																		5114

2-AXLE EQUIVALENT

STATE OF WASHINGTON - DEPARTMENT OF TRANSPORTATION  
 TRIP SYSTEM  
 HOURLY TRAFFIC CLASSIFICATION SUMMARY

SR 205	MP 036.27	OFF SYSTEM ID.	LEG 1	DIRECTION OF TRAFFIC	LANE 2	OF 2											
COUNT IDENTIFIER	HPMS	COUNTER NUMBER	000634	DESCRIPTION: ON SR 205 S/O NE 134TH ST I/C													
04-29-03																	
TUESDAY																	
AM HOURS	CARS PICKUPS	BUS	SINGLE MED	HVY	4+	SINGLE UNIT %	DOUBLE 4-	DOUBLE 5	6+	DOUBLE UNIT %	5-	TRAINS 6	7+	TRAIN %	TRUCK %	CLASS UNKNOWN	TOTAL VEHICLES
12 - 1	43		1			2.2				2.2	1			2.2	6.5		46
1 - 2	24					3.8				3.8				3.8	7.7		26
2 - 3	18					10.0				10.0				10.0	10.0		20
3 - 4	28					3.3				3.3				3.3	6.7		30
4 - 5	51		3			6.6				6.6				6.6	16.4		61
5 - 6	183		14			6.9				6.9				6.9	10.3		204
6 - 7	557		40			7.4				7.4				7.4	10.5		622
7 - 8																	
8 - 9	348		20			6.7				6.7				6.7	10.5		389
9 - 10	467		33			7.3				7.3				7.3	12.1		531
10 - 11	472		22			4.3				4.3				4.3	8.2		514
PM HOURS																	
12 - 1	452		3			5.8				5.8				5.8	12.1		514
1 - 2	470		29			6.3				6.3				6.3	10.8		527
2 - 3	579		34			6.1				6.1				6.1	11.1		651
3 - 4	681		39			5.7				5.7				5.7	9.7		754
4 - 5	686		44			6.1				6.1				6.1	9.4		757
5 - 6	695		32			5.4				5.4				5.4	7.9		755
6 - 7	454		25			5.1				5.1				5.1	8.1		494
7 - 8	348		18			5.1				5.1				5.1	7.2		375
8 - 9	231		10			4.5				4.5				4.5	6.1		246
9 - 10	177		6			3.2				3.2				3.2	6.8		190
10 - 11	99		3			3.6				3.6				3.6	10.0		110
11 - 12	56					5.0				5.0				5.0	6.7		60
AM TOTAL	2191		10			6.2				6.2				6.2	10.3		2443
PM TOTAL	4928		17			5.6				5.6				5.6	9.3		5433
DAY TOTAL	7119		27			5.8				5.8				5.8	9.6		7876
															2-AXLE EQUIVALENT		8389

STATE OF WASHINGTON - DEPARTMENT OF TRANSPORTATION  
TRIP SYSTEM  
HOURLY TRAFFIC CLASSIFICATION SUMMARY

SR 205 MP 036.27 OFF SYSTEM ID. LEG 1 DIRECTION OF TRAFFIC SOUTHBOUND LANE 2 OF 2  
COUNT IDENTIFIER HPMS COUNTER NUMBER 000634 DESCRIPTION: ON SR 205 S/O NE 134TH ST I/C

DAY	AM TOTAL	PM TOTAL	CARS PICKUPS	BUS	SINGLE MED	HVY	4+	SINGLE UNIT %	DOUBLE 4-	DOUBLE 5	DOUBLE 6+	DOUBLE UNIT %	5-	TRAINS 6	TRAINS 7+	TRAIN %	TRUCK %	CLASS UNKNOWN	TOTAL VEHICLES	
04-30-03	4401	5342	40	6	234	9	8	3	5.3	36	73	20	2.7	2	4	32	.8	8.8	4826	
WEDNESDAY	5342		24	9	255			4.7	67	108	19	3.3	1	6	29	.6	8.6		5847	
AM HOURS			24																	
12 - 1			24																	
1 - 2			26																	
2 - 3			25																	
3 - 4			50																	
4 - 5			177																	
5 - 6			675																	
6 - 7			1097																	
7 - 8			771																	
8 - 9			565																	
9 - 10			473																	
10 - 11			478																	
11 - 12			533																	
PM HOURS			496																	
12 - 1			576																	
1 - 2			728																	
2 - 3			664																	
3 - 4			815																	
4 - 5			516																	
5 - 6			344																	
6 - 7			303																	
7 - 8			201																	
8 - 9			104																	
9 - 10			62																	
10 - 11																				
11 - 12																				
DAY TOTAL	9743			15	489	17	12	5.0	103	181	39	3.0	3	10	61	.7	8.7	2-AXLE EQUIVALENT	10673	
AM TOTAL	4401			6	234	9	8	5.3	36	73	20	2.7	2	4	32	.8	8.8		4826	
PM TOTAL	5342			9	255			4.7	67	108	19	3.3	1	6	29	.6	8.6		5847	



STATE OF WASHINGTON - DEPARTMENT OF TRANSPORTATION  
 TRIP SYSTEM  
 HOURLY TRAFFIC CLASSIFICATION SUMMARY

SR 205 MP 036.27 OFF SYSTEM ID. LEG 1 DIRECTION OF TRAFFIC SOUTHBOUND LANE 2 OF 2

COUNT IDENTIFIER HPMS COUNTER NUMBER 000634 DESCRIPTION: ON SR 205 S/O NE 134TH ST I/C

FRIDAY AM HOURS	CARS PICKUPS	BUS	SINGLE MED	HVY	4+	SINGLE UNIT %	DOUBLE UNITS	6+	DOUBLE UNIT %	5-	TRAINS 6	7+	TRAIN %	TRUCK %	CLASS UNKNOWN	TOTAL VEHICLES
12 - 1	48		3			5.4			3.6	2	1		5.4	14.3		56
11 - 2	28		1			6.7					1		7.1	6.7		30
10 - 3	23					3.6		2	7.1				7.1	17.9		28
9 - 4	30		2			6.1		1	3.0				3.0	9.1		33
8 - 5	45		2			3.8		2	3.8				3.8	13.5		52
7 - 6	163		10			5.6		1	3.4				3.4	8.9		179
6 - 7	410	3	42		1	9.9	5	4	1.9				.4	12.2		467
5 - 8																
4 - 9																
3 - 10																
2 - 11																
1 - 12																
PM HOURS																
12 - 1																
11 - 2																
10 - 3																
9 - 4																
8 - 5																
7 - 6																
6 - 7																
5 - 8																
4 - 9																
3 - 10																
2 - 11																
1 - 12																
AM TOTAL	747	3	62		1	7.8	6	13	2.6	3	2	5	1.2	11.6		845
PM TOTAL	747	3	62		1	7.8	6	13	2.6	3	2	5	1.2	11.6		845
DAY TOTAL	747	3	62		1	7.8	6	13	2.6	3	2	5	1.2	11.6	2-AXLE EQUIVALENT	845

STATE OF WASHINGTON - DEPARTMENT OF TRANSPORTATION  
TRIP SYSTEM  
HOURLY TRAFFIC CLASSIFICATION SUMMARY

SR 205 MP 036.27 OFF SYSTEM ID. LEG 1 DIRECTION OF TRAFFIC SOUTHBOUND LANE 12 OF 2  
COUNT IDENTIFIER HPMS COUNTER NUMBER 000634 DESCRIPTION: ON SR 205 S/O NE 134TH ST I/C

DAY	AM TOTAL	PM TOTAL	CARS PICKUPS	BUS	SINGLE MED	SINGLE UNITS HVY	4+ UNIT %	DOUBLE UNITS 4-	DOUBLE UNITS 5	DOUBLE UNITS 6+	DOUBLE UNIT %	5- TRAINS	6 TRAINS	7+ TRAINS	TRAIN %	TRUCK %	CLASS UNKNOWN	TOTAL VEHICLES
04-28-03																		
MONDAY																		
AM HOURS																		
12 -	1	1	1228	10	72	14	6.7	22	65	12	6.9	1	1	13	1.0	14.7		1439
1 -	2	2	1315	14	81	13	7.2	26	65	15	6.8	1	3	24	1.7	15.8		1561
2 -	3	3	1564	13	118	9	7.7	31	52	14	5.3	1	2	19	1.2	14.3		1824
3 -	4	4	1664	10	100	7	6.2	29	72	14	6.0	1	1	14	.8	13.0		1913
4 -	5	5	1659	8	97	9	6.1	25	78	5	5.7	1	2	7	.5	12.3		1891
5 -	6	6	1247	6	57	7	4.7	8	40	3	3.7	1	1	9	.8	9.2		1374
6 -	7	7	853	7	42	1	5.3	26	26	5	4.0	1	1	11	1.2	10.4		952
7 -	8	8	674	9	29		3.9	6	24	9	5.2	1	1	8	1.2	10.3		751
8 -	9	9	517	2	20		3.8	3	16	2	6.1	1	2	11	2.4	9.9		574
9 -	10	10	353	2	15		4.2	4	18	3	6.1	6	2	6	3.4	13.7		409
10 -	11	11	210	8	8		3.1	3	19	6	10.8	3	4	6	5.0	18.9		259
11 -	12	12																
PM HOURS																		
12 -	1	1																
1 -	2	2																
2 -	3	3																
3 -	4	4																
4 -	5	5																
5 -	6	6																
6 -	7	7																
7 -	8	8																
8 -	9	9																
9 -	10	10																
10 -	11	11																
11 -	12	12																
AM TOTAL	11284	72	639	54	10	6.0	164	475	88	5.6	15	15	18	128	1.2	12.8		12947
PM TOTAL	11284	72	639	54	10	6.0	164	475	88	5.6	15	18	18	128	1.2	12.8		12947
DAY TOTAL	11284	72	639	54	10	6.0	164	475	88	5.6	15	18	18	128	1.2	12.8	2-AXLE EQUIVALENT	14415

SR 205 MP 036.27 OFF SYSTEM ID. LEG 1 DIRECTION OF TRAFFIC SOUTHBOUND LANE 12 OF 2  
COUNT IDENTIFIER HPMS COUNTER NUMBER 000634 DESCRIPTION: ON SR 205 S/O NE 134TH ST 1/C

DAY	TOTAL	CARS PICKUPS	BUS	SINGLE MED	SINGLE HVY	SINGLE 4+	SINGLE UNIT %	DOUBLE 4-	DOUBLE 5	DOUBLE 6+	DOUBLE UNIT %	5-	TRAINS 6	TRAINS 7+	TRAIN %	TRUCK %	CLASS UNKNOWN	TOTAL VEHICLES
04-29-03																		
TUESDAY																		
AM HOURS	5652	149	4	4	1	4.4	4-	5	18	7	12.8	9	4	6	9.4	26.6		205
12 - 1	12816	107	1	2	1	2.0	1	1	21	3	16.7	6	2	7	10.0	28.7		150
1 - 2		86	1	2	2	4.0	2	2	16	4	17.7	3	2	6	8.9	30.6		124
2 - 3		114	5	7	2	5.8	3	3	15	5	14.7	6	1	3	6.4	26.9		156
3 - 4		198	3	13	2	7.2	4	4	35	5	15.8	1	3	12	5.8	28.8		278
4 - 5		540	3	27	1	4.9	5	5	31	3	6.2	2	3	12	2.7	13.9		627
5 - 6		1249	14	93	4	7.9	12	43	6	6	4.2	3	3	12	2.7	13.9		1438
6 - 7																		
7 - 8																		
8 - 9		829	3	64	10	8.0	8	31	12	5.3	6.0	2	1	10	1.0	14.3		967
9 - 10		1171	14	100	8	8.8	18	43	23	6.0	7.5	2	1	20	1.4	16.2		1398
10 - 11		1209	8	83	5	6.7	17	73	18	7.5		2	1	18	1.5	15.7		1434
11 - 12																		
PM HOURS	1193	1193	11	95	13	8.3	24	73	24	8.3	8.3	2	2	17	1.3	18.0		1454
1 - 2		1193	11	75	18	7.4	26	64	27	8.1	7.4	1	3	23	1.6	17.1		1439
2 - 3		1420	9	89	12	6.6	23	77	24	7.4	6.0	1	2	21	1.5	15.5		1680
3 - 4		1623	7	111	10	6.9	31	63	19	6.0	4.4	1	2	18	1.1	13.9		1886
4 - 5		1654	12	106	7	6.7	20	53	10	4.4	3.8	1	2	16	1.0	12.1		1882
5 - 6		1693	14	93	7	6.1	16	48	8	3.8	4.2	1	1	16	.9	10.8		1898
6 - 7		1255	11	62	4	5.7	11	50	6	4.8	4.2	1	1	7	.9	10.5		1090
7 - 8		976	5	53	1	5.3	10	35	1	4.2	3.3	2	1	5	1.0	10.5		780
8 - 9		709	4	32	4	4.7	2	20	6	5.5	5.5	4	4	8	2.5	12.3		636
9 - 10		558	4	24	1	4.2	2	27	6	10.2	10.2	7	2	4	2.7	17.5		411
10 - 11		339	4	15	8	4.6	2	34	6	10.7	10.7	6	2	5	5.2	19.4		252
11 - 12		203	1	8		3.6	3	18	6									
AM TOTAL	5652	53	395	35	3	7.2	71	326	86	7.1	5.9	32	16	106	2.3	16.6		6775
PM TOTAL	12816	92	763	72	13	6.3	170	562	141	5.9	5.9	24	16	149	1.3	13.5		14818
DAY TOTAL	18468	145	1158	107	16	6.6	241	888	227	6.3	6.3	56	32	255	1.6	14.5	2-AXLE EQUIVALENT	21593



STATE OF WASHINGTON - DEPARTMENT OF TRANSPORTATION  
TRIP SYSTEM  
HOURLY TRAFFIC CLASSIFICATION SUMMARY

SR 205 MP 036.27 OFF SYSTEM ID. LEG 1 DIRECTION OF TRAFFIC SOUTHBOUND LANE 12 OF 2  
COUNT IDENTIFIER HPMS COUNTER NUMBER 000634 DESCRIPTION: ON SR 205 S/O NE 134TH ST 1/C

DAY	TOTAL	CARS PICKUPS	BUS	SINGLE MED	SINGLE HVY	4+	SINGLE UNIT %		DOUBLE UNITS		DOUBLE UNIT %		TRAINS			TRAIN %	TRUCK %	CLASS UNKNOWN	TOTAL VEHICLES
							4-	5-	6+	7+	5-	6	7+						
04-30-03																			
WEDNESDAY																			
AM HOURS	10217	156	3	6	1		4.6	4-	5	6+	8.8	5-	6	7+	6.2	19.6		11910	
12 - 1	13564	105	1	3	1		3.1	2	16	3	21.9	9	6	3	9.4	34.4		15539	
1 - 2		80		4			3.7	1	12	3	14.8	1	1	4	7.4	25.9			
2 - 3		95		5			4.0	1	30	3	23.8	6	2	6	9.3	37.1			
3 - 4		178		13			7.5	3	26	6	15.1	5	5	7	6.7	29.4			
4 - 5		520		33			6.9	6	30	8	6.9	2	4	13	3.0	16.8			
5 - 6		1434		107			7.2	5	43	16	4.5	2	4	20	1.5	13.1			
6 - 7		2149		103		1	5.1	15	43	16	3.4	2	3	22	1.1	9.6			
7 - 8		1699		97		2	6.0	21	56	17	4.8	1	2	24	1.3	12.1			
8 - 9		1332		96		2	8.1	20	47	16	5.0	1	1	23	1.6	14.7			
9 - 10		1178		86		4	8.0	16	56	10	5.7		1	16	1.2	14.9			
10 - 11		1291		81		2	6.5	20	64	18	6.7		1	21	1.5	14.7			
11 - 12																			
PM HOURS	1284	1284	12	99	10		7.9	19	73	16	7.0	3		25	1.8	16.7		1541	
1 - 2	1255	1255	13	77	9		6.7	23	74	8	7.1	3	1	10	.7	14.6		1470	
2 - 3	1369	1369	9	101	10	1	7.4	28	83	16	7.7	2	2	20	1.5	16.6		1641	
3 - 4	1662	1662	10	87	7	3	5.7	18	57	15	4.8		3	24	1.4	11.9		1886	
4 - 5	1583	1583	9	103	8	1	6.7	29	44	12	4.7		2	11	.7	12.2		1802	
5 - 6	1896	1896	12	95	4	2	5.3	28	51	6	4.0		4	15	.9	10.3		2113	
6 - 7	1381	1381	12	62	1		4.9	14	35	8	3.7		2	17	1.2	9.9		1532	
7 - 8	1028	1028	6	47	1		4.8	11	20	4	3.1	1	2	14	.7	8.6		1125	
8 - 9	850	850	2	41	1		4.5	10	26	5	4.3	1	2	7	1.8	10.6		951	
9 - 10	633	633	1	23	1		3.6	10	31	7	6.7		3	7	1.4	11.7		717	
10 - 11	396	396	3	15	1		3.8	7	26	4	8.5	10	3	5	3.8	16.1		472	
11 - 12	227	227	1	8	2		3.8	4	26	4	11.8	11	4	2	5.9	21.5		289	
AM TOTAL	10217	156	75	634	57	12	6.5	123	453	115	5.8	33	29	162	1.9	14.2		11910	
PM TOTAL	13564	105	90	758	54	7	5.8	201	546	108	5.5	28	26	157	1.4	12.7		15539	
DAY TOTAL	23781	165	165	1392	111	19	6.1	324	999	223	5.6	61	55	319	1.6	13.4	2-AXLE EQUIVALENT	27449	

27449  
30791

STATE OF WASHINGTON - DEPARTMENT OF TRANSPORTATION  
TRIP SYSTEM  
HOURLY TRAFFIC CLASSIFICATION SUMMARY

SR 205 MP 036.27 OFF SYSTEM ID. COUNTER NUMBER 000634 LEG 1 DESCRIPTION: ON SR 205 S/O NE 134TH ST I/C LANE 12 OF 2

DAY	THURSDAY	AM HOURS	PM HOURS	CARS PICKUPS	BUS	SINGLE MED	HYV	4+	SINGLE UNIT %	DOUBLE UNIT %	DOUBLE UNIT %	5-	TRAINS	7+	TRAIN %	TRUCK %	CLASS UNKNOWN	TOTAL VEHICLES
05-01-03	12	1	1	195	4	4	1	1	3.3	4.5	12.8	6	6	4	4.5	20.6		243
	1	2	2	133	2	2	1	2	2.9	9.8	10.9	7	7	5	9.8	23.6		174
	2	3	3	104	1	2	1	3	2.2	5.1	16.8	3	3	1	5.1	24.1		137
	3	4	4	107	1	5	2	4	5.0	9.4	18.8	4	4	1	9.4	27.5		160
	4	5	5	192	6	12	3	2	7.9	9.1	10.6	9	2	13	9.1	33.1		265
	5	6	6	520	5	26	3	3	5.5	3.4	6.8	6	1	14	3.4	15.7		617
	6	7	7	1474	8	100	3	1	5.7	1.2	3.9	1	1	18	1.2	11.8		1672
	7	8	8	2140	13	112	10	1	6.7	1.0	3.8	1	1	21	1.0	10.4		2389
	8	9	9	1656	3	92	9	1	5.3	1.1	4.7	1	1	18	1.1	11.1		1862
	9	10	10	1260	7	90	9	3	7.4	1.3	6.2	1	1	14	1.3	14.8		1479
	10	11	11	1200	10	81	10	2	7.4	1.3	5.0	1	2	15	1.3	13.7		1391
	11	12	12	1256	12	82	12	2	7.3	1.4	6.0	1	2	20	1.4	14.7		1473
	12	1	1	1321	12	71	10	1	6.1	1.2	6.9	1	2	16	1.2	14.2		1540
	1	2	2	1313	10	103	13	2	8.2	1.4	6.5	1	2	19	1.4	16.0		1564
	2	3	3	1439	12	97	16	3	7.5	1.1	6.6	1	2	15	1.1	15.2		1697
	3	4	4	1654	16	123	6	6	7.8	1.2	5.8	1	7	16	1.2	14.8		1942
	4	5	5	1812	11	113	6	4	6.5	1.2	4.9	1	2	21	1.2	12.5		2071
	5	6	6	1781	8	93	5	1	5.5	.7	3.7	2	2	10	.7	9.9		1977
	6	7	7	1395	13	65	5	1	5.2	1.0	3.6	1	1	10	1.0	9.5		1542
	7	8	8	1005	6	64	2	3	6.5	1.0	3.6	1	2	7	1.0	9.3		1131
	8	9	9	843	3	36	2	1	4.7	1.0	3.6	2	2	7	1.0	9.3		929
	9	10	10	755	3	29	1	1	4.2	1.0	3.6	5	5	7	1.0	9.3		834
	10	11	11	432	6	17	1	1	4.2	1.0	3.6	4	5	9	1.0	9.3		834
	11	12	12	290	2	12	1	1	4.1	1.0	3.6	7	1	8	1.0	9.3		544
AM TOTAL				10235	71	608	56	10	6.3	154	415	97	17	158	1.8	13.7		11862
PM TOTAL				14040	105	823	62	23	6.3	235	506	92	25	148	1.2	12.7		16085
DAY TOTAL				24275	176	1431	118	33	6.3	389	921	189	42	306	1.5	13.1		27947
																	2-AXLE EQUIVALENT	31137

SR 205 MP 036.27 OFF SYSTEM ID. LEG 1 DIRECTION OF TRAFFIC SOUTHBOUND LANE 12 OF 2  
COUNT IDENTIFIER HPMS COUNTER NUMBER 000634 DESCRIPTION: ON SR 205 S/O NE 134TH ST I/C

FRIDAY AM HOURS	CARS PICKUPS	BUS MED	SINGLE UNITS HVY	4+	SINGLE UNIT %	DOUBLE UNITS 4-5	6+	DOUBLE UNIT %	5-6	TRAINS 6-7	7+	TRAIN %	TRUCK %	CLASS UNKNOWN	TOTAL VEHICLES
12 - 1	177	3	10	3	7.3	3	5	10.3	9	1	6	6.8	24.4		234
1 - 2	89	2	3	1	3.8	4	2	16.9	7	2	5	10.8	31.5		130
2 - 3	94	3	4	3	2.9	6	2	20.0	7	4	3	10.0	32.9		140
3 - 4	121	1	4	1	3.7	2	1	16.1	3	5	5	5.0	24.8		161
4 - 5	189	3	11	2	5.4	6	10	13.5	5	2	15	8.5	27.3		260
5 - 6	511	2	30	2	5.6	8	10	8.8	1	2	9	2.0	16.4		611
6 - 7	954	8	102	1	10.0	9	5	3.5	3	2	15	1.8	15.3		1126
7 - 8															
8 - 9															
9 - 10															
10 - 11															
11 - 12															
PM HOURS															
12 - 1															
1 - 2															
2 - 3															
3 - 4															
4 - 5															
5 - 6															
6 - 7															
7 - 8															
8 - 9															
9 - 10															
10 - 11															
11 - 12															

AM TOTAL	2135	19	164	7	3	7.3	38	153	37	8.6	35	13	58	4.0	19.8	2662
PM TOTAL																
DAY TOTAL	2135	19	164	7	3	7.3	38	153	37	8.6	35	13	58	4.0	19.8	2662

04-28-03 THRU 05-02-03

AVERAGE WEEKDAY CLASSIFICATION VOLUMES \*\*\*\*\*

CARS PICKUPS	BUS MED	SINGLE UNITS HVY	4+	SINGLE UNIT %	DOUBLE UNITS 4-5	6+	DOUBLE UNIT %	5-6	TRAINS 6-7	7+	TRAIN %	TRUCK %	CLASS UNKNOWN	TOTAL VEHICLES	
22175	162	1327	112	23	6.3	318	936	213	5.7	61	43	293	1.54	13.6	25663
24028	171	1412	115	26	6.22	357	960	206	5.50	64	49	313	1.5	13.6	28800
TOTAL HOURS FOR COUNT	25663	X	SEASONAL ADJ.	FACTOR 0.9600	=	ESTIMATED	AVG DAILY TRAFFIC	24636							27698
AVG WEEKDAY	22175														27698
AVG WEEKDAY VOL	25663	X	SEASONAL ADJ.	FACTOR 0.9600	=	ESTIMATED	AVG DAILY TRAFFIC	24636							27698

27698

24636

27698

STATE OF WASHINGTON - DEPARTMENT OF TRANSPORTATION  
TRIP SYSTEM  
HOURLY TRAFFIC CLASSIFICATION SUMMARY

SR 205 MP 036.27 OFF SYSTEM ID. LEG 1 DIRECTION OF TRAFFIC NORTHBOUND LANE 1 OF 2  
COUNT IDENTIFIER HPMS COUNTER NUMBER 000724 \* DESCRIPTION: ON SR 205 S/O NE 134TH ST I/C

04-28-03	CARS PICKUPS	BUS	SINGLE MED	UNITS HVY	4+	SINGLE UNIT %	DOUBLE UNITS 4-	5	6+	DOUBLE UNIT %	5-	TRAINS 6	7+	TRAIN %	TRUCK %	CLASS UNKNOWN	TOTAL VEHICLES
AM HOURS	12	1															
1 -	2																
2 -	3																
3 -	4																
4 -	5																
5 -	6																
6 -	7																
7 -	8																
8 -	9																
9 -	10																
10 -	11																
11 -	12																
AM TOTAL	8689					7.8	100	267	49	4.1	11	17	64	.9	12.8	157	10144
PM TOTAL	8689					7.8	100	267	49	4.1	11	17	64	.9	12.8	157	10144
DAY TOTAL	8689					7.8	100	267	49	4.1	11	17	64	.9	12.8	157	10144

2-AXLE EQUIVALENT 11008

STATE OF WASHINGTON - DEPARTMENT OF TRANSPORTATION  
TRIP SYSTEM  
HOURLY TRAFFIC CLASSIFICATION SUMMARY

SR 205 MP 036.27 OFF SYSTEM ID. LEG 1 DIRECTION OF TRAFFIC NORTHBOUND LANE 1 OF 2  
COUNT IDENTIFIER HPMS COUNTER NUMBER 000724 \* DESCRIPTION: ON SR 205 S/O NE 134TH ST I/C

04-29-03 TUESDAY AM HOURS	CARS PICKUPS	BUS	SINGLE MED	UNITS HVV	4+	SINGLE UNIT %	DOUBLE 4-	UNITS 5	6+	DOUBLE UNIT %	5-	TRAINS 6	7+	TRAIN %	TRUCK %	CLASS UNKNOWN	TOTAL VEHICLES
12 - 1	129	2	8	8	1	10.2	1	17	1	9.6	3	1	2	3.4	23.2	7	177
1 - 2	63	1	4	5	1	11.1	1	12	1	14.1	1	2	1	4.0	29.3	7	99
2 - 3	45	3	5	3	1	13.1	1	9	4	16.7	2	1	2	6.0	35.7	9	84
3 - 4	43	2	2	3	1	4.7	5	7	5	15.9	3	1	2	2.8	23.4	39	107
4 - 5	62	1	4	4	1	6.6	3	13	5	15.4	1	1	3	2.7	22.8	43	136
5 - 6	206	1	7	6	1	3.8	4	27	3	4.1	1	1	3	1.2	9.1	105	342
6 - 7	423	6	29	1	1	5.8	5	27	7	4.7	1	1	8	1.1	9.1	199	704
7 - 8	569	12	38	6	1	5.3	10	26	14	4.4	1	1	5	1.1	10.4	314	985
8 - 9	638	12	52	5	2	7.0	17	24	14	5.5	1	1	17	1.7	13.1	228	997
9 - 10	661	17	73	20	1	12.8	13	40	6	6.8	3	3	10	2.1	21.6	23	873
10 - 11	684	10	77	20	3	12.3	13	35	15	7.0	1	1	17	1.5	20.8	26	896
11 - 12	723	14	76	12	2	11.2	25	30	20	8.1	1	1	13	1.5	20.8	12	928
PM HOURS																	
12 - 1	817	13	72	10	4	9.7	20	27	7	5.3	2	2	19	2.1	17.1	25	1016
1 - 2	875	7	82	12	5	9.7	32	29	9	6.4	1	1	20	2.0	18.0	24	1097
2 - 3	977	9	72	13	1	8.2	19	26	17	5.2	1	1	16	1.4	14.9	29	1182
3 - 4	1078	14	83	19	3	9.2	24	30	11	5.0	2	2	11	1.0	15.2	19	1294
4 - 5	1257	7	96	14	6	8.4	20	29	10	4.0	2	1	7	1.0	13.1	19	1468
5 - 6	1357	7	63	6	1	5.1	17	30	6	3.5	1	1	5	0.6	9.2	19	1505
6 - 7	978	6	59	4	1	6.3	19	19	5	3.9	1	1	4	0.5	10.7	19	1117
7 - 8	731	1	43	5	1	5.9	4	24	2	4.0	2	2	4	1.0	10.9	6	827
8 - 9	602	3	54	6	1	8.9	4	16	5	2.7	6	1	7	2.0	13.5	11	709
9 - 10	562	3	33	4	1	6.5	3	16	1	1.8	2	3	3	0.8	9.1	9	628
10 - 11	285	1	16	5	1	6.0	4	24	3	8.5	3	1	4	2.2	16.7	20	366
11 - 12	175	1	9	1	1	4.3	1	11	2	5.4	6	2	1	3.5	13.2	48	257
AM TOTAL	4246	77	375	93	11	8.8	97	247	81	6.7	9	12	68	1.4	16.9	1012	6328
PM TOTAL	9694	72	682	101	22	7.6	164	272	78	4.5	23	15	104	1.2	13.4	239	11466
DAY TOTAL	13940	149	1057	194	33	8.1	261	519	159	5.3	32	27	172	1.3	14.6	1251	17794

2-AXLE EQUIVALENT

19814

SR 205 MP 036.27 OFF SYSTEM ID. COUNTER NUMBER 000724 \* DESCRIPTION: ON SR 205 S/O NE 134TH ST I/C LANE 1 OF 2  
LEG 1 DIRECTION OF TRAFFIC NORTHBOUND

DAY	AM TOTAL	PM TOTAL	CARS PICKUPS	BUS MED	SINGLE HVY	4+	SINGLE UNIT %	DOUBLE UNITS	DOUBLE UNIT %	5- TRAINS	6	7+	TRAIN %	TRUCK %	CLASS UNKNOWN	TOTAL VEHICLES
04-30-03	2183	9940	89	4	2	4	3.4	8	5.0	2	1	2	2.8	11.2	70	179
WEDNESDAY	37	41	37	1	4	1	0.9	14	15.1	3	1	2	2.8	18.9	49	106
AM HOURS	1	3	1	2	2	1	6.6	10	12.4	1	1	2	2.5	21.5	54	121
12 -	2	3	2	3	2	1	6.3	11	16.2	1	1	4	4.5	27.0	49	111
1 -	3	4	3	4	3	1	5.6	9	9.9	1	1	2	2.8	18.3	66	142
2 -	4	5	4	5	4	1	4.0	12	4.3	1	1	2	.6	8.8	187	328
3 -	5	6	5	6	5	1	3.3	12	3.0	1	1	2	.3	6.6	417	634
4 -	6	7	6	7	6	1	3.0	13	2.1	1	1	4	.6	5.9	513	902
5 -	7	8	7	8	7	1	3.2	13	3.0	1	1	4	.3	6.9	526	866
6 -	8	9	8	9	8	4	3.6	21	2.7	2	3	3	.4	6.9	499	808
7 -	9	10	9	10	9	5	3.8	17	7.6	1	1	9	1.0	19.0	21	986
8 -	10	11	10	11	10	3	10.3	45	8.8	1	1	16	1.7	21.3	17	974
9 -	11	12	11	12	11	2	10.7	52	5.9	1	2	16	.8	15.9	22	1061
PM HOURS	1	2	1	2	1	1	9.1	37	5.9	2	2	7	.8	15.3	14	1150
12 -	2	3	2	3	2	2	8.6	40	5.4	1	1	10	.8	15.2	13	1270
1 -	3	4	3	4	3	2	9.0	42	5.0	2	2	10	.4	12.5	15	1445
2 -	4	5	4	5	4	2	7.1	42	3.9	1	1	9	.7	10.2	12	1503
3 -	5	6	5	6	5	2	6.0	29	3.5	2	2	4	1.2	10.6	13	1152
4 -	6	7	6	7	6	1	6.7	25	4.1	1	1	4	.7	10.6	12	907
5 -	7	8	7	8	7	1	6.7	21	3.3	2	2	4	2.3	12.3	9	780
6 -	8	9	8	9	7	1	6.7	16	3.2	2	2	6	2.0	8.3	6	665
7 -	9	10	9	10	8	1	6.7	16	8.1	2	2	6	1.4	15.1	2	443
8 -	10	11	10	11	9	1	5.6	15	6.6	4	1	2	2.2	14.6	11	316
9 -	11	12	11	12	10	3	5.7	15	4.8	4	1	2	.9	10.6	2451	5183
AM TOTAL	2183	9940	37	154	51	15	5.0	45	4.8	7	5	33	1.1	13.5	153	11666
PM TOTAL	9940	671	85	671	85	11	7.3	147	5.1	31	8	86	1.1	13.5	153	11666
DAY TOTAL	12123	122	825	136	26	6.6	192	548	5.0	38	13	119	1.0	12.6	2604	16849
2-AXLE EQUIVALENT 18544																

STATE OF WASHINGTON - DEPARTMENT OF TRANSPORTATION  
 TRIP SYSTEM  
 HOURLY TRAFFIC CLASSIFICATION SUMMARY

SR 205 MP 036.27 OFF SYSTEM ID. LEG 1 DIRECTION OF TRAFFIC NORTHBOUND LANE 1 OF 2  
 COUNT IDENTIFIER HPMS COUNTER NUMBER 000724 \* DESCRIPTION: ON SR 205 S/O NE 134TH ST I/C

05-01-03 THURSDAY AM HOURS	CARS PICKUPS	BUS	SINGLE MED	HVT	4+	SINGLE UNIT %	DOUBLE 4-	5+	TRAINS 6	7+	TRAIN %	TRUCK %	CLASS UNKNOWN	TOTAL VEHICLES
12 - 1	147	2	7	8	1	7.6	2	7	2	5	7.1	23.7	4	198
1 - 2	81	1	3	3	1	3.9	15	8	2	4	10.9	34.1	4	129
2 - 3	64	1	4	2	1	5.0	20	5	2	4	10.7	40.5	8	121
3 - 4	55	1	2	6	1	10.3	3	2	1	4	6.5	41.1	8	107
4 - 5	90	1	11	4	1	10.7	8	2	2	3	3.3	32.0	12	150
5 - 6	259	7	30	10	3	11.0	10	2	3	9	3.9	25.3	12	363
6 - 7	522	12	60	13	6	12.0	10	2	1	13	2.5	20.9	20	685
7 - 8	745	9	65	11	6	9.6	15	2	2	9	9.9	15.5	70	965
8 - 9	706	4	56	11	1	7.2	19	4	1	16	1.8	16.1	128	994
9 - 10	627	4	72	11	1	9.8	21	3	1	12	1.4	17.9	141	935
10 - 11	607	6	60	14	1	8.8	18	2	2	10	1.4	16.7	158	918
11 - 12	698	8	52	8	1	7.0	19	1	1	12	1.2	13.5	158	990
PM HOURS														
12 - 1	744	6	59	6	1	7.0	14	25	1	8	.9	12.2	152	1021
1 - 2	761	14	53	5	1	6.8	20	25	6	6	.7	12.0	176	1065
2 - 3	913	9	57	11	1	6.4	15	34	1	1	.1	11.1	163	1211
3 - 4	1000	13	51	7	1	5.5	13	27	9	9	.7	9.9	175	1304
4 - 5	1069	3	68	12	1	5.9	13	20	2	4	.4	9.0	215	1411
5 - 6	1181	3	57	8	2	4.7	11	26	3	4	.5	8.1	177	1477
6 - 7	898	6	36	1	1	3.9	9	17	1	8	.8	7.0	186	1166
7 - 8	687	1	29	2	1	3.4	10	23	4	5	1.0	8.4	166	931
8 - 9	557	2	20	1	1	2.9	3	19	1	3	.6	6.9	189	801
9 - 10	465	1	9	1	1	1.5	2	14	3	3	.9	5.2	179	679
10 - 11	259	6	6	1	1	1.7	3	20	1	3	1.0	9.2	105	401
11 - 12	186	4	4	1	1	1.7	1	19	4	1	1.7	10.3	74	290
AM TOTAL	4601	60	422	91	9	8.9	126	300	32	104	2.3	18.8	723	6555
PM TOTAL	8720	57	449	56	5	4.8	114	269	18	55	.7	9.2	1957	11757
DAY TOTAL	13321	117	871	147	14	6.3	240	569	50	159	1.2	12.6	2680	18312
												2-AXLE EQUIVALENT		20254

STATE OF WASHINGTON - DEPARTMENT OF TRANSPORTATION  
 TRIP SYSTEM  
 HOURLY TRAFFIC CLASSIFICATION SUMMARY

SR 205 MP 036.27 OFF SYSTEM ID. LEG 1 DIRECTION OF TRAFFIC NORTHBOUND LANE 1 OF 2  
 COUNT IDENTIFIER HPMS COUNTER NUMBER 000724 \* DESCRIPTION: ON SR 205 S/O NE 134TH ST I/C

DATE	TIME	CARS PICKUPS	BUS MED	SINGLE UNITS HVY	4+	SINGLE UNIT %	DOUBLE UNITS 4-	5	6+	DOUBLE UNIT %	5-	TRAINS 6	7+	TRAIN %	TRUCK %	CLASS UNKNOWN	TOTAL VEHICLES
05-02-03	FRIDAY	104	1	4	4	4.1	1	5	1	7.6	1	6	1	1.0	12.7	68	197
12 -	1 -	27	2	1	1	3.8	1	14	2	6.8	2	1	2.3	12.8	89	133	
1 -	2 -														113	113	
2 -	3 -														87	87	
3 -	4 -														165	165	
4 -	5 -														310	310	
5 -	6 -														554	554	
6 -	7 -																
7 -	8 -																
8 -	9 -																
9 -	10 -																
10 -	11 -																
11 -	12 -																
12 -	1 -																
1 -	2 -																
2 -	3 -																
3 -	4 -																
4 -	5 -																
5 -	6 -																
6 -	7 -																
7 -	8 -																
8 -	9 -																
9 -	10 -																
10 -	11 -																
11 -	12 -																
AM TOTAL		131	3	5	5	.8	2	22	3	1.5	3	2	.3	2.7	1386	1559	
PM TOTAL		131	3	5	5	.8	2	22	3	1.5	3	2	.3	2.7	1386	1559	
DAY TOTAL		131	3	5	5	.8	2	22	3	1.5	3	2	.3	2.7	1386	1559	

2-AXLE EQUIVALENT 1606



STATE OF WASHINGTON - DEPARTMENT OF TRANSPORTATION  
 TRIP SYSTEM  
 HOURLY TRAFFIC CLASSIFICATION SUMMARY

SR 205 MP 036.27 OFF SYSTEM ID. LEG 1 DIRECTION OF TRAFFIC NORTHBOUND LANE 2 OF 2  
 COUNT IDENTIFIER HPMS COUNTER NUMBER 000725 \* DESCRIPTION: ON SR 205 S/O NE 134TH ST I/C

04-28-03 MONDAY AM HOURS	CARS PICKUPS	BUS	SINGLE MED	UNITS HVV	4+	SINGLE UNIT %	DOUBLE UNITS	5	6+	DOUBLE UNIT %	5-	TRAINS 6	7+	TRAIN %	TRUCK %	CLASS UNKNOWN	TOTAL VEHICLES
12 - 1	476		50	1	2	9.3	3	11	1	2.7	1	5	5	.9	12.9	3	550
11 - 2	564		42	4	1	7.5	11	7	3	2.8		3	3	.5	10.8	7	640
10 - 3	746		44	7	1	6.3	9	9	3	2.5		6	6	.7	9.5	6	831
9 - 4	898		78	5	2	8.4	6	14	3	2.2		2	2	.3	10.8	9	1017
8 - 5	932	2	70	4	2	7.5	10	7	3	1.9		1	4	.5	9.9	5	1040
7 - 6	556		35	1		5.9	5	3	1	1.3	1	1	1	.3	7.6	6	608
6 - 7	359		19			5.1	4	2	1	1.8		2	1	.8	390	1	390
5 - 8	278		19			6.2	2	5		2.3		1	1	.3	8.8	2	307
4 - 9	211		6			2.7	1	2		1.3		1	1	.4	4.4	3	226
3 - 10	97		5			5.7	1	1		.9	1	1	1	.9	7.5	5	106
2 - 11	68		1			1.4		1		1.4					2.9	1	70
1 - 12																	
AM TOTAL	5185		5	369	23	5	6.9	51	62	10	2.1	3	4	.5	9.6	45	5785
PM TOTAL	5185		5	369	23	5	6.9	51	62	10	2.1	3	4	.5	9.6	45	5785
DAY TOTAL	5185		5	369	23	5	6.9	51	62	10	2.1	3	4	.5	9.6	45	5785
																	6036

2-AXLE EQUIVALENT

STATE OF WASHINGTON - DEPARTMENT OF TRANSPORTATION  
TRIP SYSTEM  
HOURLY TRAFFIC CLASSIFICATION SUMMARY

SR 205 MP 036.27 OFF SYSTEM ID. LEG 1 DIRECTION OF TRAFFIC NORTHBOUND LANE 2 OF 2  
COUNT IDENTIFIER HPMS COUNTER NUMBER 000725 \* DESCRIPTION: ON SR 205 S/O NE 134TH ST I/C

DAY	AM TOTAL	PM TOTAL	DAY TOTAL	CARS PICKUPS	BUS	SINGLE MED	HVY	4+	SINGLE UNIT %	DOUBLE 4-	5	6+	DOUBLE UNIT %	5-	6	7+	TRAIN %	TRUCK %	CLASS UNKNOWN	TOTAL VEHICLES	
04-29-03																					
TUESDAY																					
AM HOURS				45					7.5				4.3					4.3		47	
12 - 1				34		1		1	11.1					1			2.5	10.0	2	40	
1 - 2				16		2		2	26.1									11.1		18	
2 - 3				15		2		2	11.4									34.8		23	
3 - 4				31		2		2	10.5									11.4		35	
4 - 5				129		1		1	8.6									11.2		153	
5 - 6				307		2		2	8.6									11.2		348	
6 - 7				459		1		1	7.7									9.6		519	
7 - 8				364		1		1	8.2									14.5		440	
8 - 9				349		2		2	8.4									4.1		416	
9 - 10				360		2		2	7.0									13.7		431	
10 - 11				385		1		1	8.9									13.3		459	
11 - 12						2		2												13	
PM HOURS																					
12 - 1				396		7		7	7.7									16.3		480	
1 - 2				491		24		24	7.1									10.2		550	
2 - 3				607		36		36	6.5									10.1		682	
3 - 4				734		37		37	8.0									11.6		834	
4 - 5				928		62		62	5.7									8.9		1021	
5 - 6				907		47		47	6.0									8.0		1002	
6 - 7				577		58		58	6.6									8.2		635	
7 - 8				376		37		37	4.9									8.0		410	
8 - 9				296		17		17	4.9									8.9		327	
9 - 10				259		15		15	4.5									8.7		286	
10 - 11				126		11		11	6.6									13.8		152	
11 - 12				81		8		8	3.4									5.7		87	
AM TOTAL	2494				13	199	25	6	8.3	25	59	22	3.6	2	4	19		12.8	61	2929	
PM TOTAL	5778				15	354	29	11	6.3	48	100	28	2.7	11	7	39		9.9	46	6466	
DAY TOTAL	8272				28	553	54	17	6.9	73	159	50	3.0	13	11	58	.9	10.8	107	9395	
																					10037

2-AXLE EQUIVALENT

STATE OF WASHINGTON - DEPARTMENT OF TRANSPORTATION  
TRIP SYSTEM  
HOURLY TRAFFIC CLASSIFICATION SUMMARY

SR 205 MP 036.27 OFF SYSTEM ID. LEG 1 DIRECTION OF TRAFFIC NORTHBOUND LANE 2 OF 2  
COUNT IDENTIFIER HPMS COUNTER NUMBER 000725 \* DESCRIPTION: ON SR 205 S/O NE 134TH ST I/C

DAY	CARS PICKUPS	BUS	SINGLE MED	HVY	4+	SINGLE UNIT %	DOUBLE 4-	DOUBLE 5	DOUBLE 6+	DOUBLE UNIT %	5-	TRAINS 6	TRAINS 7+	TRAIN %	TRUCK %	CLASS UNKNOWN	TOTAL VEHICLES
04-30-03	40		2			4.4	1	2		4.4			1	2.2	11.1		45
WEDNESDAY	15		1			5.0	2	1		10.0			1	5.0	20.0		20
AM HOURS	18					9.6	1	1		9.1			1	9.1	18.2		22
12 - 1	9					21.4	1	1	1	7.1	2		1	7.1	35.7		14
1 - 2	30	2	3	1	1	15.6	1	2	1	8.9			4	4.4	28.9		45
2 - 3	139		4	2	1	9.6	4	2	3	3.6			4	2.4	15.6	2	167
3 - 4	318	1	30	1	1	8.7	1	3	3	1.9			4	1.1	11.7	8	369
4 - 5	467	1	29	3	2	6.3	3	3	3	1.7		1	2	-6	8.7	8	520
5 - 6	382	4	37	3	4	9.4	4	8	4	3.6			4	.9	13.8	5	449
6 - 7	342	2	26	2	5	7.5	2	12	6	5.0		1	3	1.0	13.4	6	402
7 - 8	355	1	25	5	1	7.5	2	14	2	4.3			5	1.2	13.0	7	416
8 - 9	356	1	26	1	1	6.8	1	12	3	3.9			9	2.2	12.9	2	411
9 - 10																	
10 - 11																	
11 - 12																	
PM HOURS																	
12 - 1	382	3	33	3	1	8.3	4	11	1	3.6			6	1.3	13.2	6	447
1 - 2	521	1	27	3	1	5.7	6	7	4	2.9			2	.3	9.0	5	578
2 - 3	605	1	40	5	1	6.9	7	11	2	2.9		2	6	1.2	10.9	5	685
3 - 4	717	1	48	5	2	6.7	10	10	3	2.5			4	.5	9.7	9	804
4 - 5	964	2	48	6	2	5.6	5	4	3	1.2	1		3	-6	7.3	3	1043
5 - 6	967	2	57	5	1	6.1	13	5	2	1.7		1	2	.3	8.1	3	1055
6 - 7	638	1	37	1	1	5.7	6	2	2	1.4			2	.3	7.5	6	696
7 - 8	445	2	21	1	1	5.0	2	5	2	1.9			2	.4	7.3	1	481
8 - 9	323		21			5.9	1	7	2	2.5	1		1	.3	8.7	3	357
9 - 10	229		12		1	5.2	1	4	2	2.0	1		1	.4	7.6	1	249
10 - 11	151		5			3.0		7		4.3				.6	7.9		164
11 - 12	106		3			2.7		2		1.8					4.5		111
AM TOTAL	2471	12	197	16	6	7.8	21	60	22	3.6	2	4	34	1.4	12.8	41	2880
PM TOTAL	6048	12	352	29	6	6.0	54	75	16	2.2	4	5	27	.5	8.7	42	6670
DAY TOTAL	8519	24	549	45	6	6.5	75	135	38	2.6	6	9	61	.8	9.9	83	9550

2-AXLE EQUIVALENT 10112

STATE OF WASHINGTON - DEPARTMENT OF TRANSPORTATION  
 TRIP SYSTEM  
 HOURLY TRAFFIC CLASSIFICATION SUMMARY

SR 205 MP 036.27 OFF SYSTEM ID. LEG 1 DIRECTION OF TRAFFIC NORTHBOUND LANE 2 OF 2  
 COUNT IDENTIFIER HPMS COUNTER NUMBER 000725 \* DESCRIPTION: ON SR 205 S/O NE 134TH ST I/C

DAY	CARS PICKUPS	BUS	SINGLE MED	HVY	4+	SINGLE UNIT %	DOUBLE 4-	DOUBLE 5	DOUBLE 6+	DOUBLE UNIT %	5- TRAINS	6	7+	TRAIN %	TRUCK %	CLASS UNKNOWN	TOTAL VEHICLES
05-01-03	51		2	1		5.3		2		3.5	1			1.8	10.5	2	57
THURSDAY	22		1			3.1		1		3.1		1		4.3	6.3	2	24
AM HOURS	30		4			17.4		1		4.3		1		4.3	26.1	2	32
1	15		1			4.7		2		4.7	1			2.3	11.6	2	23
2	36	1	1			7.7		1		1.3			1	0.6	9.7	3	43
3	137	3	27			8.1	3	4	1	1.9			1	10.0	10.0	2	155
4	511	1	20		1	5.1	3	12	2	2.7	1		1	8.1	8.1	2	371
5	387	3	30			7.2	6	11	5	4.3			1	12.1	12.1	4	566
6	393	2	27			6.9	4	21	3	6.5			2	13.8	13.8	4	445
7	383	2	22			5.8	10	5	3	4.2			2	7	10.6	3	463
8	420	2	24			5.9	9	8	4	4.4			4	11.2	11.2	1	432
9																	474
10																	
11																	
12																	
PM HOURS	464	3	35	7		8.4	5	8	6	3.6			5	9	12.9	1	534
1	560	4	35	1		6.5	5	4	4	2.1			5	9.4	9.4	2	620
2	619	1	31	6		5.5	9	9	3	3.0			4	9.1	9.1	10	692
3	805	4	44	4		5.5	6	7	6	2.2			4	8.1	8.1	4	880
4	953	3	56	5	1	6.2	16	10	2	2.7	1		2	9.1	9.1	3	1052
5	1002	2	51	3		5.1	10	16	2	2.3			4	7.8	7.8	4	1093
6	649		35	1		5.1	5	10	2	2.4			2	7.8	7.8	4	708
7	460		36	1		7.5	1	1	1	4.4			1	8.3	8.3	3	505
8	337		16	1	1	4.6	1	3	2	1.6	3		2	6.1	6.1	3	368
9	276		5			1.7	1	6	2	3.1	2		1	1.4	1.4	1	295
10	149	1	11			8.3	1	4	2	2.4	1		1	11.8	11.8	1	169
11	101		3			2.8		2	1	3.7			2	6.5	6.5	1	108
12																	
AM TOTAL	2717	14	169	14	1	6.4	35	68	15	3.8	2	3	13	6	10.8	34	3085
PM TOTAL	6375	14	358	30	3	5.8	57	80	30	2.4	7	2	31	6	8.7	37	7024
DAY TOTAL	9092	28	527	44	4	6.0	92	148	45	2.8	9	5	44	6	9.4	71	10109

2-AXLE EQUIVALENT 10673

STATE OF WASHINGTON - DEPARTMENT OF TRANSPORTATION  
TRIP SYSTEM  
HOURLY TRAFFIC CLASSIFICATION SUMMARY

SR 205 MP 036.27 OFF SYSTEM ID. LEG 1 DIRECTION OF TRAFFIC NORTHBOUND LANE 2 OF 2  
COUNT IDENTIFIER HPMS COUNTER NUMBER 000725 \* DESCRIPTION: ON SR 205 S/O NE 134TH ST I/C

05-02-03	CARS PICKUPS	BUS	SINGLE MED	UNITS HVY	4+	SINGLE UNIT %	DOUBLE 4-	DOUBLE 5	DOUBLE 6+	DOUBLE UNIT %	5-	TRAINS 6	TRAINS 7+	TRAIN %	TRUCK %	CLASS UNKNOWN	TOTAL VEHICLES
FRIDAY	50	2	3	1		10.2	2	2	1	3.4					13.6	1	59
AM HOURS	18		2			12.5				12.5		1	1	5.9	25.0		24
1 - 1	25	1				2.9	1	5	1	17.6				7.4	26.5		34
2 - 2	16					7.4	3	3	1	18.5	1		1	7.4	33.3	2	27
3 - 3	37					6.7	3	2		6.7			1	2.2	15.6	1	45
4 - 4	135					6.5	4	2	2	4.5	1			.6	11.7	3	154
5 - 5	302					6.9	4	2	2	2.4					9.3	2	355
6 - 6																	
7 - 7																	
8 - 8																	
9 - 9																	
10 - 10																	
11 - 11																	
12 - 12																	
PM HOURS																	
1 - 1																	
2 - 2																	
3 - 3																	
4 - 4																	
5 - 5																	
6 - 6																	
7 - 7																	
8 - 8																	
9 - 9																	
10 - 10																	
11 - 11																	
12 - 12																	
AM TOTAL	581	3	43	2		7.1	15	15	4	5.0	2	1	3	.9	13.0	9	678
PM TOTAL	581	3	43	2		7.1	15	15	4	5.0	2	1	3	.9	13.0	9	678
DAY TOTAL	581	3	43	2		7.1	15	15	4	5.0	2	1	3	.9	13.0	9	678

2-AXLE EQUIVALENT 737

STATE OF WASHINGTON - DEPARTMENT OF TRANSPORTATION  
TRIP SYSTEM  
HOURLY TRAFFIC CLASSIFICATION SUMMARY

SR 205 MP 036.27 OFF SYSTEM ID. LEG 1 DIRECTION OF TRAFFIC NORTHBOUND LANE 12 OF 2  
COUNT IDENTIFIER HPMS COUNTER NUMBER 000725 \* DESCRIPTION: ON SR 205 S/O NE 134TH ST I/C

04-28-03	CARS PICKUPS	BUS	SINGLE MED	HVY	4+	SINGLE UNIT %	DOUBLE 4-	5	6+	DOUBLE UNIT %	5-	6	7+	TRAIN %	TRUCK %	CLASS UNKNOWN	TOTAL VEHICLES	
MONDAY	1329	13	137	15	4	10.2	22	51	5	4.8	2	13	2	.9	15.9	31	1618	
AM HOURS	1537	12	112	12	3	7.7	26	43	9	4.3	2	21	2	1.2	13.2	33	1809	
12 - 1	1792	11	123	24	3	7.7	25	40	13	3.8	4	14	4	.9	12.4	31	2080	
1 - 2	2100	11	179	22	3	8.9	23	38	10	2.9	1	10	2	.5	12.3	28	2427	
2 - 3	2241	7	151	15	4	7.0	26	32	2	2.7	2	8	2	.4	10.1	20	2515	
3 - 4	1549	5	94	8	4	6.2	8	26	2	2.1	1	2	2	.5	8.8	17	1717	
4 - 5	1102	7	77	8	3	7.2	6	25	2	2.7	1	4	4	.7	10.6	11	1245	
5 - 6	868	3	55	1	1	6.0	7	23	3	3.4	3	5	5	1.1	10.5	9	980	
6 - 7	737	4	30	4	4	4.7	4	11	2	2.1	3	3	2	.9	7.7	6	805	
7 - 8	367	1	19	2	2	5.1	4	20	2	6.1	3	2	2	1.2	12.4	9	429	
8 - 9	252	1	14	4	4	5.9	20	20	2	7.2	2	1	2	1.6	14.8	7	304	
9 - 10																		
10 - 11																		
11 - 12																		
PM HOURS																		
12 - 1																		
1 - 2																		
2 - 3																		
3 - 4																		
4 - 5																		
5 - 6																		
6 - 7																		
7 - 8																		
8 - 9																		
9 - 10																		
10 - 11																		
11 - 12																		
AM TOTAL	13874	72	991	115	14	7.5	151	329	59	3.4	14	21	87	.8	11.6	202	15929	
PM TOTAL	13874	72	991	115	14	7.5	151	329	59	3.4	14	21	87	.8	11.6	202	15929	
DAY TOTAL	13874	72	991	115	14	7.5	151	329	59	3.4	14	21	87	.8	11.6	202	17044	

2-AXLE EQUIVALENT

SR 205 MP 036.27 OFF SYSTEM ID. LEG 1 DIRECTION OF TRAFFIC NORTHBOUND LANE 12 OF 2  
COUNT IDENTIFIER HPMS COUNTER NUMBER 000725 \* DESCRIPTION: ON SR 205 S/O NE 134TH ST I/C

DAY	CARS PICKUPS	BUS MED	SINGLE UNIT HVY	DOUBLE UNIT 4+	SINGLE UNIT %	DOUBLE UNIT %	5-6	TRAINS 6+	TRAINS 7+	TRAIN %	TRUCK %	CLASS UNKNOWN	TOTAL VEHICLES
04-29-03													
TUESDAY													
AM HOURS													
12 - 1	174	2	8	4	8.0	19	5	1	2	2.7	19.2	7	224
1 - 2	97	2	5	1	10.1	12	1	1	2	3.6	23.7	9	139
2 - 3	61	3	6	2	12.7	9	2	2	1	4.9	31.4	9	102
3 - 4	58	2	4	5	8.5	8	3	3	2	3.1	25.4	39	130
4 - 5	93	1	6	3	7.6	13	5	1	1	12.3	20.5	43	171
5 - 6	335	5	2	1	5.9	6	4	1	3	0.6	20.5	107	495
6 - 7	730	8	56	6	6.7	7	10	1	10	0.8	10.7	201	1052
7 - 8	1028	8	75	1	6.1	31	4	1	7	1.0	11.5	324	1504
8 - 9	1002	13	84	8	7.4	25	34	21	7	0.6	10.1	240	1437
9 - 10	1010	19	99	4	11.4	51	21	8	24	5.9	13.6	31	1289
10 - 11	1044	11	100	3	10.6	19	48	22	12	1.9	19.2	38	1327
11 - 12	1108	16	110	2	10.5	26	41	23	18	1.2	18.5	25	1387
PM HOURS													
12 - 1	1213	20	96	13	9.1	30	36	15	33	5.4	16.8	31	1496
1 - 2	1366	7	118	15	8.8	32	38	13	24	5.0	15.4	27	1647
2 - 3	1584	10	109	20	7.6	23	41	19	20	4.5	15.1	27	1864
3 - 4	1812	15	145	22	8.7	27	48	17	14	4.3	13.8	22	2128
4 - 5	2185	8	143	20	7.3	31	38	14	12	3.3	11.2	24	2489
5 - 6	2264	9	121	8	5.5	28	42	7	10	3.1	9.1	16	2507
6 - 7	1555	9	96	1	6.4	23	23	6	7	3.0	9.8	25	1752
7 - 8	1107	1	60	6	5.6	7	30	5	6	3.4	9.9	7	1237
8 - 9	898	3	69	6	7.6	3	22	2	9	2.6	12.1	13	1036
9 - 10	821	4	44	5	5.9	3	14	2	3	2.1	9.0	11	914
10 - 11	411	2	24	6	6.2	4	29	4	4	7.1	15.8	25	518
11 - 12	256	1	11	2	4.1	1	11	2	1	4.1	11.3	49	344
AM TOTAL	6740	90	574	118	8.6	122	306	103	87	5.7	15.6	1073	9257
PM TOTAL	15472	87	1036	130	7.2	212	372	106	143	3.8	12.1	285	17932
DAY TOTAL	22212	177	1610	248	7.7	334	678	209	230	4.5	13.3	1358	27189

2-AXLE EQUIVALENT 29851

SR 205 MP 036.27

OFF SYSTEM ID.

LEG 1

DIRECTION OF TRAFFIC NORTHBOUND

LANE 12 OF 2

COUNT IDENTIFIER HPMs COUNTER NUMBER 000725 \* DESCRIPTION: ON SR 205 S/O NE 134TH ST I/C

DAY	TOTAL	CARS PICKUPS	BUS	SINGLE MED	SINGLE HVY	4+	SINGLE UNIT %		DOUBLE UNITS		DOUBLE UNIT %		TRAINS			TRAIN %	TRUCK %	CLASS UNKNOWN	TOTAL VEHICLES	
							4-	5	6+	5-	6	7+								
04-30-03																				
WEDNESDAY																				
AM HOURS																				
12 -	1	129		6			3.6	1	10	1	4.9		1	1	1	2.7	11.2	70	224	
1 -	2	52		2			1.6	2	15	1	4.3		2	1	3	3.2	19.0	50	126	
2 -	3	59		2			5.6	2	10	5	11.9		3	1	3	3.5	21.0	54	143	
3 -	4	41	2	5			8.0	1	12	6	15.2		3	2	4	4.8	28.0	49	125	
4 -	5	80	3	8			8.0	5	11	2	9.6		3	1	2	3.2	20.9	68	187	
5 -	6	251	4	21			5.9	6	14	6	4.0		1	1	6	1.2	11.1	189	495	
6 -	7	493	4	46			5.3	5	15	6	2.6		2	2	6	.6	8.5	425	1003	
7 -	8	803	5	46			4.4	6	16	6	2.0		2	6	6	.6	6.9	521	1422	
8 -	9	662	8	55			5.6	8	29	5	3.2		1	7	7	.5	9.3	531	1315	
9 -	10	595	7	39			5.0	7	29	6	3.5		1	6	6	.6	9.1	505	1210	
10 -	11																			
11 -	12	1134	13	96			9.3	21	57	13	6.5		1	18	18	1.4	17.2	23	1397	
PM HOURS																				
12 -	1	1132	20	103			9.9	26	63	13	7.2		1	22	22	1.6	18.7	23	1421	
1 -	2	1391	13	102			7.9	19	44	17	4.9		2	9	9	.7	13.5	27	1639	
2 -	3	1565	10	122			8.0	26	51	11	4.8		2	15	15	.9	13.7	19	1835	
3 -	4	1781	12	142			8.1	32	50	7	4.3		1	14	14	.7	13.1	22	2074	
4 -	5	2214	8	130			6.4	27	46	11	3.4		3	8	8	.5	9.3	22	2488	
5 -	6	2298	7	130			6.0	29	34	7	2.7		2	11	11	.5	9.3	22	2558	
6 -	7	1656	3	95			5.9	18	31	6	3.0		2	6	6	.5	9.4	18	1848	
7 -	8	1230	4	70			6.1	11	30	5	3.3		1	10	10	.9	10.4	14	1388	
8 -	9	998	4	63			6.4	3	28	4	3.1		1	6	6	1.7	11.2	12	1137	
9 -	10	837	3	28			3.7	5	20	4	2.8		8	4	4	1.5	8.1	3	914	
10 -	11	521	2	23			4.9	2	37	4	7.1		3	6	6	1.2	13.2	6	607	
11 -	12	365	3	15			4.9	3	17	3	5.4		4	2	2	1.6	11.9	11	427	
AM TOTAL	4299	48	326	62	15	17	5.9	64	218	50	4.3		9	9	62	1.0	11.3	2485	7647	
PM TOTAL	15988	97	1023	114	32	32	6.8	201	451	89	4.0		35	13	113	.9	11.7	195	18336	
DAY TOTAL	20287	145	1349	176	32	32	6.6	265	669	139	4.1		44	22	175	.9	11.6	2680	25983	
																			2-AXLE EQUIVALENT	28197



SR 205 MP 036.27 OFF SYSTEM ID. COUNTER NUMBER 000725 \* DESCRIPTION: ON SR 205 S/O NE 134TH ST I/C LANE 12 OF 2

05-01-03 THURSDAY AM HOURS	CARS PICKUPS	BUS	SINGLE MED	UNITS HVV	4+	SINGLE		DOUBLE			TRAIN			TRUCK		CLASS UNKNOWN	TOTAL VEHICLES
						UNIT %	4-	5-	6	7+	TRAIN %	TRUCK %					
12 - 1	198	2	9	9		7.1	2	17	8	2	5	5.9	20.8	4	255		
1 - 2	103	1	3	3		3.3	2	20	8	2	4	9.2	28.8	6	153		
2 - 3	94	1	3	3		4.6	1	25	5	5	7	8.5	33.3	8	153		
3 - 4	70	1	3	6		11.5	3	17	7	2	4	6.2	38.5	10	130		
4 - 5	126	1	12	5		9.3	8	20	2	3	3	3.1	27.5	14	193		
5 - 6	396	8	41	3		10.0	10	22	2	2	10	2.9	20.7	15	518		
6 - 7	854	15	87	10		10.0	13	32	3	3	10	2.9	20.7	15	518		
7 - 8	1256	10	85	20	7	8.0	18	39	6	6	13	1.6	17.0	22	1056		
8 - 9	1093	6	86	11	1	7.2	25	52	12	2	19	1.5	12.8	79	1531		
9 - 10	1020	12	99	13	1	8.9	25	53	14	1	19	1.1	14.9	132	1439		
10 - 11	990	8	82	15	1	7.9	28	38	14	3	14	1.1	16.5	147	1350		
11 - 12	1118	10	76	10	1	6.6	28	33	13	3	16	1.2	14.7	161	1350		
PM HOURS																	
12 - 1	1208	9	94	13	1	7.5	19	33	12	1	13	.9	12.5	153	1555		
1 - 2	1321	18	88	6		6.6	25	29	8		11	.7	11.0	178	1685		
2 - 3	1532	10	88	17	1	5.1	24	43	10	1	11	.3	10.4	173	1903		
3 - 4	1805	13	95	11	1	5.5	19	34	14		5	.6	9.2	179	2184		
4 - 5	2022	6	124	17	1	6.0	29	30	7	3	6	.4	9.1	218	2463		
5 - 6	2183	5	108	11	1	4.9	18	42	7	1	8	.5	7.9	183	2570		
6 - 7	1547	6	71	2	2	4.3	14	27	4	3	10	.6	7.3	190	1874		
7 - 8	1147	1	65	3	1	4.9	11	24	4	1	7	.8	8.4	169	1436		
8 - 9	894	2	36	2		3.4	4	22	7	2	4	.9	7.1	192	1169		
9 - 10	741	1	14	1		1.5	3	20	5	4	5	1.0	5.4	180	974		
10 - 11	408	1	17	2		3.7	3	24	3	2	3	1.1	10.0	105	570		
11 - 12	287	1	7	1	1	2.0	2	21	1	4	1	1.3	9.3	74	398		
AM TOTAL	7318	74	591	105	10	8.1	161	368	89	34	117	1.7	16.2	757	9640		
PM TOTAL	15095	71	807	86	8	5.2	171	349	82	25	86	.6	9.0	1994	18781		
DAY TOTAL	22413	145	1398	191	18	6.2	332	717	171	59	203	1.0	11.5	2751	28421		
															30926		

2-AXLE EQUIVALENT

SR 205 MP 036.27 OFF SYSTEM ID. LEG 1 DIRECTION OF TRAFFIC NORTHBOUND LANE 12 OF 2  
COUNT IDENTIFIER HPMS COUNTER NUMBER 000725 \* DESCRIPTION: ON SR 205 S/O NE 134TH ST 1/C

05-02-03	CARS PICKUPS	BUS	SINGLE MED	UNITS HVY	4+	SINGLE UNIT %	DOUBLE UNITS	6+	DOUBLE UNIT %	5-	TRAINS	7+	TRAIN %	TRUCK %	CLASS UNKNOWN	TOTAL VEHICLES
FRIDAY	154	3	6	5	4	5.5	1	16	6.6	1	6	7+	.8	12.9	69	256
AM HOURS	45	2	4	2	5.1	3	9	7.6	2	2	1	1	1.9	14.6	89	157
12 - 1	25	1			5.1	3	5	4.1	1	1	1	1	1.4	6.1	113	147
1 - 2	16				1.8	1	3	4.4	1	1	1	1	1.8	7.9	89	114
2 - 3	37				1.4	3	5	1.4	1	1	1	1	.5	3.3	166	210
3 - 4	16				2.2	2	2	1.5	1	1	1	1	.2	3.9	313	464
4 - 5	133				2.6	4	2	.9						3.5	556	889
5 - 6	302															
6 - 7																
7 - 8																
8 - 9																
9 - 10																
10 - 11																
11 - 12																
PM HOURS																
12 - 1																
1 - 2																
2 - 3																
3 - 4																
4 - 5																
5 - 6																
6 - 7																
7 - 8																
8 - 9																
9 - 10																
10 - 11																
11 - 12																
AM TOTAL	712	6	48	7		2.7	17	37	2.6	5	1	5	.5	5.8	1395	2237
PM TOTAL	712	6	48	7		2.7	17	37	2.6	5	1	5	.5	5.8	1395	2237
DAY TOTAL	712	6	48	7		2.7	17	37	2.6	5	1	5	.5	5.8	1395	2237

04-28-03 THRU 05-02-03

AVERAGE WEEKDAY CLASSIFICATION VOLUMES *****																	
AVG WEEKDAY	CARS PICKUPS	BUS	SINGLE UNITS	4+	SINGLE UNIT %	DOUBLE UNITS	6+	DOUBLE UNIT %	5-	TRAINS	7+	TRAIN %	TRUCK %	CLASS UNKNOWN	TOTAL VEHICLES		
VOLUME	22313	161	1504	220	34	6.9	333	698	190	4.4	52	31	217	1.1	12.4	2055	27805
TOTAL HOURS FOR COUNT	89																30395
2 DAYS																	
AVG WEEKDAY VOL	27805	X	SEASONAL ADJ.	FACTOR	0.9600	=	ESTIMATED	AVG	DAILY	TRAFFIC	26693						

SR 205 MP 036.27 OFF SYSTEM ID. LEG 1 DIRECTION OF TRAFFIC BOTH WAYS LANE ALL OF  
 COUNT IDENTIFIER HPMS COUNTER NUMBER 000725 DESCRIPTION: ON SR 205 S/O NE 134TH ST I/C

DAY	AM	PM	TOTAL	CARS PICKUPS	BUS	SINGLE MED	HYV	4+	SINGLE UNIT %	DOUBLE 4-	5	6+	DOUBLE UNIT %	5-	TRAINS 6	7+	TRAIN %	TRUCK %	CLASS UNKNOWN	TOTAL VEHICLES	
04-28-03	MONDAY																				
12	1	1	2	2557	23	209	29	1	8.6	44	116	17	5.8	1	3	26	1.0	15.3	31	3057	
11	2	3	5	2852	26	193	25	9	7.5	52	108	24	5.5	1	3	45	1.4	14.4	33	3370	
10	3	4	7	3356	24	241	33	4	7.7	56	92	27	4.5	1	6	33	1.0	13.2	31	3904	
9	4	5	9	3764	21	279	29	4	7.7	52	110	24	4.3	2	3	24	.7	12.6	28	4340	
8	5	6	11	3900	15	248	24	5	6.6	51	110	14	4.0	4	4	15	.4	11.0	20	4406	
7	6	7	13	2796	11	151	9	1	5.6	16	66	5	2.8	2	1	16	.6	9.0	17	3091	
6	7	8	15	1955	12	119	9		6.4	13	51	7	3.2	1	4	15	.9	10.5	11	2197	
5	8	9	17	1542	3	84	1		5.1	13	47	12	4.2	4	3	13	1.2	10.4	9	1731	
4	9	10	19	1254	6	50	2		4.4	7	27	4	2.8	4	4	7	1.5	8.6	6	1379	
3	10	11	21	720	3	34	4		4.7	8	38	5	6.1	9	3	13	2.3	13.0	9	838	
2	11	12	23	462	3	22	4		4.6	3	39	8	8.9	5	5	8	3.2	16.7	7	563	
AM TOTAL	25158	144	1630	169	24	6.8	315	804	147	4.4	29	39	215	1.0	12.2	202	28876				
PM TOTAL	25158	144	1630	169	24	6.8	315	804	147	4.4	29	39	215	1.0	12.2	202	28876				
DAY TOTAL	25158	144	1630	169	24	6.8	315	804	147	4.4	29	39	215	1.0	12.2	202	28876				

2-AXLE EQUIVALENT 31459

STATE OF WASHINGTON - DEPARTMENT OF TRANSPORTATION  
TRIP SYSTEM  
HOURLY TRAFFIC CLASSIFICATION SUMMARY

SR 205 MP 036.27 OFF SYSTEM ID. LEG 1 DIRECTION OF TRAFFIC BOTH WAYS LANE ALL OF  
COUNT IDENTIFIER HPMS COUNTER NUMBER 000725 DESCRIPTION: ON SR 205 S/O NE 134TH ST I/C

DAY	AM TOTAL	PM TOTAL	CARS PICKUPS	BUS	SINGLE MED	UNITS HVY	4+	SINGLE UNIT %	DOUBLE UNITS	6+	DOUBLE UNIT %	5-	TRAINS	7+	TRAIN %	TRUCK %	CLASS UNKNOWN	TOTAL VEHICLES	
04-29-03																			
TUESDAY																			
AM HOURS																			
12 - 1			323	6	12	9		6.3	1	7	10.5	12	5	8	5.9	22.7	7	427	
1 - 2			204	3	7	5	2	5.9	37	4	13.5	8	4	8	6.9	26.3	9	289	
2 - 3			147	4	8	6	3	8.0	25	8	15.9	5	3	4	7.1	31.0	9	226	
3 - 4			172	2	11	7	1	7.0	23	10	14.3	9	1	4	4.9	26.2	39	286	
4 - 5			291	6	19	8		7.3	48	10	14.5	1	4	12	3.8	25.6	43	449	
5 - 6			875	8	48	3	1	5.3	77	10	5.3	2	4	15	1.9	12.5	107	1122	
6 - 7			1979	22	149	10	3	6.1	119	7	4.0	3	4	22	1.0	10.1	201	2490	
7 - 8			1028	8	75	8	1	7.4	74	9	3.4	1	1	7	.6	10.1	324	1504	
8 - 9			1002	13	84	5	4	7.4	30	21	5.6		2	34	.6	13.6	240	1437	
9 - 10			1839	22	163	36	3	9.9	82	20	5.6		4	32	1.6	17.1	31	2256	
10 - 11			2215	25	200	34	4	9.7	91	45	6.3		4	32	1.3	17.3	38	2725	
11 - 12			2317	24	193	22	2	8.5	43	41	7.0	2	2	36	1.4	17.0	25	2821	
PM HOURS																			
12 - 1			2406	31	191	26	9	8.7	54	39	6.8		4	50	1.8	17.4	31	2950	
1 - 2			2359	18	193	33	7	8.1	58	40	6.5	1	4	47	1.6	16.2	27	3086	
2 - 3			3004	19	198	32	3	7.1	46	43	5.8	1	4	41	1.3	14.2	35	3544	
3 - 4			3435	22	256	32	6	7.9	58	36	5.1		4	32	.9	13.9	22	4014	
4 - 5			3839	20	249	27	11	7.0	51	24	3.8	3	4	28	.8	11.6	24	4371	
5 - 6			3957	21	214	15	3	5.7	44	15	3.4	3	1	26	.7	9.8	16	4405	
6 - 7			2810	20	158	10	4	6.1	90	12	3.8	3	1	14	.5	10.3	25	3162	
7 - 8			2083	6	113	6	2	5.5	73	6	3.8	4	3	15	.9	10.2	7	2527	
8 - 9			1607	7	101	8	1	6.4	65	6	2.9	8	1	14	1.5	10.8	13	1816	
9 - 10			1379	7	68	5	1	5.2	42	6	2.9	10	4	11	1.6	10.3	11	1550	
10 - 11			750	6	39	5	6	5.5	41	8	8.5	13	3	8	2.6	16.6	25	929	
11 - 12			459	2	19	2		3.9	6	10	6.9	14	4	6	4.0	14.8	49	596	
AM TOTAL	12392			143	969	153	20	8.0	193	189	6.3	43	32	193	1.7	16.0	1073	16032	
PM TOTAL	28288			179	1799	202	46	6.8	382	247	4.8	58	38	292	1.2	12.8	285	32750	
DAY TOTAL	40680			322	2768	355	66	7.2	575	436	5.3	101	70	485	1.3	13.8	1358	48782	
																			54326

2-AXLE EQUIVALENT

STATE OF WASHINGTON - DEPARTMENT OF TRANSPORTATION  
 TRIP SYSTEM  
 HOURLY TRAFFIC CLASSIFICATION SUMMARY

DATE 06/04/03  
 TIME 06:27:19  
 PAGE 33

SR 205 MP 036.27 OFF SYSTEM ID. LEG 1 DIRECTION OF TRAFFIC BOTH WAYS LANE ALL OF  
 COUNT IDENTIFIER HPMS COUNTER NUMBER 000725 DESCRIPTION: ON SR 205 S/O NE 134TH ST I/C

DAY	PM	AM	TOTAL	CARS PICKUPS	BUS	SINGLE MED	UNITS HVY	4+	SINGLE UNIT %	DOUBLE UNITS 4-	DOUBLE UNITS 5	DOUBLE UNITS 6+	DOUBLE UNIT %	5-	TRAINS 6	TRAINS 7+	TRAIN %	TRUCK %	CLASS UNKNOWN	TOTAL VEHICLES	
04-30-03	WEDNESDAY																				
12	-	1		285	3	12	2	26	4.1	4	5	4	6.7	11	1	6	4.3	15.1	70	418	
1	-	2		157	1	5	4	45	2.4	4	2	4	18.5	9	4	4	6.6	27.6	50	286	
2	-	3		139	2	6	3	22	4.8	3	4	8	5.2	2	4	7	5.6	23.1	54	251	
3	-	4		136	4	10	4	42	5.8	4	4	9	13.1	2	4	10	7.2	33.0	49	276	
4	-	5		258	6	21	6	37	7.7	11	3	8	12.8	8	6	9	5.2	25.7	68	439	
5	-	6		771	11	54	7	44	6.4	11	4	8	5.6	2	4	19	2.2	14.3	189	1120	
6	-	7		1927	11	153	7	58	6.5	20	5	22	3.8	2	4	26	1.1	11.4	425	2654	
7	-	8		2952	11	149	20	59	4.8	27	5	23	2.9	1	5	28	.9	8.6	521	3799	
8	-	9		2361	18	152	11	85	5.8	28	8	21	4.1	1	2	31	1.0	10.9	531	3247	
9	-	10		1927	19	135	28	76	6.7	23	7	21	4.3	1	2	29	1.2	12.2	505	2771	
10	-	11																			
11	-	12		2425	23	177	24	121	7.9	41	1	31	6.6		2	39	1.4	15.9		23	2911
1	-	1		2416	32	202	25	136	8.8	45	1	29	7.1	4	4	47	1.7	17.7		23	2962
2	-	2		2646	26	179	23	118	7.4	42	2	25	6.0		3	19	1.7	14.0		27	3109
3	-	3		2934	19	223	21	134	7.7	54	1	27	6.2	2	4	35	1.2	15.0		19	3476
4	-	4		3443	22	229	21	107	6.9	50	1	22	4.5	1	3	38	1.0	12.5		22	3960
5	-	5		3797	17	233	26	90	5.7	57	2	23	3.9	2	5	19	.6	11.1		18	4290
6	-	6		4194	15	225	23	85	5.4	57	2	23	3.3	2	5	26	.9	9.6		18	4671
7	-	7		3037	19	157	6	66	5.5	32	1	14	3.2	2	4	23	.8	9.6		14	3380
8	-	8		2258	18	117	4	50	5.5	22	1	9	3.6	2	3	13	.7	10.9		12	2513
9	-	9		1848	5	104	3	54	5.6	15	1	8	4.5	8	3	24	1.5	9.7		3	2088
10	-	10		1470	5	51	3	51	3.7	13	1	8	4.5	8	3	13	1.5	9.7		3	1631
11	-	11		917	5	38	4	63	4.4	9	1	7	7.7	13	5	9	2.3	14.5		6	1079
12	-	12		592	4	23	5	43	4.5	7	1	7	8.0	15	5	4	3.4	15.8		11	716
AM TOTAL			13338	109	874	112	23	174	6.2	402	615	155	5.2	42	37	208	1.6	12.9	2485	18172	
PM TOTAL			29552	187	1781	168	24	402	6.4	997	997	197	4.7	63	39	270	1.1	12.2	195	33875	
DAY TOTAL			42890	296	2655	280	47	576	6.3	1612	352	352	4.9	105	76	478	1.3	12.4	2680	52047	

2-AXLE EQUIVALENT

STATE OF WASHINGTON - DEPARTMENT OF TRANSPORTATION  
TRIP SYSTEM  
HOURLY TRAFFIC CLASSIFICATION SUMMARY

SR 205 MP 036.27 OFF SYSTEM ID. LEG 1 DIRECTION OF TRAFFIC BOTH WAYS LANE ALL OF  
COUNT IDENTIFIER HPMS COUNTER NUMBER 000725 DESCRIPTION: ON SR 205 S/O NE 134TH ST I/C

05-01-03 THURSDAY AM HOURS	CARS PICKUPS	BUS	SINGLE MED	SINGLE HVY	4+	SINGLE UNIT %	DOUBLE UNITS	DOUBLE UNIT %	5-	6	7+	TRAIN %	TRUCK %	CLASS UNKNOWN	TOTAL VEHICLES		
																21	165
12 - 1	2529	21	165	23	1	6.8	49	96	26	5.5	2	3	29	1.0	13.3	153	3095
1 - 2	2634	28	191	19	2	7.4	52	90	21	5.0	1	2	30	1.0	13.5	178	3249
2 - 3	2971	22	185	33	4	6.8	59	106	24	5.3	2	2	20	.6	12.7	173	3600
3 - 4	3459	29	218	17	7	6.6	56	95	29	4.4	1	7	29	.9	11.8	179	4126
4 - 5	3854	17	237	23	5	6.2	53	99	15	3.7	2	2	27	.7	10.6	183	4534
5 - 6	3964	13	201	16	3	5.1	38	91	12	3.1	5	5	18	.6	8.8	183	4547
6 - 7	2942	19	136	3	4	4.7	35	55	11	3.0	2	2	20	.9	9.3	190	3416
7 - 8	2152	7	129	3	3	5.6	23	53	5	3.2	5	5	17	.9	8.3	169	2567
8 - 9	1737	8	72	4	4	4.0	14	42	10	3.1	2	2	11	1.3	9.6	192	2098
9 - 10	1496	3	43	3	3	2.8	11	37	6	3.2	2	2	12	1.3	7.3	180	1808
10 - 11	840	7	34	3	1	4.2	9	53	8	6.5	6	6	12	2.2	12.8	105	1084
11 - 12	577	2	19	1	1	3.0	7	38	3	6.5	1	1	9	2.8	12.3	74	742
AM TOTAL	17553	145	1199	161	20	7.1	315	783	186	6.0	75	33	275	1.8	14.8	757	21502
PM TOTAL	29135	176	1630	148	31	5.7	406	855	174	4.1	51	32	234	.9	10.7	1994	34866
DAY TOTAL	46688	321	2829	309	51	6.2	721	1638	360	4.8	126	65	509	1.2	12.3	2751	56368

2-AXLE EQUIVALENT

STATE OF WASHINGTON - DEPARTMENT OF TRANSPORTATION  
TRIP SYSTEM  
HOURLY TRAFFIC CLASSIFICATION SUMMARY

SR 205 MP 036.27 OFF SYSTEM ID. LEG 1 DIRECTION OF TRAFFIC BOTH WAYS LANE ALL OF  
COUNT IDENTIFIER HPMS COUNTER NUMBER 000725 DESCRIPTION: ON SR 205 S/O NE 134TH ST I/C

05-02-03	CARS PICKUPS	BUS	SINGLE MED	HVY	4+	SINGLE UNIT %	DOUBLE UNITS	DOUBLE UNIT %	5-	6	7+	TRAIN %	TRUCK %	CLASS UNKNOWN	TOTAL VEHICLES
FRIDAY	331	6	16	8	1	6.3	4	5	10	1	7	3.7	18.4	69	490
AM HOURS	134	4	7	2		4.5	7	25	9	2	6	5.9	22.3	89	287
1 - 2	119	1	4	4		1.7	6	23	7	5	4	5.6	19.2	113	287
2 - 3	137	1	4	1		2.9	3	26	4	2	6	3.6	17.8	89	275
3 - 4	226	2	6	2		3.6	9	19	5	2	16	4.9	16.6	166	470
4 - 5	644	2	40	2		4.1	13	38	2	2	9	5.7	11.0	313	1075
5 - 6	1256	8	125	1	2	6.7	13	27	3	2	15	1.0	10.1	556	2015
6 - 7															
7 - 8															
8 - 9															
9 - 10															
10 - 11															
11 - 12															
AM TOTAL	2847	25	212	14	3	5.2	55	190	41	14	63	2.4	13.4	1395	4899
PM TOTAL	2847	25	212	14	3	5.2	55	190	41	14	63	2.4	13.4	1395	4899
DAY TOTAL	2847	25	212	14	3	5.2	55	190	41	14	63	2.4	13.4	1395	5777

04-28-03 THRU 05-02-03

AVERAGE WEEKDAY CLASSIFICATION VOLUMES \*\*\*\*\*

CARS PICKUPS	BUS	SINGLE UNITS	HVY	4+	SINGLE UNIT %	DOUBLE UNITS	DOUBLE UNIT %	5-	6	7+	TRAIN %	TRUCK %	CLASS UNKNOWN	TOTAL VEHICLES
43684	322	2799	332	59	6.7	648	1602	398	114	68	497	1.3	13.0	52575
46341	332	2916	335	60	6.56	690	1658	396	116	80	530	1.3	13.0	58200
TOTAL HOURS FOR COUNT	89													61365
AVG WEEKDAY VOL	52575	X	SEASONAL ADJ.	FACTOR	0.9600	=	ESTIMATED	AVG	DAILY	TRAFFIC	50472			
AVG WEEKDAY VOL	55503													53283

PEAK HOUR PERCENTAGES: K = 8.42 D = 54.76 T = 9.74  
 PEAK HOUR LOCATION: VOLUME = 8.88 DATE: 04/30/03 TIME: 05:00 PM  
 PEAK HOUR LOCATION: VOLUME = 4671

NOTE: CLASS UNKNOWN HIGH NB