



Interval  60 min.  15 min.

Count(volume)  Speed

Binned(CL/SP)  Raw

---

Lane No  1  2

Direction Channel 1 \_\_\_\_\_

Direction Channel 2 \_\_\_\_\_

Data Hog # 3167

Counter No. 3110 Count ID 252

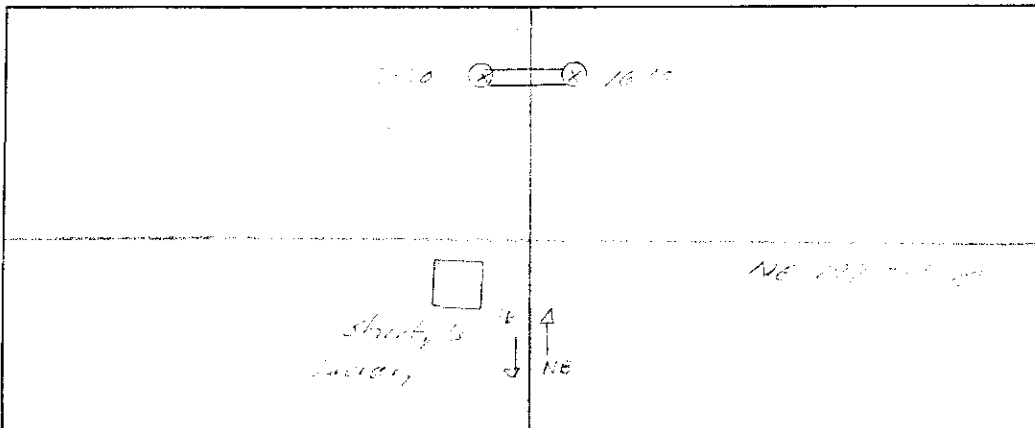
SR 200 RRT/RRQ \_\_\_\_\_ MP 1.7

Leg \_\_\_\_\_ Direction 2 OSID \_\_\_\_\_

Station Description \_ ON 14 200 1.7 200 1.7 **NE**

Date	Day	Time	Comments
4/12/12	2	1122	Manual (1) _____ (2) _____ Counter (1) _____ (2) _____ <i>6.4</i>
4/12	3	1122	Manual (1) <u>19</u> (2) _____ Counter (1) <u>19</u> (2) _____ <i>6.4</i>
4/12	4	1122	Manual (1) <u>22</u> (2) _____ Counter (1) <u>22</u> (2) _____ <i>6.4</i>
4/12	5	1122	Manual (1) <u>24</u> (2) _____ Counter (1) <u>24</u> (2) _____ <i>6.4</i>
4/12	6	0938	Manual (1) <u>7</u> (2) _____ Counter (1) <u>7</u> (2) _____ <i>6.4</i>

Sketch



Field Person



Interval  60 min.  15 min.

Count(volume)  Speed

Binned(CL/SP)  Raw

---

Lane No  1  2

Direction Channel 1 \_\_\_\_\_

Direction Channel 2 \_\_\_\_\_

Data Hog # 3167

Counter No. 1690 <sup>1690</sup> Count ID ATR

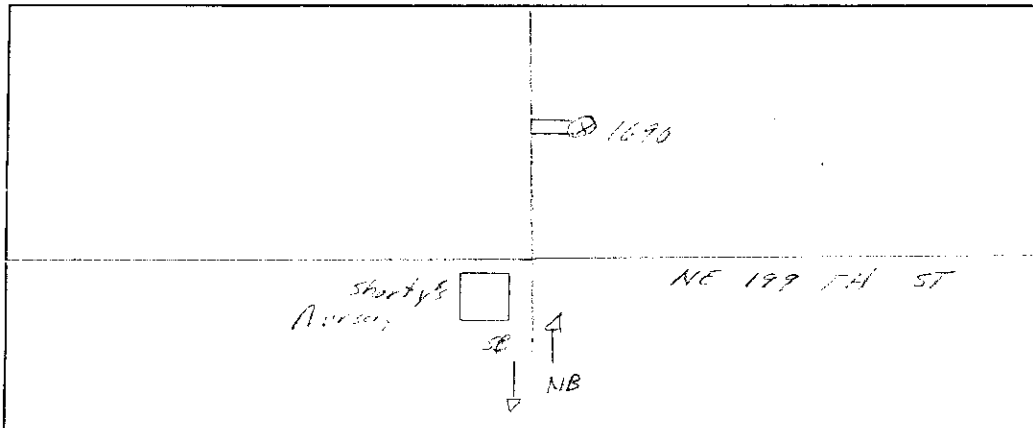
SR 502 RRT/RRQ \_\_\_\_\_ MP 1.95

Leg 2 Direction SE OSID \_\_\_\_\_

Station Description \_ ON SR 502 NE 199 ST

Date	Day	Time	Comments
4/18/02	2	1037	Manual (1) <u>6</u> (2) Counter (1) <u>6</u> (2) <i>set a/c. SR 502 NE 199 ST 6.3</i>
4/19	3	1124	Manual (1) <u>15</u> (2) Counter (1) <u>15</u> (2) <i>check a/c. SR 502 NE 199 ST 6.3</i>
4/20	4	1037	Manual (1) <u>13</u> (2) Counter (1) <u>13</u> (2) <i>check a/c. SR 502 NE 199 ST 6.3</i>
4/21	5	1125	Manual (1) <u>17</u> (2) Counter (1) <u>17</u> (2) <i>called 3-6/4-8 check a/c. SR 502 NE 199 ST 6.3</i>
4/22	6	0941	Manual (1) <u>8</u> (2) Counter (1) <u>8</u> (2) <i>check a/c. SR 502 NE 199 ST 6.3</i>

Sketch



Field Person

STATE OF WASHINGTON - DEPARTMENT OF TRANSPORTATION  
TRIP SYSTEM  
HOURLY TRAFFIC CLASSIFICATION SUMMARY

SR 502 MP 001.05 OFF SYSTEM ID. LEG 2 DIRECTION OF TRAFFIC SOUTHBOUND LANE ALL OF  
COUNT IDENTIFIER ATR COUNTER NUMBER 003410 DESCRIPTION: ON SR 502 N/O NE 199TH ST

04-18-05	CARS PICKUPS	BUS	SINGLE MED	UNITS HVY	4+	SINGLE UNIT %	DOUBLE 4-	UNITS 5	DOUBLE 6+	DOUBLE UNIT %	5-	TRAINS 6	7+	TRAIN %	TRUCK %	CLASS UNKNOWN	TOTAL VEHICLES
MONDAY																	
AM HOURS																	
12 - 1	321		28	1		7.9	1	9	2	3.3			3	.8	12.0		366
1 - 2	274		32	1		10.6		1	2	1.0			1	.6	12.2		312
2 - 3	301		25			7.6	1	2	1	1.2			1		8.8		330
3 - 4	318		23	4		7.8	1	1	1	.9					8.6		348
4 - 5	335		31	3		10.3	1	3	2	1.6					11.9		378
5 - 6	330	5	24	2	1	7.7	1	3		1.1			1	.3	9.1		363
6 - 7	310		13	1		4.3	2			.6					4.9		326
7 - 8	283		21			6.9	1	1		.3					7.2		305
8 - 9	169		7			4.0		1		.6					4.5		177
9 - 10	122		13			9.4	1	1		1.4			1	.7	11.5	1	139
10 - 11	101		2	1		2.9			1	1.0					3.8		105
11 - 12	79		4			4.8									4.8		83
	32		2			5.4		2		5.4			1	2.7	13.5		37
AM TOTAL	321		28	1		7.9	1	9	2	3.3			3	.8	12.0		366
PM TOTAL	2652		197	12	1	7.4	7	13	9	1.0			4	.2	8.6		2903
DAY TOTAL	2973	6	225	13	1	7.5	8	22	11	1.3	1		7	.2	9.0	2	3269
																2-AXLE EQUIVALENT	3359

SR 502 MP 001.05 OFF SYSTEM ID. LEG 2 DIRECTION OF TRAFFIC SOUTHBOUND LANE ALL OF  
COUNT IDENTIFIER ATR COUNTER NUMBER 003410 DESCRIPTION: ON SR 502 N/O NE 199TH ST

DAY	AM TOTAL	PM TOTAL	CARS PICKUPS	BUS	SINGLE MED	SINGLE HVY	4+ UNIT	DOUBLE 4-	DOUBLE 5	DOUBLE 6+	DOUBLE UNIT %	5- TRAINS	6	7+	TRAIN %	TRUCK %	CLASS UNKNOWN	TOTAL VEHICLES
04-19-05																		
TUESDAY																		
AM HOURS	12	1	19		1						4.5					13.6		22
	1	2	14		1						6.7					6.7		15
	2	3	14	1	1	1					17.6					17.6		17
	3	4	25		1	1					3.7					7.4		27
	4	5	104		4	1	1	1			4.5					7.1		112
	5	6	369		36	1	1	1	1		9.0					10.4		412
	6	7	610	2	41	2	1	1	1	1	6.8					7.7		661
	7	8	641		40	3	1	2	4	1	1.5					7.2		691
	8	9	535	1	41	1	1	1	1	1	1.0	1				8.5		588
	9	10	367		30	2	1	1	5	2	2.0					9.6		407
	10	11	352		25	2	1	1	7	1	2.0					9.7		391
	11	12	317		21	8		1	4	1	1.7					9.9		352
PM HOURS																		
	12	1	323		26	4		1	3	1	8.3					10.5		361
	1	2	315		20	3		2	3	3	1.4					9.2		347
	2	3	323	2	22	1	1	1	2	3	2.3					8.7		355
	3	4	353	3	34	2	2	2	2	2	.8					11.7		401
	4	5	344		27	4	2	2	2	2	1.0					9.2		380
	5	6	326	1	12	1					1.1					4.1		341
	6	7	311		21	1	1	1	1	1	.3	1				7.4		336
	7	8	191		5						.5					3.0		197
	8	9	156		10	1		2			1.2					7.6	1	170
	9	10	139		10						.7					7.3		150
	10	11	80		3						1.2					4.8		84
	11	12	47		4						1.9					9.6		52
AM TOTAL	3567			4	242	19	4	8	31	12	1.4	3				8.7		3695
PM TOTAL	2908			6	194	16	4	9	12	10	1.0	3				8.2		3174
DAY TOTAL	6275			10	436	35	4	17	43	22	1.2	6				8.5	10	6869
																		7051

2-AXLE EQUIVALENT

SR 502 MP 001.05 OFF SYSTEM ID. LEG 2 DIRECTION OF TRAFFIC SOUTHBOUND LANE ALL OF

COUNT IDENTIFIER ATR COUNTER NUMBER 003410 DESCRIPTION: ON SR 502 N/O NE 199TH ST

DATE	TIME	CARS PICKUPS	BUS	SINGLE MED	HVY	SINGLE UNIT %	DOUBLE UNIT %	6+	DOUBLE UNIT %	5-	6	7+	TRAIN %	TRUCK %	CLASS UNKNOWN	TOTAL VEHICLES
04-20-05	WEDNESDAY															
12	AM HOURS	20		1		4.2	4		12.5					16.7		24
1		21		1		4.3	1		4.3					8.7		23
2		17		2		13.0	1	1	13.0					26.1		23
3		24		3		11.1								11.1		27
4		100		6		5.4		2	2.7	2		1	1.8	9.9		111
5		384		40		9.7	1	4	1.4			1	.5	11.5		434
6		587		51		8.7	3	1	1.1			1	.5	9.8		652
7		591		38		6.3	2	2	.8	1		1	.5	7.5		640
8		520		35		7.2	4	3	1.1	1		1	.5	8.8		570
9		381		28		8.8	4	3	3.7	1		2	.2	13.1		430
10		331		26		8.9	4	4	3.7				.5	13.1		382
11		327		26		9.0	1	5	1.9		1		.3	11.1		368
12	PM HOURS															
1		322		31		9.0	1	4	2.7			1	.3	11.7		366
2		287		33		12.0	2	6	3.5			1	.3	15.8		341
3		363		29		8.6	4	6	2.0	1		1	.5	11.0		409
4		325		26		9.4	3	8	3.2					12.6		373
5		306		18		7.7	1	2	.9			1	.3	8.9		336
6		334		27		8.4	2	1	.8					9.5		370
7		343		18		5.2								5.2		363
8		179		11		6.2	1	1	.5					6.7		193
9		176		11		5.3			.5					5.9		187
10		117		10		6.3	1		.8			1	1.3	7.1		126
11		70		5		6.5		1	2.4					7.8		77
12		39		1		2.4								4.9		41
AM TOTAL		3303	4	269	26	8.1	18	21	1.8	5	4	5	.4	10.3	3	3684
PM TOTAL		2861	10	216	30	8.0	10	14	1.6	1	1	4	.2	9.9	7	3182
DAY TOTAL		6164	14	485	56	8.1	28	35	1.7	6	5	9	.3	10.1	10	6866

2-AXLE EQUIVALENT

SR 502 MP 001.05 OFF SYSTEM ID. LEG 2 DIRECTION OF TRAFFIC SOUTHBOUND LANE ALL OF  
COUNT IDENTIFIER ATR COUNTER NUMBER 003410 DESCRIPTION: ON SR 502 N/O NE 199TH ST

THURSDAY AM HOURS	CARS PICKUPS	BUS	MED	SINGLE UNITS 4+	SINGLE UNIT %	DOUBLE UNITS 4-	5	6+	DOUBLE UNIT %	5-	6	7+	TRAIN %	TRUCK %	CLASS UNKNOWN	TOTAL VEHICLES
12 - 1	23	1	1	1	6.9	4	4	1	13.8	2	2	8	.3	20.7	8	3704
1 - 2	10				8.3				8.3					16.7	7	3226
2 - 3	14															
3 - 4	28				14.7				2.9					17.6	8	6930
4 - 5	117				6.3	2	6	3	1.6	1	1	2	1.2	10.4	1	350
5 - 6	359				9.3	1	6	3	2.5					8.6	1	336
6 - 7	578	2	2	1	9.8	4	3	3	2.2	1	3	3	.7	11.8	1	401
7 - 8	596				6.6	4	4	3	1.7					10.1	2	372
8 - 9	538	2	2	2	6.6	1	4	5	1.5	1	1	1	.2	8.3	1	651
9 - 10	398				8.2	4	3	2	2.0					11.1	2	449
10 - 11	328				9.5	4	4	1	1.4					11.4	1	370
11 - 12	333				7.4	5	5	4	2.9	1	1	2	.5	10.8	4	378
PM HOURS																
12 - 1	305	2	3	4	10.3	2	4	4	2.3					12.6	1	350
1 - 2	301				6.0	3	6	3	3.3	1	1	2	1.2	10.4	1	336
2 - 3	347	1	1	2	9.5	3	6	3	3.0					13.2	1	401
3 - 4	331				9.4	1	1	3	1.3	1		3	.3	11.0	1	372
4 - 5	349	1	1	3	6.7	5	2	2	2.3			1	.3	9.3	2	387
5 - 6	337				7.4	2	2	2	.5					7.9	2	387
6 - 7	336	1	1	2	7.1	1	2	1	1.1			1	.3	8.4	1	366
7 - 8	216				5.2	1	1	1	.9					6.1	1	366
8 - 9	157	1	1	1	6.5									6.5	1	231
9 - 10	127				3.8									3.8	1	169
10 - 11	64	1	1	1	3.0				1.5					4.5	1	132
11 - 12	43				6.4		1	1	2.1					8.5	1	67
AM TOTAL	3322	5	282	12	8.1	12	32	20	1.7	2	1	8	.3	10.1	8	3704
PM TOTAL	2913	7	220	13	7.5	15	22	18	1.7	2	2	6	.3	9.5	7	3226
DAY TOTAL	6235	12	502	25	7.8	27	54	38	1.7	4	3	14	.3	9.8	15	6930

2-AXLE EQUIVALENT 7175

SR 502 MP 001.05 OFF SYSTEM ID. LEG 2 DIRECTION OF TRAFFIC SOUTHBOUND LANE ALL OF  
 COUNT IDENTIFIER ATR COUNTER NUMBER 003410 DESCRIPTION: ON SR 502 N/O NE 199TH ST

FRIDAY AM HOURS	CARS PICKUPS	BUS	SINGLE MED	UNITS HVY	4+	SINGLE UNIT %	DOUBLE UNITS	4-	5	6+	DOUBLE UNIT %	5-	TRAINS	6	7+	TRAIN %	TRUCK %	CLASS UNKNOWN	TOTAL VEHICLES		
12 - 1	14																			17	
1 - 2	15			1		15.8			2	1	17.6						17.6		19		
2 - 3	18					9.5			1	1	5.3						21.1		21		
3 - 4	32					13.2		1			4.8						14.3		38		
4 - 5	86					4.3					2.6						15.8		92		
5 - 6	348			1		11.1				3	1.1						6.5		397		
6 - 7	553			1		8.3		1		1	.8						12.3		613		
7 - 8	572					6.0		4		4	1.0						7.6		619		
8 - 9	551			1		8.8			6	1	1.5						10.2		615		
9 - 10																					
10 - 11																					
11 - 12																					
PM HOURS																					
12 - 1																					
1 - 2																					
2 - 3																					
3 - 4																					
4 - 5																					
5 - 6																					
6 - 7																					
7 - 8																					
8 - 9																					
9 - 10																					
10 - 11																					
11 - 12																					
AM TOTAL	2189			4		8.2		6		6	1.3								2	2431	
PM TOTAL																					
DAY TOTAL	2189			4		8.2		6		6	1.3								2	2431	
																					2505

04-18-05 THRU 04-22-05  
 AVERAGE WEEKDAY CLASSIFICATION VOLUMES \*\*\*\*\*  
 CARS SINGLE UNITS 4+ SINGLE UNIT % DOUBLE UNITS 4- 5 6+ DOUBLE UNIT % 5- 6 7+ TRAIN % TRUCK % CLASS UNKNOWN TOTAL VEHICLES  
 PICKUPS BUS MED HVY 4+ UNIT % 4- 5 6+ UNIT % 5- 6 7+ TRAIN % TRUCK % CLASS UNKNOWN TOTAL VEHICLES  
 VOLUME 6225 12 474 39 2 7.7 24 44 38 1.5 5 4 10 .3 9.5 12 6888  
 TOTAL HOURS FOR COUNT 93 FACTOR GROUP CB-02  
 3 DAYS AMD 2-AXLE EQUIVALENT  
 AVG WEEKDAY VOL 6888 X SEASONAL ADJ. FACTOR 0.9700 = ESTIMATED AVG DAILY TRAFFIC 6681

SR 502 MP 001.05 OFF SYSTEM ID. LEG 2 DIRECTION OF TRAFFIC NORTHBOUND LANE ALL OF  
 COUNT IDENTIFIER ATR COUNTER NUMBER 001690 DESCRIPTION: ON SR 502 N/O NE 199TH ST

04-18-05	CARS PICKUPS	BUS	SINGLE MED	UNITS HVY	4+	SINGLE UNIT %	DOUBLE 4-	UNITS 5	DOUBLE 6+	UNIT %	5-	TRAINS 6	UNITS 7+	TRAIN %	TRUCK %	CLASS UNKNOWN	TOTAL VEHICLES
MONDAY	262	1	34	4	4	10.1	2	2	1	1.7					11.8		297
AM HOURS	280	1	34	4	4	11.9	2	4	4	3.0					14.9		329
12 - 1	306		36	3	3	11.1	1	2	1	.9					12.0		350
1 - 2	386	2	29	1	2	8.0	1	1	1	.7			2		9.2		425
2 - 3	531		36	2	2	6.5	2	3	2	1.2			4		8.4		581
3 - 4	615		55	2	2	8.2	1	1	1	.1					8.3		671
4 - 5	668	2	46	2	2	6.9	3	1	1	.7					7.6		725
5 - 6	489		34	16	2	6.8		3		.8					7.6		529
6 - 7	279		14	14	2	5.4		2		1.1					5.4		295
7 - 8	264		10	14	1	4.9	1	1	2	.8					4.4		283
8 - 9	220		7	10	1	4.3	1		1	1.1					4.3		230
9 - 10	121		6	1	1	6.2	1		1	.8					6.9		130
10 - 11	90		6	1	1	6.2	1		1	1.0					7.2		97
11 - 12																	
AM TOTAL	262	1	34	4	4	10.1	2	2	1	1.7					11.8		297
PM TOTAL	4249	5	323	15	2	7.4	13	16	9	1.7			6		8.4		4645
DAY TOTAL	4511	5	349	19	2	7.6	15	18	10	.9			6	.1	8.6	6	4942

2-AXLE EQUIVALENT





TRIP SYSTEM HOURLY TRAFFIC CLASSIFICATION SUMMARY

SR 502 MP 001.05 OFF SYSTEM ID. LEG 2 DIRECTION OF TRAFFIC NORTHBOUND LANE ALL OF

COUNT IDENTIFIER ATR COUNTER NUMBER 001690 DESCRIPTION: ON SR 502 N/O NE 199TH ST

DAY	CARS PICKUPS	BUS	SINGLE MED	UNITS HVY	4+	SINGLE UNIT %	DOUBLE 4-	DOUBLE 5+	DOUBLE 6+	DOUBLE UNIT %	5-	TRAINS 6	TRAINS 7+	TRAIN %	TRUCK %	CLASS UNKNOWN	TOTAL VEHICLES
04-20-05																	
WEDNESDAY																	
AM HOURS	64		5			6.8	1	2		4.1			1	1.4	12.3		73
12 - 1	25		1			7.1							1	3.6	10.7		28
1 - 2	32													3.0	23.8		21
2 - 3	15		2			9.5	1	1	1	14.3	1				6.7		17
3 - 4	17														10.4		45
4 - 5	42	1	9	1	1	4.4	1	1	2	2.2				13.1	13.1		134
5 - 6	120	3	20	6	2	7.5	1	1	1	3.0				10.7	11.9	1	371
6 - 7	218		21	1	3	11.6	1	1	1	1.2				13.1	10.7	1	467
7 - 8	215		21	1	2	8.9	1	1	1	1.2	1	1	1	1.2	13.3	5	251
8 - 9	250	1	24	4	2	10.7	1	6	1	2.8				.8	13.8		248
9 - 10	218		22	5	1	10.9	1	3	5	3.5				.3	15.2		290
10 - 11	257	1	36	3	1	13.1		1	6	2.2	4	1	3	.3	17.6		257
11 - 12														2.2	17.6		312
PM HOURS																	
12 - 1	278	1	24	3	1	9.1	4	2	3	2.8	1	1		.6	12.5	1	319
1 - 2	326		25	2	2	8.1	2	3	6	3.0		3		.8	11.9	1	371
2 - 3	416		31	3	3	7.9	3	5	5	2.8				.3	10.8	1	609
3 - 4	534	1	55	4	2	9.7	4	2	3	1.5	1	1		.3	11.5	5	651
4 - 5	581	2	47	3	4	10.0	2	1	2	.5		2		.3	10.8		651
5 - 6	681		33	3	1	6.9	2	2	1	.4				.1	7.6	1	737
6 - 7	525	1	22	1	1	6.2	1	3	1	1.1		1	2	.2	6.7	1	564
7 - 8	339		14	3		6.8	1	1		1.1				.4	8.4		370
8 - 9	285		8	1		4.6	2	1	1	.7				.3	5.3	2	303
9 - 10	274		6			3.1		1	1	1.4				.4	4.5		289
10 - 11	153		5			3.8								.3	3.8		159
11 - 12	96					5.0									5.0		101
AM TOTAL	1473	7	141	20	4	10.1	8	17	16	2.4	6	3	8	1.0	13.5	6	1709
PM TOTAL	4488	6	321	25	13	7.4	19	21	21	1.2	2	3	8	.3	8.9	13	4940
DAY TOTAL	5961	13	462	45	17	8.1	27	38	37	1.5	8	6	16	.5	10.1	19	6649
															2-AXLE EQUIVALENT		6911

HOURLY TRAFFIC CLASSIFICATION SUMMARY

SR 502 MP 001.05 OFF SYSTEM ID. LEG 2 DIRECTION OF TRAFFIC NORTHBOUND LANE ALL OF

COUNT IDENTIFIER ATR COUNTER NUMBER 001690 DESCRIPTION: ON SR 502 N/O NE 199TH ST

04-21-05	CARS PICKUPS	BUS	SINGLE MED	HVY	4+	SINGLE UNIT %	DOUBLE 4-	DOUBLE 5	DOUBLE 6+	DOUBLE UNIT %	5-	TRAINS 6	TRAINS 7+	TRAIN %	TRUCK %	CLASS UNKNOWN	TOTAL VEHICLES
THURSDAY	58	1	2			4.8			1	1.6			1	1.6	7.9		63
AM HOURS	38					5.0				4.5			7	1.6	5.0		40
1 - 2	21					17.6				5.9			2	1.6	4.5		22
2 - 3	12					6.9				3.4			7	1.6	23.5		17
3 - 4	26					4.9				4.1			2	1.6	10.3		29
4 - 5	39					7.4				2.6			2	1.6	4.9		41
5 - 6	129					7.4				4.1			2	1.6	11.5		148
6 - 7	201					12.9				1.2			2	1.6	10.9		229
7 - 8	218					9.1				2.6			3	1.3	14.5		256
8 - 9	197					10.8				3.6			3	1.3	14.7		232
9 - 10	237					10.5				2.5			1	1.3	12.8		274
10 - 11	274					8.0				1.9			2	1.6	13.2		325
11 - 12	326					9.3				2.3			2	1.6	10.4		364
PM HOURS	302					7.2				2.5			2	1.6	12.2		345
1 - 2	434					9.4				2.8			3	1.6	10.3		484
2 - 3	542					7.6				2.4			2	1.6	10.5		608
3 - 4	611					6.7				1.9			2	1.6	8.7		670
4 - 5	720					6.5				1.9			1	1.6	7.3		778
5 - 6	518					7.0				2.2			1	1.6	6.7		556
6 - 7	356					6.0				1.8			1	1.6	7.5		385
7 - 8	279					4.3				1.4			1	1.6	7.9		266
8 - 9	134					1.8				0.9			1	1.6	6.4		298
9 - 10	106					9.4				2.6			1	1.6	8.5		141
10 - 11	4572					7.3				1.0			2	1.6	8.5		5005
11 - 12	1450					7.8				1.4			1	1.6	9.5		1676
AM TOTAL	4572					7.8				1.4			1	1.6	9.5		5005
PM TOTAL	6022					7.8				1.4			2	1.6	9.5		6681
DAY TOTAL	6022					7.8				1.4			3	1.6	9.5		6893

2-AXLE EQUIVALENT

SR 502 MP 001.05 OFF SYSTEM ID. LEG 2 DIRECTION OF TRAFFIC NORTHBOUND LANE ALL OF  
COUNT IDENTIFIER ATR COUNTER NUMBER 001690 DESCRIPTION: ON SR 502 N/O NE 199TH ST

04-22-05	FRIDAY	AM HOURS	CARS PICKUPS	BUS	SINGLE MED	HVY	4+	SINGLE UNIT %	DOUBLE 4-	DOUBLE 5	DOUBLE 6+	DOUBLE UNIT %	5-	TRAINS 6	TRAINS 7+	TRAIN %	TRUCK %	CLASS UNKNOWN	TOTAL VEHICLES
12 - 1			67	1	2			4.2		1		1.4			1	1.4	6.9		72
1 - 2			33		3			10.3		2		5.1					15.4		39
2 - 3			18																18
3 - 4			24		1			3.8											26
4 - 5			18		2			13.0		1		8.7							25
5 - 6			36		3			7.3		1		4.9							41
6 - 7			111		11			8.7		4		3.1		1					127
7 - 8			218		16			8.5		3		2.4							246
8 - 9			212		21			10.8		5		3.6			1				249
9 - 10																			
10 - 11																			
11 - 12																			
PM HOURS																			
12 - 1																			
1 - 2																			
2 - 3																			
3 - 4																			
4 - 5																			
5 - 6																			
6 - 7																			
7 - 8																			
8 - 9																			
9 - 10																			
10 - 11																			
11 - 12																			
AM TOTAL			737	5	59	8	1	8.7	4	17	5	3.1	1		3	.5	12.2	1	841
PM TOTAL																			
DAY TOTAL			737	5	59	8	1	8.7	4	17	5	3.1	1		3	.5	12.2	1	841

04-18-05 THRU 04-22-05  
AVERAGE WEEKDAY CLASSIFICATION VOLUMES \*\*\*\*\*  
CARS PICKUPS | BUS MED HVY | SINGLE UNIT % | DOUBLE 4- | DOUBLE 5 | DOUBLE 6+ | DOUBLE UNIT % | 5- | TRAINS 6 | TRAINS 7+ | TRAIN % | TRUCK % | CLASS UNKNOWN | TOTAL VEHICLES

AVG WEEKDAY VOLUME	5986	11	457	41	11	7.8	25	37	26	1.3	4	4	17	.4	9.5	22	6641
TOTAL HOURS FOR COUNT	93																
3 DAYS																	
AVG WEEKDAY VOL	6641	X	SEASONAL	ADJ.	FACTOR	0.9700	=	ESTIMATED	AVG	DAILY	TRAFFIC	6442					6862



SR 502 MP 001.05 OFF SYSTEM ID. LEG 2 DIRECTION OF TRAFFIC BOTH WAYS LANE ALL OFF

COUNT IDENTIFIER ATR COUNTER NUMBER 001690 DESCRIPTION: ON SR 502 N/O NE 199TH ST

DAY	TOTAL	CARS PICKUPS	BUS	SINGLE MED	SINGLE HVY	4+	SINGLE UNIT %	DOUBLE 4-	DOUBLE 5	DOUBLE 6+	DOUBLE UNIT %	5-	TRAINS 6	TRAINS 7+	TRAIN %	TRUCK %	CLASS UNKNOWN	TOTAL VEHICLES	
																			AM HOURS
04-19-05																			
TUESDAY																			
AM HOURS	4796	78	1	4	1	5	4.7	1	1	1	2.4	4	3	14	1.2	8.2	13	5348	
PM HOURS	7455	43	1	3	1	4	10.4	1	1	1	10.5	5	4	10	1.2	10.1	18	8114	
DAY TOTAL	12251	124	2	7	2	9	7.3	2	2	2	1.2	9	7	24	.3	8.8	31	13462	
																			2-AXLE EQUIVALENT 13835

SR 502 MP 001.05 OFF SYSTEM ID. LEG 2 DIRECTION OF TRAFFIC BOTH WAYS LANE ALL OF  
COUNT IDENTIFIER ATR COUNTER NUMBER 001690 DESCRIPTION: ON SR 502 N/O NE 199TH ST

04-20-05 WEDNESDAY AM HOURS	CARS PICKUPS	BUS	SINGLE MED	SINGLE UNITS HVY	4+ UNIT	SINGLE UNIT %	DOUBLE 4-5	DOUBLE UNITS 6+	DOUBLE UNIT %	5- TRAINS	6 TRAINS	7+ TRAINS	TRAIN %	TRUCK %	CLASS UNKNOWN	TOTAL VEHICLES	
																	1
12 - 1	84		6			6.2			6.2							97	
1 - 2	46		2			5.9			2.0				1.0			51	
2 - 3	49		2			5.4			5.4				2.0			56	
3 - 4	39		5			10.4			6.3				1.8			48	
4 - 5	117		6			4.7			2.3				1.6			128	
5 - 6	426		6			9.2			1.5				.4			479	
6 - 7	707		60			8.5			1.4				.4			786	
7 - 8	809		58			7.7			.9				.4			891	
8 - 9	735		59			7.7			1.1				.7			818	
9 - 10	631		50			9.6			2.5				.6			720	
10 - 11	549		50			9.7			3.6				.6			639	
11 - 12	584		62			10.9			2.1				1.2			680	
PM HOURS																	
12 - 1	600		55			9.1			2.8				.3			685	
1 - 2	613		58			10.0			3.2				.6			712	
2 - 3	779		60			8.2			2.4				.2			876	
3 - 4	859		77			9.6			2.1				.2			982	
4 - 5	887		73			9.2			.6				.3			987	
5 - 6	1015		74			7.4			.2				.2			1107	
6 - 7	868		51			5.8			.6				.1			927	
7 - 8	518		33			6.6			.9				.4			563	
8 - 9	461		24			4.9			.6				.1			490	
9 - 10	391		15			4.1			1.2				.4			415	
10 - 11	223		11			4.7			.7				.4			236	
11 - 12	135		6			4.2			.7				.4			142	
AM TOTAL	4776		410			8.7			2.0				.6			5393	
PM TOTAL	7349		537			7.6			1.4				.2			8122	
DAY TOTAL	12125		947			8.1			1.6				.4			13515	
														10.1		29	14035
														2-AXLE EQUIVALENT			

SR 502 MP 001.05 OFF SYSTEM ID. COUNTER NUMBER 001690 LEG 2 DESCRIPTION: ON SR 502 N/O NE 199TH ST LANE ALL OF

04-21-05 THURSDAY AM HOURS	CARS PICKUPS	BUS MED	SINGLE UNITS Hvy	4+	SINGLE UNIT %	DOUBLE UNITS 4-	5	6+	DOUBLE UNIT %	5-	TRAINS 6	7+	TRAIN %	TRUCK %	CLASS UNKNOWN	TOTAL VEHICLES
12 - 1	81	2	3		5.4		4	1	5.4			1	1.1	12.0		92
1 - 2	48				5.8				1.9					7.7		52
2 - 3	35								2.8					2.8		36
3 - 4	40								3.9					19.6		51
4 - 5	143		7	1	15.7		1	1	1.9			1	.6	8.9	1	157
5 - 6	398		39	1	6.4		2	1	2.2			1	.1	11.2	2	448
6 - 7	707		70	2	8.9		6	3	1.9			2	.2	10.4	4	791
7 - 8	797		53	5	6.8		6	5	1.9			2	.2	9.0	4	880
8 - 9	756		65	5	8.5		2	7	1.4			6	.2	10.2	3	845
9 - 10	595		60	2	9.1		6	3	2.2		1	6	1.0	12.3	2	681
10 - 11	565		55	3	9.3		3	6	2.3			2	.3	12.0	2	644
11 - 12	607		55	3	8.8		4	6	2.7		1	2	.4	11.9	12	703
PM HOURS																
12 - 1	631		53	6	9.1		1	8	2.1			2	.3	11.5	1	714
1 - 2	603		48	4	7.6		3	5	2.8		1	4	.9	11.3	1	681
2 - 3	781		67	3	8.2		8	4	2.7			6	.7	11.6	1	885
3 - 4	873		86	5	9.4		2	5	1.0		1	2	.3	10.7	2	980
4 - 5	960		70	5	7.3		8	3	1.4			2	.2	8.9	3	1057
5 - 6	1057		78	2	6.9		2	4	.4		1	1	.2	7.5	1	1144
6 - 7	854		59	2	6.7		1	1	.5				.1	7.4	2	924
7 - 8	572		36	1	6.3		3	1	.6					7.0	1	616
8 - 9	401		27		6.9		1	1	.5					7.4	1	435
9 - 10	406		23		5.3			1	.2					5.6	1	430
10 - 11	198		6		3.8		1	1	1.0					4.8	1	208
11 - 12	149		5		3.2		1	1	1.3		1		.6	5.1	1	157
AM TOTAL	4772	11	419	23	8.5	23	49	35	2.0	3	1	15	.4	10.8	26	5380
PM TOTAL	7485	11	558	29	7.4	30	44	30	1.3	2	4	17	.3	8.9	14	8231
DAY TOTAL	12257	22	977	52	7.8	53	93	65	1.6	5	5	32	.3	9.7	40	13611
2-AXLE EQUIVALENT 14067																



SR 502 MP 001.05 OFF SYSTEM ID. LEG 2 DIRECTION OF TRAFFIC BOTH WAYS LANE ALL OF  
 COUNT IDENTIFIER ATR COUNTER NUMBER 001690 DESCRIPTION: ON SR 502 N/O NE 199TH ST

04-22-05	FRIDAY	AM HOURS	CARS PICKUPS	BUS	SINGLE MED	UNITS HVY	4+	SINGLE UNIT %	DOUBLE UNITS	DOUBLE UNIT %	5-	TRAINS	7+	TRAIN %	TRUCK %	CLASS UNKNOWN	TOTAL VEHICLES
12	1	2	81	1	2	1	3.4	12.1	3	4.5	1	1	1.1	9.0	17.2	89	58
1	2	3	48	1	5	1	3.1	10.7	3	4.5	1	1	1.1	7.7	10.9	39	39
2	3	4	36	2	2	1	9.4	6.1	1	2.6	1	1	0.9	10.9	9.6	115	64
3	4	5	56	1	4	1	6.1	10.7	2	2.6	1	1	0.9	12.3	10.1	115	115
4	5	6	104	1	5	1	6.1	10.7	1	1.1	1	1	0.5	12.3	10.1	438	438
5	6	7	384	1	5	2	8.4	8.4	1	1.4	1	1	0.4	10.1	8.7	740	740
6	7	8	664	1	4	2	6.7	6.7	6	1.7	1	2	0.2	8.7	8.7	865	865
7	8	9	790	1	7	1	9.4	9.4	2	1.7	1	3	0.5	11.6	11.6	864	864
8	9	10	763	3	7	6	9.4	9.4	11	1.7	1	3	0.5	11.6	11.6	864	864
9	10	11															
10	11	12															
PM HOURS																	
12	1	2															
1	2	3															
2	3	4															
3	4	5															
4	5	6															
5	6	7															
6	7	8															
7	8	9															
8	9	10															
9	10	11															
10	11	12															
AM TOTAL	2926	9	241	22	1	8.3	10	36	11	1.7	3	10	0.4	10.5	3	3272	
PM TOTAL	2926	9	241	22	1	8.3	10	36	11	1.7	3	10	0.4	10.5	3	3272	
DAY TOTAL	2926	9	241	22	1	8.3	10	36	11	1.7	3	10	0.4	10.5	3	3272	

04-18-05 THRU 04-22-05

AVERAGE WEEKDAY CLASSIFICATION VOLUMES	CARS PICKUPS	BUS MED	SINGLE UNITS HVY	4+	SINGLE UNIT %	DOUBLE UNITS	DOUBLE UNIT %	5-	TRAINS	7+	TRAIN %	TRUCK %	CLASS UNKNOWN	TOTAL VEHICLES		
12211	23	931	79	13	7.7	49	81	64	1.4	9	8	27	0.3	9.5	33	13529
TOTAL HOURS FOR COUNT	93															
3 DAYS																
AVG WEEKDAY VOL	13529	X	SEASONAL ADJ.	FACTOR	0.9700	=	ESTIMATED	AVG	DAILY	TRAFFIC	13123					
PEAK HOUR PERCENTAGES:	K =	8.46	D =	68.01	T =	7.52										
PEAK HOUR LOCATION :	VOLUME =	1144	DATE:	04/21/05	TIME:	05:00	PM									

29123