

# Diamond Traffic Counter



Washington State  
Department of Transportation

Interval  15 MIN  60 MIN  
 Count(volume)  Binned(CL/SP)  
 Speed Lane No  1  2

---

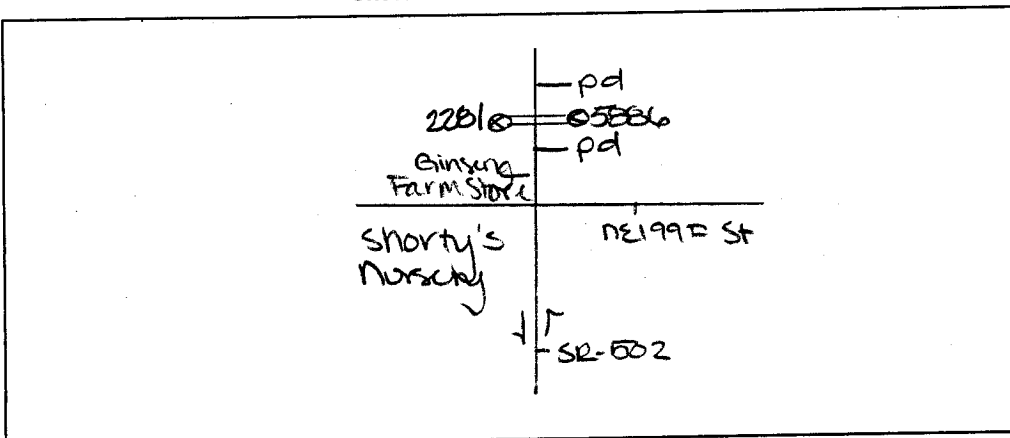
Direction CH #1 \_\_\_\_\_  
 Direction CH #2 \_\_\_\_\_  
 Data Hog # 7066

Counter No. 15-2281 Count ID PTTR  
 SR 502 RRT/RRQ \_\_\_\_\_ MP 1.05  
 Leg 2 Direction sb OSID \_\_\_\_\_

Station Description \_ ON SR-502 n/o NE199E St

Date	Day	Time	Comments
4/9/07	2	1227	Manual (1) <u>3</u> (2) _____ set cntr as <u>CIS</u> <u>6.5</u> Counter (1) <u>3</u> (2) _____ cntr ok AH STUDY WAS COLLECTED IN 15 MIN <u>INTERVALS</u>
4/10	3	0816	Manual (1) <u>40</u> (2) _____ cntr ok AH <u>6.6</u> Counter (1) <u>40</u> (2) _____
4/11	4	0811	Manual (1) <u>50</u> (2) _____ cntr ok AH <u>6.6</u> Counter (1) <u>50</u> (2) _____
4/12	5	0811	Manual (1) <u>50</u> (2) _____ cntr ok AH <u>6.5</u> Counter (1) <u>50</u> (2) _____
4/13	6	0800	Manual (1) <u>1</u> (2) _____ cntr p/u AH <u>6.4</u> Counter (1) <u>1</u> (2) _____

Sketch



Attard  
Field Person



Interval  15 MIN  60 MIN  
 Count(volume)  Binned(CL/SP)  
 Speed Lane No  1  2

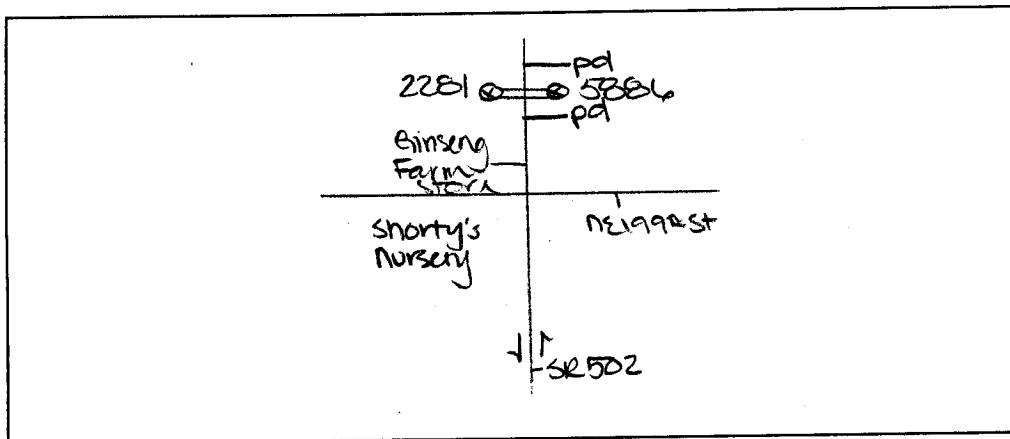
Direction CH #1 \_\_\_\_\_  
 Direction CH #2 \_\_\_\_\_  
 Data Hog # 7066

Counter No. 15- 5886 Count ID HTZ  
 SR 502 RRT/RRQ MP 1.05  
 Leg 2 Direction nb OSID \_\_\_\_\_

Station Description \_ ON SR-502 n10 nE 199<sup>th</sup> St

Date	Day	Time	Comments
4/9/07	2	1226	Manual (1) <u>2</u> (2) _____ set cntr as <u>CIS</u> <span style="float:right">6.4</span> Counter (1) <u>2</u> (2) _____ cntr ok AH
4/10	3	0810	Manual (1) <u>17</u> (2) _____ cntr ok AH <span style="float:right">6.4</span> Counter (1) <u>17</u> (2) _____ "B" tube pulled out ok @ 810
4/11	4	0805	Manual (1) <u>20</u> (2) _____ cntr ok AH <span style="float:right">6.5</span> Counter (1) <u>20</u> (2) _____
4/12	5	0805	Manual (1) <u>15</u> (2) _____ cntr ok AH <span style="float:right">6.3</span> Counter (1) <u>15</u> (2) _____
4/13	6	0800	Manual (1) <u>1</u> (2) _____ cntr p/u AH <span style="float:right">6.6</span> Counter (1) <u>1</u> (2) _____

Sketch



Attard  
Field Person

SR 502 MP 001.05 OFF SYSTEM ID. LEG 2 DIRECTION OF TRAFFIC SOUTHBOUND LANE ALL OF  
COUNT IDENTIFIER ATR COUNTER NUMBER 152281 DESCRIPTION: ON SR 502 N/O NE 199TH ST

04-09-07 MONDAY AM HOURS	CARS PICKUPS	BUS	SINGLE MED	UNITS HVV	4+	SINGLE UNIT %	DOUBLE 4-	UNITS 5	6+	DOUBLE UNIT %	5-	TRAINS 6	7+	TRAIN %	TRUCK %	CLASS UNKNOWN	TOTAL VEHICLES
12 - 1	1																1
1 - 2	2																2
2 - 3	3																3
3 - 4	4																4
4 - 5	5	1	26	1	1	7.9	1	1	1	.8			1	.3	9.0	2	
5 - 6	6		21			3.5									5.1	1	
6 - 7	7		28	2		4.5	1	1	2	.6					7.9	4	
7 - 8	8		15			1.9									4.3	1	
8 - 9	9		5			3.6		1	1	.7					8.1	1	
9 - 10	10		5			5.1	1	1	1	3.0					4.3	1	
10 - 11	11		3			4.8				1.6					6.5	1	
11 - 12	12		29													29	29
AM TOTAL	2725	4	211	11	2	7.6	9	12	7	.9		1	12	.4	8.9	12	3006
PM TOTAL	2725	4	211	11	2	7.6	9	12	7	.9		1	12	.4	8.9	12	3006
DAY TOTAL	2725	4	211	11	2	7.6	9	12	7	.9		1	12	.4	8.9	12	3006
-----																	
2-AXLE EQUIVALENT																	
3087																	

STATE OF WASHINGTON - DEPARTMENT OF TRANSPORTATION  
TRIP SYSTEM  
HOURLY TRAFFIC CLASSIFICATION SUMMARY

SR 502 MP 001.05 OFF SYSTEM ID. LEG 2 DIRECTION OF TRAFFIC SOUTHBOUND LANE ALL OF  
COUNT IDENTIFIER ATR COUNTER NUMBER 152281 DESCRIPTION: ON SR 502 N/O NE 199TH ST

04-10-07 TUESDAY AM HOURS	CARS PICKUPS	BUS	SINGLE MED	UNITS HVY	4+	SINGLE UNIT %	DOUBLE 4-	DOUBLE 5	DOUBLE 6+	DOUBLE UNIT %	5-	TRAINS 6	TRAINS 7+	TRAIN %	TRUCK %	CLASS UNKNOWN	TOTAL VEHICLES
12 - 1	12		2			14.3	1			7.1					14.3		14
1 - 2	13														7.1		14
2 - 3	16														7.1		14
3 - 4	33														7.1		14
4 - 5	91		1			2.9				1.0				1.0			99
5 - 6	395		6		2	6.1	1		1	.7				.7			425
6 - 7	611	3	49		2	6.4	2		1	.7			2	.3	8.7		669
7 - 8	615	3	34		3	7.9	2		3	1.2			8	.4	7.4		666
8 - 9	513	3	50		2	5.9	1		1	.5			2	.4	11.5		582
9 - 10	382		30		1	9.6	2		3	2.3			3	.5	11.5		434
10 - 11	345		36		1	8.8	3		4	2.5			3	.5	12.2		393
11 - 12	278		38		1	11.6	3		5	3.3			4	.5	16.4		335
PM HOURS																	
12 - 1	300		26		1	8.1	3		2	2.3			6	.0	12.5		344
1 - 2	316	1	35		1	10.3	1		4	2.2		1	3	.6	14.1		368
2 - 3	363		25		1	6.5	1		2	1.0			6	.5	9.0		399
3 - 4	367	2	33		1	8.8	4		2	1.0			1	.2	10.0		409
4 - 5	347	1	33		2	9.1	4		4	2.0			1	.3	11.4		394
5 - 6	317	1	17		1	5.3	2		1	.9			2	.6	6.8		340
6 - 7	344		15			4.4	2		1	.8			1	.0	5.2		363
7 - 8	179		8		1	4.7	1		1	1.0			1	.0	6.7		193
8 - 9	168		13			7.1									7.1		182
9 - 10	117		2			1.6				.8					2.5		122
10 - 11	58		1			1.7									1.7		59
11 - 12	34		2		1	7.7			1	2.6			1	.6	12.8		39
AM TOTAL	3304	8	271		13	8.0	17		17	1.4			20	.7	10.1		3683
PM TOTAL	2910	7	210		6	7.0	15		15	1.3			20	.8	9.2		3212
DAY TOTAL	6214	15	481		19	7.6	32		32	1.4			40	.7	9.6	16	6895
					6											2-AXLE EQUIVALENT	7167



SR 502 MP 001.05 OFF SYSTEM ID. LEG 2 DIRECTION OF TRAFFIC SOUTHBOUND LANE ALL OF  
COUNT IDENTIFIER ATR COUNTER NUMBER 152281 DESCRIPTION: ON SR 502 N/O NE 199TH ST

04-12-07 THURSDAY AM HOURS	CARS PICKUPS	BUS	SINGLE MED	UNITS HVV	4+	SINGLE UNIT %	DOUBLE 4-	UNITS 5	6+	DOUBLE UNIT %	5-	TRAINS 6	7+	TRAIN %	TRUCK %	CLASS UNKNOWN	VEHICLES TOTAL
12 - 1	25		1			3.8		2		11.1					3.8		26
1 - 2	15					5.6									16.7		19
2 - 3	19																18
3 - 4	31		4			11.1											36
4 - 5	109		4			3.4		1	1	1.7	1	1		2.8	13.9		116
5 - 6	425		24			5.5		1	3	.2	1			.9	6.0		451
6 - 7	573		43		1	7.7		4	1	1.4	1			.2	5.8	1	633
7 - 8	602		39			6.9	2	1	1	.6	1			.2	7.6		655
8 - 9	532		40			7.8		2	3	.8	1	2	1	1.0	9.7	1	590
9 - 10	374		26			7.8	4	3	4	2.0		1	3	1.2	11.5	2	425
10 - 11	308		26			7.8		3	4	2.0			4	.6	10.5		344
11 - 12	309		35		3	10.8	2	4	1	1.9			5	1.4	14.2		360
PM HOURS																	
12 - 1	334		24		2	7.3	2	2	3	1.9			4	1.1	10.2		372
1 - 2	319		27		2	8.6		3	2	1.4		1	3	1.1	11.1		359
2 - 3	368		28		1	6.9	2	1	2	1.2			3	1.7	8.9		404
3 - 4	370		37			9.4	3	2	2	1.2			2	.5	11.1		416
4 - 5	334	1	26	3		8.0	3	2	1	1.3	1		3	1.1	10.5		373
5 - 6	333		14			4.0	1	1	1	.9			1	.3	5.1		351
6 - 7	277		19			6.4		1		.3					6.7		297
7 - 8	176		11			5.9									5.9	1	188
8 - 9	120		9			6.9		1		.8					7.6		131
9 - 10	109		10			8.3			1	.8					9.2		120
10 - 11	60		6			9.1									9.1		66
11 - 12	45		2			4.2									4.2	1	48
AM TOTAL	3322		243		20	7.5	10	21	17	1.3	3	4	15	.6	9.4	7	3673
PM TOTAL	2845		213		7	7.2	11	13	9	1.1	1	1	16	.6	8.9	3	3125
DAY TOTAL	6167		456		27	7.4	21	34	26	1.2	4	5	31	.6	9.1	10	6798
															2-AXLE EQUIVALENT		7030

SR 502 MP 001.05 OFF SYSTEM ID. LEG 2 DIRECTION OF TRAFFIC SOUTHBOUND LANE ALL OF  
COUNT IDENTIFIER ATR COUNTER NUMBER 152281 DESCRIPTION: ON SR 502 N/O NE 199TH ST

FRIDAY AM HOURS	CARS PICKUPS	BUS	SINGLE MED	UNITS HVY	4+	SINGLE UNIT %	DOUBLE UNITS	5-	6	7+	TRAIN %	TRUCK %	CLASS UNKNOWN	TOTAL VEHICLES
12 - 1	19		1	1		9.1	4-	5	1		4.5	13.6		22
1 - 2	10		1			8.3					8.3	16.7		12
2 - 3	16		2			10.5		1			5.3	15.8		19
3 - 4	32		2			5.6	1				2.8	11.1		36
4 - 5	95		7			8.5		1		1	.9	10.4		106
5 - 6	385		34			8.2		4		1	1.4	9.8		428
6 - 7	530		39			7.5		4			1.2	8.7		585
7 - 8	466		22			5.2		1			1.4	6.6		499
8 - 9														
9 - 10														
10 - 11														
11 - 12														
PM HOURS														
12 - 1														
1 - 2														
2 - 3														
3 - 4														
4 - 5														
5 - 6														
6 - 7														
7 - 8														
8 - 9														
9 - 10														
10 - 11														
11 - 12														
AM TOTAL	1553		5	108	8	7.1	7	12	6	1.5	1	8.7	5	1707
PM TOTAL														
DAY TOTAL	1553		5	108	8	7.1	7	12	6	1.5	1	8.7	5	1707

04-09-07 THRU 04-13-07  
AVERAGE WEEKDAY CLASSIFICATION VOLUMES \*\*\*\*\*  
CARS PICKUPS | BUS MED HVY | SINGLE UNIT % | DOUBLE UNITS | DOUBLE UNIT % | TRAINS | TRAIN % | TRUCK % | CLASS UNKNOWN | TOTAL VEHICLES  
6194 | 16 | 456 | 30 | 3 | 7.4 | 29 | 36 | 27 | 1.3 | 6 | 3 | 37 | .7 | 9.4 | 12 | 6850  
TOTAL HOURS FOR COUNT 91  
3 DAYS FACTOR GROUP CB-02  
AVG WEEKDAY VOL 6850 X SEASONAL ADJ. FACTOR 0.9700 = ESTIMATED AVG DAILY TRAFFIC 6645  
AMD 2-AXLE EQUIVALENT

STATE OF WASHINGTON - DEPARTMENT OF TRANSPORTATION  
TRIP SYSTEM  
HOURLY TRAFFIC CLASSIFICATION SUMMARY

SR 502 MP 001.05 OFF SYSTEM ID. LEG 2 DIRECTION OF TRAFFIC NORTHBOUND LANE ALL OF  
COUNT IDENTIFIER ATR COUNTER NUMBER 155886 DESCRIPTION: ON SR 502 N/O NE 199TH ST

04-09-07 MONDAY AM HOURS	CARS PICKUPS	BUS	SINGLE MED	UNITS HVVY	4+	SINGLE UNIT %	DOUBLE 4-	UNITS 5	6+	DOUBLE UNIT %	5-	TRAINS 6	7+	TRAIN %	TRUCK %	CLASS UNKNOWN	TOTAL VEHICLES
12 - 1	377	1	59	2	1	13.8	3	5	2	2.2	1	1	5	1.5	17.5		457
1 - 2	385	2	88	1	1	12.8	4	2	4	2.4	1	1	4	1.1	16.3		460
2 - 3	525	2	88	3	1	14.9	6	1	1	1.1			2	.3	16.4		629
3 - 4	582	4	110	3		16.5	1	4	1	.7	1	2	2	.3	17.5	1	707
4 - 5	647	1	81	1		11.3	2	2	1	.4		1	1	.3	12.2		737
5 - 6	419	1	57	1		12.2	2	2	2	.4			1	.4	13.0	1	483
6 - 7	296		38			11.2	2	2	1	1.5					12.6	1	340
7 - 8	522		53			9.1	3	1	1	1.0					10.2	1	581
8 - 9	255		26			9.1	1	1		1.4					10.5	1	286
9 - 10	112		10			8.2									8.2		122
10 - 11	83		12			12.5		1		1.0					13.5		96
11 - 12																	
AM TOTAL	4203	11	590	11	2	12.5	26	18	12	1.1	4	1	15	.4	14.1	5	4898
PM TOTAL	4203	11	590	11	2	12.5	26	18	12	1.1	4	1	15	.4	14.1	5	4898
DAY TOTAL	4203	11	590	11	2	12.5	26	18	12	1.1	4	1	15	.4	14.1	5	4898

2-AXLE EQUIVALENT





HOURLY TRAFFIC CLASSIFICATION SUMMARY

SR 502 MP 001.05 OFF SYSTEM ID. LEG 2 DIRECTION OF TRAFFIC NORTHBOUND LANE ALL OF  
 COUNT IDENTIFIER ATR COUNTER NUMBER 155886 DESCRIPTION: ON SR 502 N/O NE 199TH ST

DAY	AM HOURS	PM HOURS	CARS PICKUPS	BUS	SINGLE MED	HVY	4+	SINGLE UNIT %	DOUBLE 4-	5	6+	DOUBLE UNIT %	5-	6	7+	TRAIN %	TRUCK %	CLASS UNKNOWN	TOTAL VEHICLES
04-11-07	12 - 1	1	55	1	6			11.3									11.3		62
WEDNESDAY	1 - 2	2	31		2			6.1									6.1		33
AM TOTAL	12 - 12	12	86	1	8			17.4									17.4		95
1 - 2	2	2	25		1			3.7		1							7.4		27
2 - 3	3	3	30		2			6.3									6.3		32
3 - 4	4	4	15		2			11.8									11.8		17
4 - 5	5	5	42		8			15.4	2			3.8					19.2		52
5 - 6	6	6	109		21			15.4	4	1		3.0					19.1		136
6 - 7	7	7	158	4	27			16.5	1	1	4	3.7					21.0	1	200
7 - 8	8	8	196	3	32	1	1	15.7	2	10	2	1.7					18.6		242
8 - 9	9	9	213	3	31	3	1	13.4	1	4	3	5.2					20.8	1	269
9 - 10	10	10	214	3	31	3		13.9	2	4	4	3.8					19.2	1	266
10 - 11	11	11	265	3	40	2		13.7	5	5	4	4.3					18.8	2	329
11 - 12	12	12	312	1	39			10.9	6	1	3	2.7					14.9	1	368
PM TOTAL	1 - 12	12	305	4	44	1	2	13.9	5	1	3	1.9					16.8	1	368
1 - 2	2	2	352	1	55	2		13.7	1	5	1	1.7					16.4	1	422
2 - 3	3	3	530	2	56	5	4	11.0	4	2	1	1.1		1			12.2	5	609
3 - 4	4	4	618	3	84	4	3	13.0	2	1	5	1.1					14.3	1	721
4 - 5	5	5	631	2	62	1	2	9.5	2	3	1	.9					10.2	3	706
5 - 6	6	6	473		54			10.1	3	1	1	.6	1				11.4		534
6 - 7	7	7	330		24	1		7.0	2			.8					7.6		357
7 - 8	8	8	276		20			7.0	1	1	1	.7					7.7		299
8 - 9	9	9	228	1	18			7.3	1	1		.8					8.1		248
9 - 10	10	10	135		11			7.5	1			.7					8.2		147
10 - 11	11	11	100	1	11			10.6		1		.9					11.5		113
11 - 12	12	12	1353	15	203	12	2	13.9	17	22	17	3.4					18.4	5	1665
AM TOTAL	12 - 12	12	4290	15	478	14	11	10.6	27	17	13	1.2		1	1	14	12.1	11	4892
PM TOTAL	1 - 12	12	5643	30	681	26	13	11.4	44	39	30	1.7		1	1	33	13.7	16	6557
DAY TOTAL																			6832

2-AXLE EQUIVALENT



SR 502 MP 001.05 OFF SYSTEM ID. LEG 2 DIRECTION OF TRAFFIC NORTHBOUND LANE ALL OF  
COUNT IDENTIFIER ATR COUNTER NUMBER 155886 DESCRIPTION: ON SR 502 N/O NE 199TH ST

04-13-07	FRIDAY	AM HOURS	CARS PICKUPS	BUS	SINGLE MED	HVY	4+	SINGLE UNIT %	DOUBLE 4-	5	6+	DOUBLE UNIT %	5-6	TRAINS 6	7+	TRAIN %	TRUCK %	CLASS UNKNOWN	TOTAL VEHICLES
12 - 1	1	44	38	6	1	1	13.5	8.9	1	1	1	1.9	4.4	15.4	4	15.6	52	45	
1 - 2	2	25	19	1	1	1	3.7	9.5	1	1	1	3.7	27	7.4	21	9.5	21	27	
2 - 3	3	19	19	1	1	1	8.7	8.7	1	1	1	4.3	13.0	6.5	1	13.6	44	23	
3 - 4	4	38	38	2	2	1	6.8	6.8	1	1	1	4.5	4.5	11.6	1	11.6	138	44	
4 - 5	5	121	121	1	13	1	10.9	10.9	1	1	1	7	7	11.6	1	11.6	138	138	
5 - 6	6																		
6 - 7	7																		
7 - 8	8																		
8 - 9	9																		
9 - 10	10																		
10 - 11	11																		
11 - 12	12																		
PM HOURS																			
12 - 1	1																		
1 - 2	2																		
2 - 3	3																		
3 - 4	4																		
4 - 5	5																		
5 - 6	6																		
6 - 7	7																		
7 - 8	8																		
8 - 9	9																		
9 - 10	10																		
10 - 11	11																		
11 - 12	12																		
AM TOTAL		304	304	2	28	4	9.7	9.7	1	5	2	2.3	1	1	1	.6	12.6	2	350
PM TOTAL		304	304	2	28	4	9.7	9.7	1	5	2	2.3	1	1	1	.6	12.6	2	350
DAY TOTAL		304	304	2	28	4	9.7	9.7	1	5	2	2.3	1	1	1	.6	12.6	2	350

04-09-07 THRU 04-13-07

AVERAGE WEEKDAY CLASSIFICATION VOLUMES \*\*\*\*\*

CARS PICKUPS	BUS MED	SINGLE HVY	4+	SINGLE UNIT %	DOUBLE 4-	5	6+	DOUBLE UNIT %	5-6	TRAINS 6	7+	TRAIN %	TRUCK %	CLASS UNKNOWN	TOTAL VEHICLES	
5702	26	693	24	9	11.4	41	43	33	1.8	3	3	33	.6	13.7	13	6622
TOTAL HOURS FOR COUNT 90																
3 DAYS FACTOR GROUP CB-02																
AVG WEEKDAY VOL 6622 X SEASONAL ADJ. FACTOR 0.9700 = ESTIMATED AVG DAILY TRAFFIC 6425																
AMD 2-AXLE EQUIVALENT																

DOT-RNB505A-B

STATE OF WASHINGTON - DEPARTMENT OF TRANSPORTATION  
TRIP SYSTEM  
HOURLY TRAFFIC CLASSIFICATION SUMMARY

DATE 05/31/07  
TIME 07:22:12  
PAGE 341

SR 502 MP 001.05 OFF SYSTEM ID. LEG 2 DIRECTION OF TRAFFIC BOTH WAYS LANE ALL OF  
COUNT IDENTIFIER ATR COUNTER NUMBER 155886 DESCRIPTION: ON SR 502 N/O NE 199TH ST

04-09-07 MONDAY AM HOURS	CARS PICKUPS	BUS	SINGLE MED	UNITS HVY	4+	SINGLE UNIT %	DOUBLE 4-	UNITS 5	6+	DOUBLE UNIT %	5-	TRAINS 6	7+	TRAIN %	TRUCK %	CLASS UNKNOWN	TOTAL VEHICLES	
12 - 1	663	2	98	4	1	13.2	6	6	2	1.8	1	1	12	1.8	16.7	1	796	
1 - 2	712	2	82	5	1	10.8	8	5	7	2.4	1	1	7	1.1	14.3	1	832	
2 - 3	858	4	131	5	1	13.9	5	4	1	1.0	1	1	3	.3	15.2	2	1014	
3 - 4	914	5	136	4	1	13.6	2	5	1	.7	1	3	3	.3	14.6	3	1074	
4 - 5	989	1	102	1		9.4	2	2	1	.5	1	1	1	.2	10.1	1	1101	
5 - 6	1042	1	85	3		7.8	1	2	4	.5	1	1	1	.2	8.5	5	1144	
6 - 7	468		53			10.0	2	1	1	.9					10.9	4	530	
7 - 8	654		58			8.1	5	2	1	1.0					9.0	4	719	
8 - 9	346		31			8.1	1	1	1	1.8					9.9	1	385	
9 - 10	170		13			7.1	4	1	1	.5					7.6	1	184	
10 - 11	112		12			9.6	1	1	1	.8					10.4	1	125	
11 - 12																		
AM TOTAL	6928	15	801	22	4	10.7	35	30	19	1.1	4	2	27	.4	12.1	17	7904	
PM TOTAL	6928	15	801	22	4	10.7	35	30	19	1.1	4	2	27	.4	12.1	17	7904	
DAY TOTAL	6928	15	801	22	4	10.7	35	30	19	1.1	4	2	27	.4	12.1	17	7904	
																		8115

2-AXLE EQUIVALENT

SR 502 MP 001.05 OFF SYSTEM ID. LEG 2 DIRECTION OF TRAFFIC BOTH WAYS LANE ALL OF  
COUNT IDENTIFIER ATR COUNTER NUMBER 155886 DESCRIPTION: ON SR 502 N/O NE 199TH ST

04-10-07 TUESDAY AM HOURS	CARS PICKUPS	BUS	SINGLE MED	UNITS HVV	4+	SINGLE UNIT %	DOUBLE 4-	UNITS 5	DOUBLE 6+	DOUBLE UNIT %	5-	TRAINS 6	7+	TRAIN %	TRUCK %	CLASS UNKNWN	TOTAL VEHICLES
12 - 1	59		10			14.5									14.5		59
1 - 2	41		4			8.3	1	1		4.2	1			2.1	14.6		48
2 - 3	41		3			6.5		1	1	2.2		2	8	1.6	10.9	1	46
3 - 4	51		1			1.9		1	1	1.9	1	1	1	1.9	5.6		54
4 - 5	113	1	6			5.6		1	1	1.6	1			.8	8.1	1	124
5 - 6	436		29			6.5	1	1	4	1.3				.2	8.0		474
6 - 7	711	3	79			10.7	3	1	4	1.0			4	.5	11.7	1	806
7 - 8	791	3	56			7.2	8	3	5	1.6			8	.5	9.3	2	874
8 - 9	702	5	97			12.9	2	2	2	.7			8	1.0	14.6	5	828
9 - 10	604	2	76			11.8	4	9	7	2.8	1		8	1.1	15.7	2	719
10 - 11	567	1	66			10.9	4	9	5	2.7	1		4	.8	14.3	1	665
11 - 12	513	1	79			13.1	7	7	6	3.2	1		8	1.4	17.7	3	627
PM HOURS																	
12 - 1	583	4	67			10.7	4	6	7	2.5	1		8	1.3	14.5	1	683
1 - 2	635	2	74			10.9	4	7	7	2.4	2		8	1.6	14.9	1	746
2 - 3	715	2	75			9.8	3	4	7	1.1	1	2	8	1.0	11.9	1	813
3 - 4	883	3	94			10.4	3	4	6	1.3		1	3	.3	12.0	1	1004
4 - 5	975	4	125			11.7	7	7	3	1.5	1	1	1	.3	13.4	5	1132
5 - 6	1004	2	103			9.4	4	2	1	.6			3	.3	10.3	1	1119
6 - 7	848	3	56			6.4	9	2	3	.7	1		1	.2	8.1	1	924
7 - 8	513	1	26			5.3	2	1	1	.5	1		1	.4	6.4	1	549
8 - 9	445		41			8.4	1	1	1	.8			1	.5	9.2	1	491
9 - 10	350		14			4.1				.5			1	.3	4.9	2	370
10 - 11	200		7			3.3				.5			1	.5	4.3		209
11 - 12	124		16			11.6	2	2		2.7		1	1	.7	15.1		146
AM TOTAL	4629	16	506			10.3	30	36	32	1.8	6	6	33	.7	12.9	15	5332
PM TOTAL	7275	21	698			9.1	40	36	34	1.3	6	6	33	.5	11.0	13	8186
DAY TOTAL	11904	37	1204			9.6	70	72	66	1.5	12	6	66	.6	11.7	28	13518
															2-AXLE EQUIVALENT		14056

SR 502 MP 001.05 OFF SYSTEM ID. LEG 2 DIRECTION OF TRAFFIC BOTH WAYS LANE ALL OF  
COUNT IDENTIFIER ATR COUNTER NUMBER 155886 DESCRIPTION: ON SR 502 N/O NE 199TH ST

04-11-07 WEDNESDAY AM HOURS	CARS PICKUPS	BUS	SINGLE MED	UNITS HVY	4+ UNIT	SINGLE %	DOUBLE 4-	UNITS 5	DOUBLE 6+	UNITS %	5-	TRAINS 6	7+	TRAIN %	TRUCK %	CLASS UNKNWN	TOTAL VEHICLES
12 - 1	79	1	8			10.2									10.2		88
1 - 2	55		4			6.6				3.3					9.8		61
2 - 3	43		2			4.3	1		2	4.3					8.5		47
3 - 4	64		4			5.8					1				7.2		69
4 - 5	116		10			7.8				1.6					9.4		128
5 - 6	443		35	1		7.4	2		2	1.2		1			9.0		487
6 - 7	686	2	73	5	1	10.2	2	2	2	1.8		1	1	.4	12.1	4	785
7 - 8	761	7	59	3	1	8.2	2	2	3	1.5		1	4	.7	10.4	2	852
8 - 9	748	8	66	6	1	9.4	3	4	3	1.2	1		10	1.3	11.9	1	850
9 - 10	605	1	63	6	1	10.0	3	13	3	3.4			11	1.5	14.9	1	712
10 - 11	534	3	51	6	1	9.9	3	6	6	2.4			8	1.3	13.6	1	619
11 - 12	599	4	73	7		11.7	8	8	8	3.3			7	1.0	16.0	3	717
PM HOURS																	
12 - 1	608	2	61	5		9.6	8	5	6	2.7			9	1.3	13.6	1	705
1 - 2	609	4	68	4	2	11.0	6	4	3	1.8			10	1.4	14.2	1	711
2 - 3	715	1	84	3		10.6	3	10	3	1.9		2	5	.8	13.4	2	828
3 - 4	871	4	90	9	4	10.7	8	5	3	1.6			4	.4	12.6	6	1004
4 - 5	965	4	103	7	3	10.7	2	4	5	1.0	1		3	.4	12.0	3	1097
5 - 6	955	3	80	2	2	8.3	6	3	1	.9	1		1	.2	9.1	3	1054
6 - 7	774		69	3		8.4	4	2	1	.8				.9	9.5	1	856
7 - 8	519		35	2		6.6	3	1		.5				.7	7.2		559
8 - 9	416	1	27	1		6.3	1	1	2	.7	1			.5	7.1	1	448
9 - 10	334		24			6.6	1	3		1.1				.2	8.2		364
10 - 11	202		12			5.6				.5				.6	6.0		216
11 - 12	144	1	12			8.2	1	1		.6				.6	8.9	1	158
AM TOTAL	4733	26	448	34	3	9.4	36	43	33	2.1	3	2	42	.9	12.4	12	5415
PM TOTAL	7112	20	665	35	11	9.1	42	38	23	1.3	5	2	32	.5	10.9	15	8000
DAY TOTAL	11845	46	1113	69	14	9.3	78	81	56	1.6	8	4	74	.6	11.5	27	13415
															2-AXLE EQUIVALENT		13980

STATE OF WASHINGTON - DEPARTMENT OF TRANSPORTATION  
 TRIP SYSTEM  
 HOURLY TRAFFIC CLASSIFICATION SUMMARY

SR 502	MP 001.05	OFF SYSTEM ID.	COUNTER NUMBER	155886	LEG 2	DESCRIPTION: ON SR 502 N/O NE 199TH ST	DIRECTION OF TRAFFIC	BOTH WAYS	LANE ALL	OF					
04-12-07	THURSDAY														
AM HOURS	CARS PICKUPS	BUS	SINGLE MED	HVY	4+	SINGLE UNIT %	DOUBLE 4-5	6+	DOUBLE UNIT %	5-6	7+	TRAIN %	TRUCK %	CLASS UNKNOWN	TOTAL VEHICLES
12 - 1	84		8			8.7							8.7		92
1 - 2	45		4			7.5							15.1		53
2 - 3	41		4			4.4							8.9		45
3 - 4	50		4			7.3							9.1		55
4 - 5	121		5			3.9							6.2		129
5 - 6	462		27		1	5.7							6.5		494
6 - 7	697		59		4	8.4							9.9	1	775
7 - 8	772		64		5	8.5							10.6	4	868
8 - 9	733		59		4	8.5							11.7	4	832
9 - 10	581		63		4	10.8							15.0	2	686
10 - 11	506		52		2	9.9							13.7	2	586
11 - 12	562		71		6	12.1							15.8	1	669
PM HOURS															
12 - 1	643		70		6	10.3							15.3	2	759
1 - 2	685		72		6	10.4							13.1	2	791
2 - 3	800		68		1	8.0							10.2	1	891
3 - 4	885		111		3	11.4							13.6	1	1025
4 - 5	931		95		8	9.9							12.0	2	1060
5 - 6	991		101		2	9.7							10.2	1	1104
6 - 7	730		64		1	8.1							8.5	2	798
7 - 8	521		45		3	7.9							8.7	1	573
8 - 9	406		36		2	8.0							9.2	1	448
9 - 10	353		28		3	7.6							7.8	1	383
10 - 11	206		14		1	6.3							7.2	1	223
11 - 12	135		9		1	6.2							6.8	1	146
AM TOTAL	4654		26		29	9.0							11.7	10	5284
PM TOTAL	7286		16		23	9.2							11.0	10	8201
DAY TOTAL	11940		42		52	9.1							11.3	20	13485
															14032

2-AXLE EQUIVALENT



SR 502 MP 001.05 OFF SYSTEM ID. LEG 2 DIRECTION OF TRAFFIC BOTH WAYS LANE ALL OF  
 COUNT IDENTIFIER ATR COUNTER NUMBER 155886 DESCRIPTION: ON SR 502 N/O NE 199TH ST

04-13-07	CARS PICKUPS	BUS MED	SINGLE HVY	4+	SINGLE UNIT %	DOUBLE 4-	5	6+	DOUBLE UNIT %	5-	TRAINS 6	7+	TRAIN %	TRUCK %	CLASS UNKNOWN	TOTAL VEHICLES
FRIDAY	63	7	2	1	12.2	1	2	1	2.7			1	1.8	14.9		74
AM HOURS	48	4	1	1	8.8	1	1	1	5.3			1	1.8	15.8		57
12 - 1	41	3			6.5				4.3					10.9		46
1 - 2	51	1			7.0	1	1	1	1.8	1			1.8	10.5		57
2 - 3	114	1	1	1	8.5		2	1	1.6			1	.8	10.9		129
3 - 4	423	36	2	2	8.1	1	6	1	1.7	1		1	.4	10.2		472
4 - 5	651	52	5	5	8.2	4	1	3	1.1			1	9.3		5	723
5 - 6																
6 - 7																
7 - 8																
8 - 9																
9 - 10																
10 - 11																
11 - 12																
AM TOTAL	1391	4	114	11	8.3	7	13	6	1.7	2		3	.3	10.3		1558
PM TOTAL	1391	4	114	11	8.3	7	13	6	1.7	2		3	.3	10.3		1558
DAY TOTAL	1391	4	114	11	8.3	7	13	6	1.7	2		3	.3	10.3		1558

04-09-07 THRU 04-13-07

AVERAGE WEEKDAY CLASSIFICATION VOLUMES \*\*\*\*\*  
 CARS PICKUPS | BUS MED HVY | SINGLE UNIT % | DOUBLE 4- 5 6+ | TRAINS 7+ | TRAIN % | TRUCK % | CLASS UNKNOWN | TOTAL VEHICLES  
 11896 | 42 1149 54 11 | 9.3 | 70 79 61 | 1.6 | 9 6 70 | .6 | 11.5 | 25 | 13473  
 TOTAL HOURS FOR COUNT 90  
 3 DAYS  
 AVG WEEKDAY VOL 13473 X SEASONAL ADJ. FACTOR 0.9700 = ESTIMATED AVG DAILY TRAFFIC 13069  
 PEAK HOUR PERCENTAGES: K = 8.49 D = 57.78 T = 8.48  
 PEAK HOUR LOCATION : VOLUME = 1144 DATE: 04/09/07 TIME: 06:00 PM

*Note: Bus/Med High Vol*