

Federal Highway Administration (FHWA) Transportation and Land Use Scenario Planning Workshop

Co-Sponsors and Hosts:

**Washington Department of Transportation (WSDOT)
Southwest Washington Regional Transportation Council (RTC)**

**Vancouver, Washington
April 28, 2011**



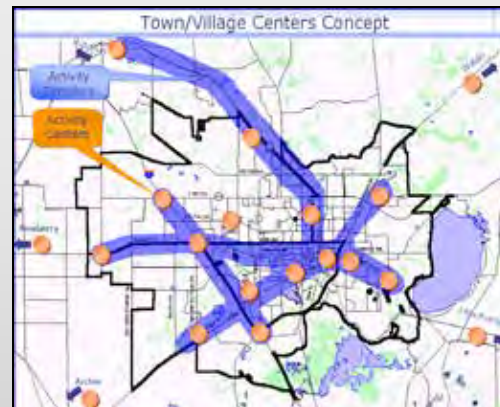
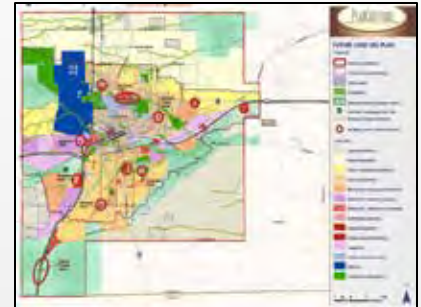
Key Questions

- What is scenario planning?
- What are some benefits of scenario planning?
- How does FHWA support scenario planning?
- What are some examples of noteworthy scenario planning practices?

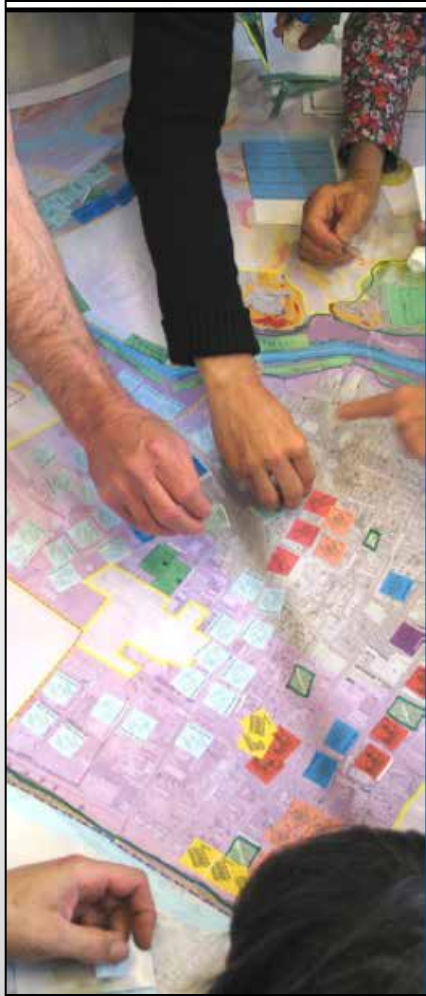


What is Scenario Planning?

- Scenario planning:
 - Creates multiple plausible stories about what the future could be.
 - Develops a common understanding of issues and driving forces of change that affect transportation.
 - Helps assess and prepare for possible future conditions.



What is Scenario Planning?

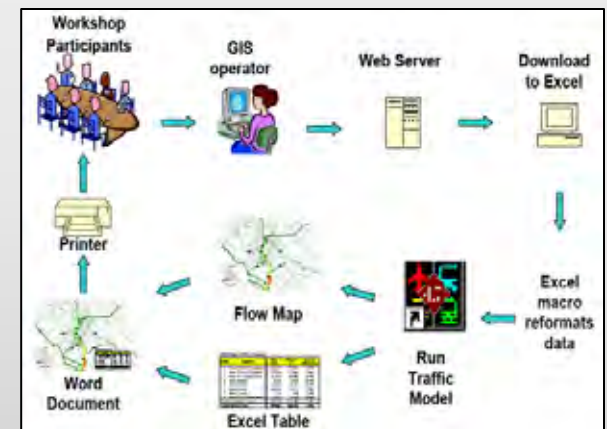


- Integrates transportation and land use planning.
- Helps explain long-term consequences of today's decisions.
- Demonstrates how trade-offs can lead to desired futures.
- Actively engages stakeholders.
- Similar to visioning and alternatives analysis but:
 - Asks “what if...?”
 - Compares and assesses future likely land uses.
 - Examines interactions between multiple factors and trends.



What are Some Benefits of Scenario Planning?

- Scenario planning can support:
 - Strategic transportation and land use decision-making.
 - Active stakeholder involvement.
 - Dialogue among members of the community.
 - Consensus building.



How Does FHWA Support Scenario Planning?

- Through the Scenario Planning Program FHWA:
 - Sponsors scenario planning workshops and webinars.
 - Provides guidance and assistance to agencies using scenario planning.
 - Collects and shares innovative practices and lessons learned through case studies and research.
 - Provides information on tools and resources.

FHWA Scenario Planning Program Website:

www.fhwa.dot.gov/Planning/scenplan/index.htm



FHWA Scenario Planning Initiatives

- Updated website.
 - New online application for scenario planning training.
 - Reports from recent workshops.
- New webinar series.
 - Two webinars planned per year.
 - Focused on a range of topics (e.g., getting started with scenario planning; analyzing and assessing scenarios).
- *Scenario Planning Guidebook*.
 - Suggested six-phase framework for scenario planning.
 - Presents key steps/considerations and examples for each phase.

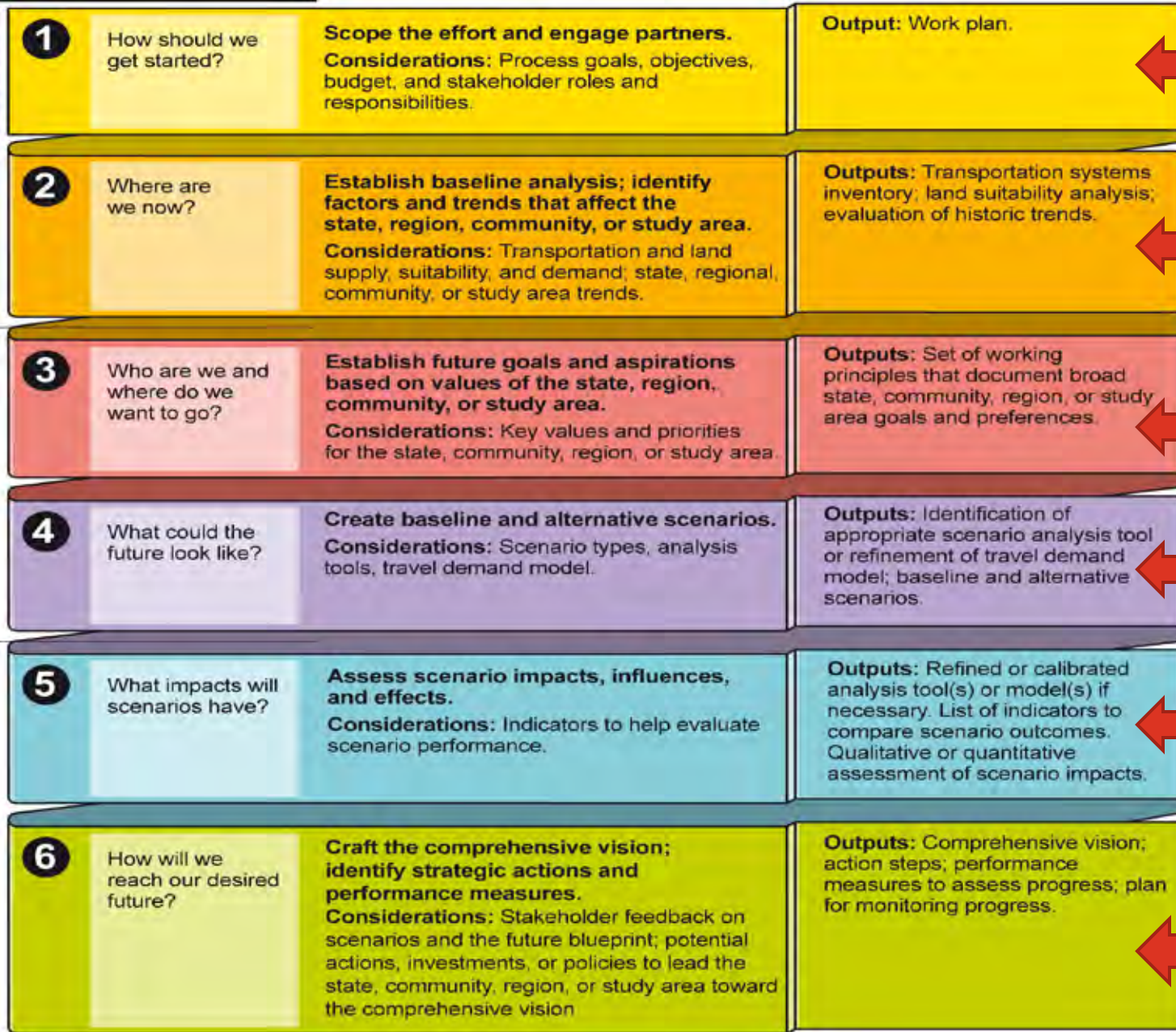


Scenario Planning Guidebook



Stakeholder Involvement Identify, Prepare, and Refine Analysis Tools Data Collection	1 How should we get started?	Scope the effort and engage partners. Considerations: Process goals, objectives, budget, and stakeholder roles and responsibilities.	Output: Work plan.
	2 Where are we now?	Establish baseline analysis; identify factors and trends that affect the state, region, community, or study area. Considerations: Transportation and land supply, suitability, and demand; state, regional, community, or study area trends.	Outputs: Transportation systems inventory, land suitability analysis, evaluation of historic trends.
	3 Who are we and where do we want to go?	Establish future goals and aspirations based on values of the state, region, community, or study area. Considerations: Key values and priorities for the state, community, region, or study area.	Outputs: Set of working principles that document broad state, community, region, or study area goals and preferences.
	4 What could the future look like?	Create baseline and alternative scenarios. Considerations: Scenario types, analysis tools, travel demand model.	Outputs: Identification of appropriate scenario analysis tool or refinement of travel demand model; baseline and alternative scenarios.
	5 What impacts will scenarios have?	Assess scenario impacts, influences, and effects. Considerations: Indicators to help evaluate scenario performance.	Outputs: Refined or calibrated analysis tool(s) or model(s) if necessary. List of indicators to compare scenario outcomes. Qualitative or quantitative assessment of scenario impacts.
	6 How will we reach our desired future?	Craft the comprehensive vision; identify strategic actions and performance measures. Considerations: Stakeholder feedback on scenarios and the future blueprint; potential actions, investments, or policies to lead the state, community, region, or study area toward the comprehensive vision.	Outputs: Comprehensive vision; action steps; performance measures to assess progress; plan for monitoring progress.





Perspectives from Three Examples of National Noteworthy Practices

- High-Growth Region: San Luis Obispo Council of Governments (California).
- Low-Growth Region: Binghamton Metropolitan Transportation Study (New York).
- Corridor Application: Jefferson Area Eastern Planning Initiative (Charlottesville, Virginia).





COMMUNITY 2050: *Planning Tomorrow's Growth Today*

Community residents envision the future

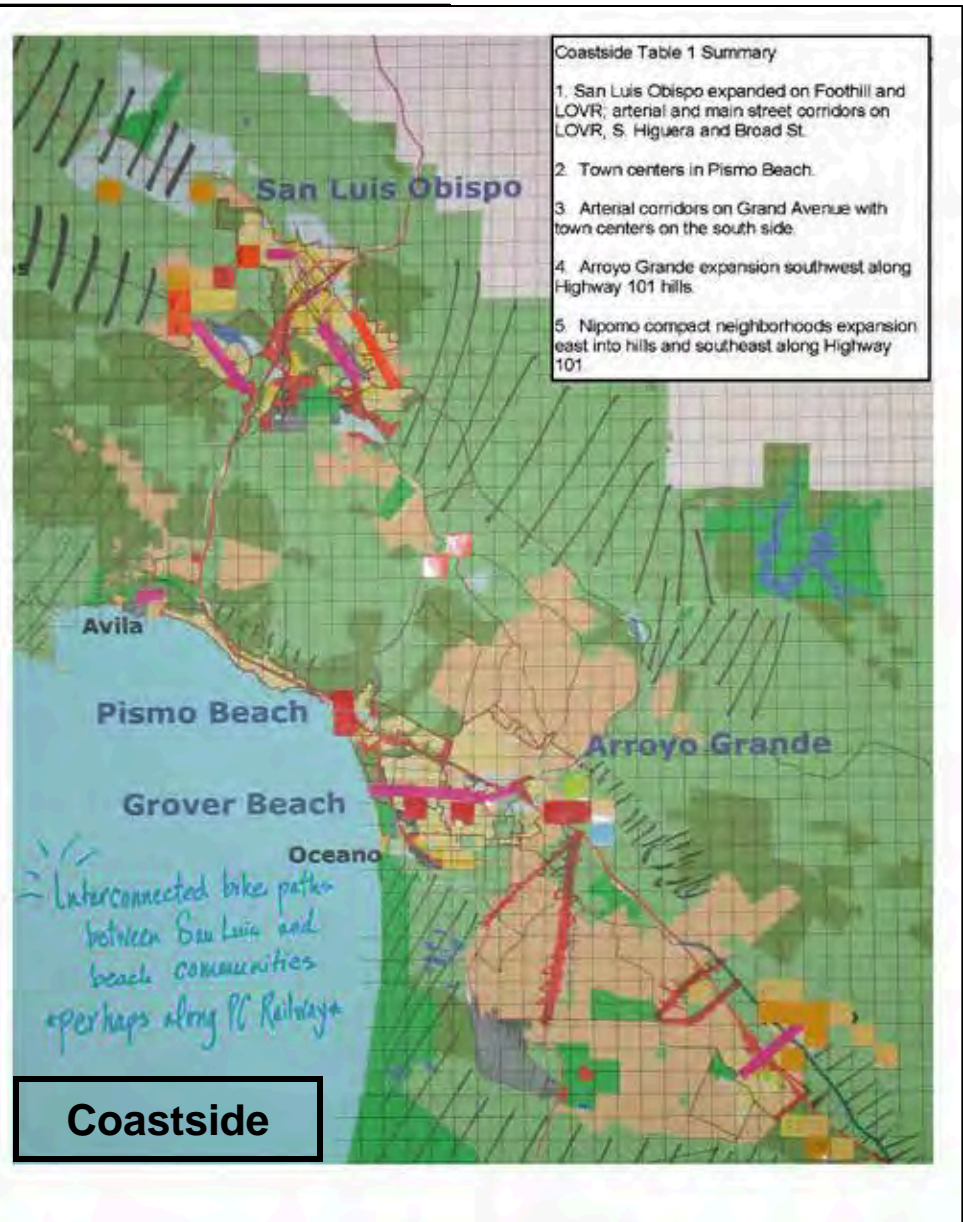
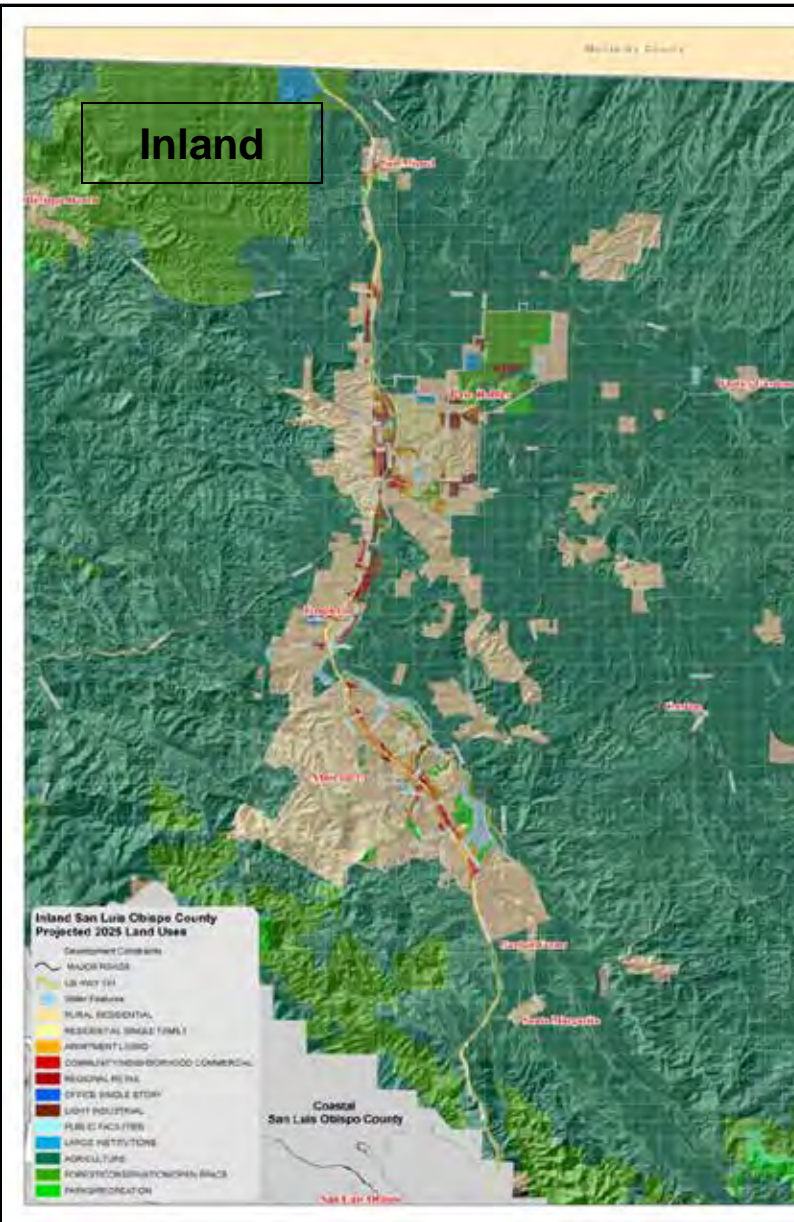


Interactive Polling

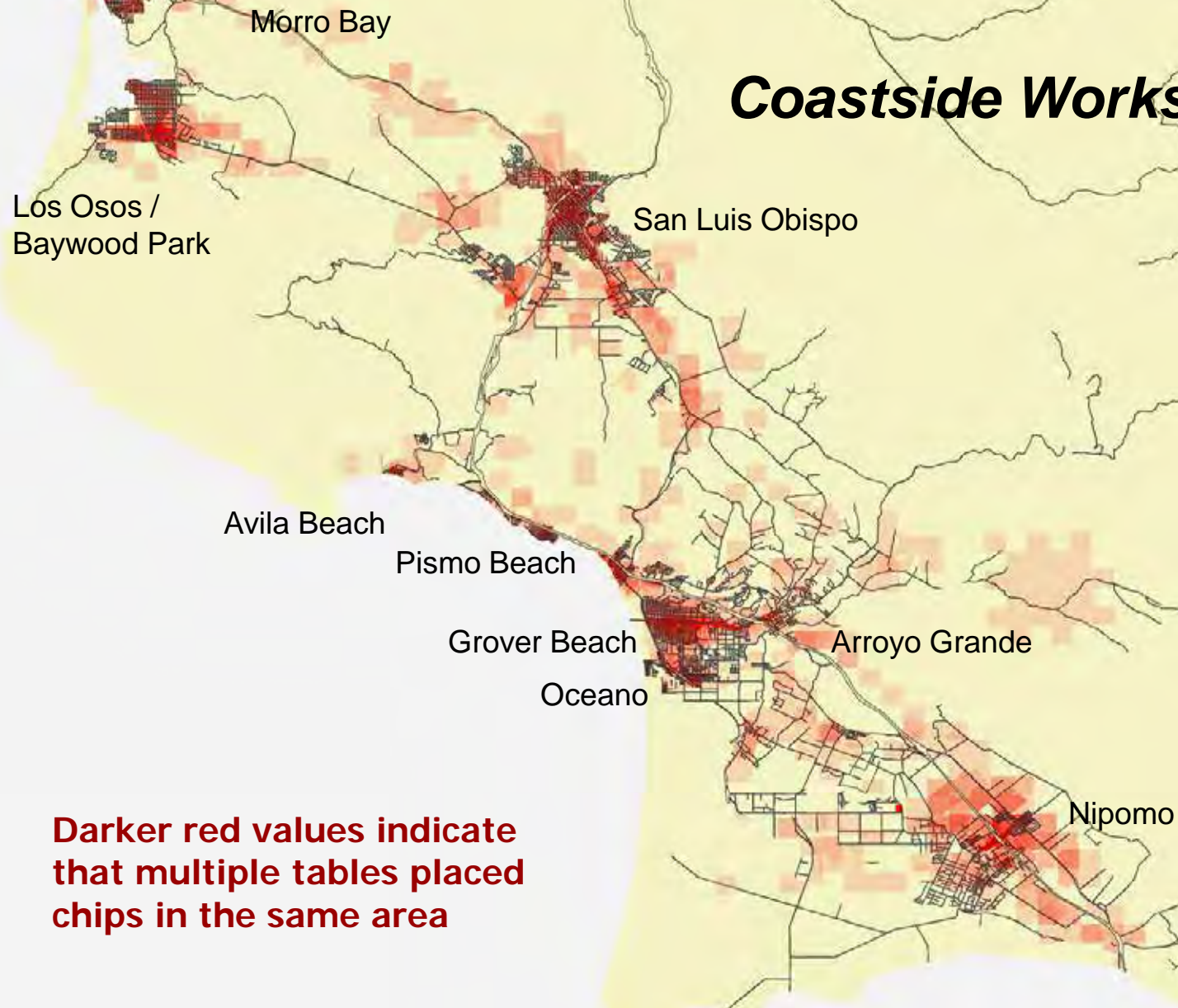
Ranked Summary Concepts

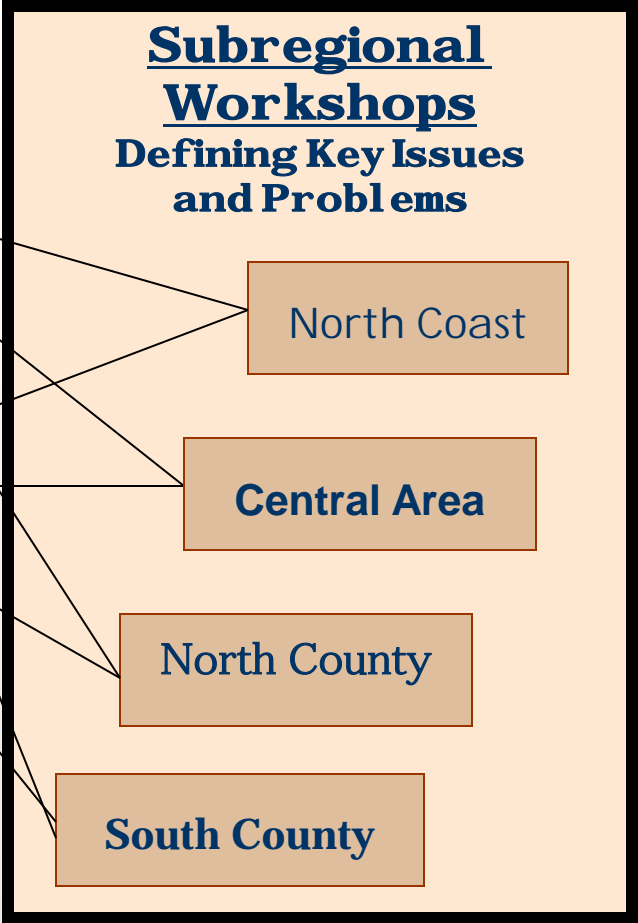
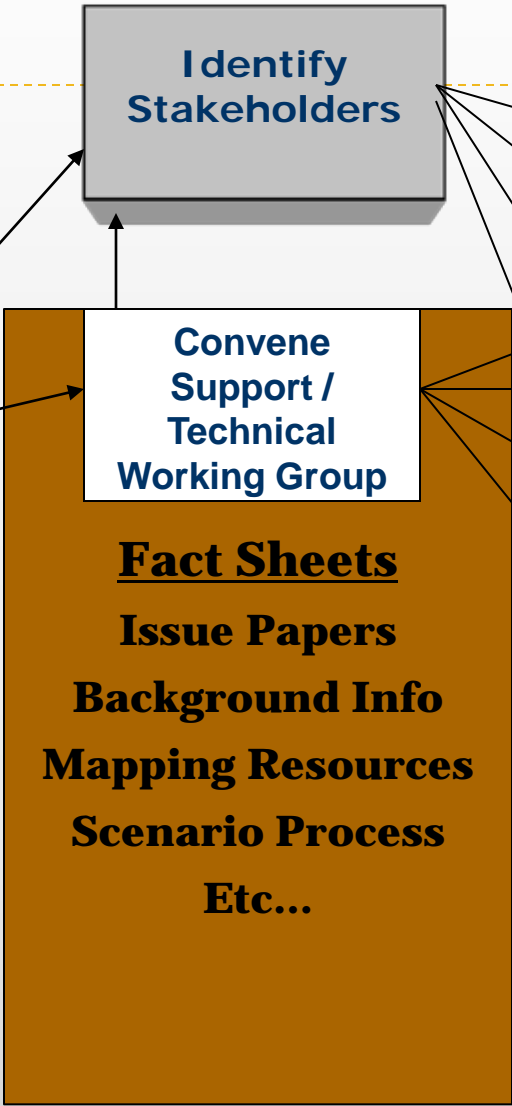
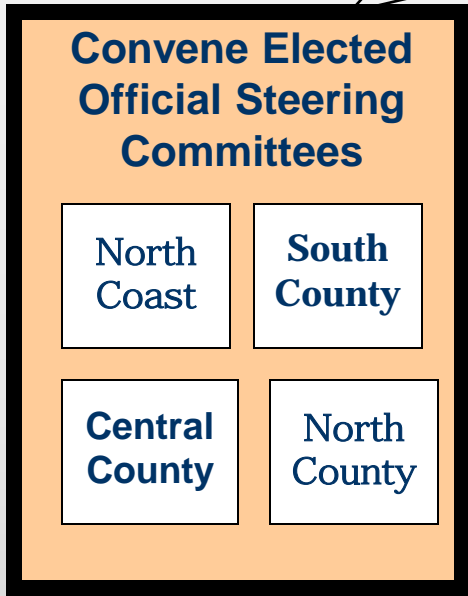
Evaluated Next Steps





Coastside Workshop





Community 2050 Update



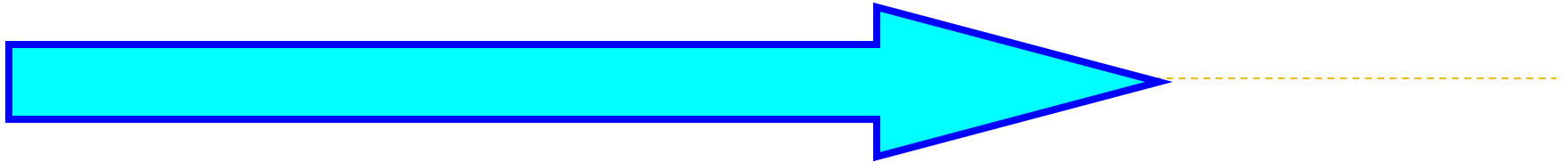
SLOCOG

Steve Devencenzi - Planning Director
sdevencenzi@slocog.org
805-781-4662

Scenario Planning Peer Workshop

Monterey, California
June 1, 2006





PLACEMAKING FOR PROSPERITY



BINGHAMTON METROPOLITAN TRANSPORTATION STUDY



Greater Binghamton

The region had a lot in place to make scenario planning feasible:

- Recent county plan for sustainable economic development.
- Beginnings of revitalization energy downtown.
- Transportation projects to help people understand the reality of BMTS' guiding principle:

INVESTMENT IN THE REGIONAL TRANSPORTATION SYSTEM MUST BE USED TO HELP ACHIEVE REGIONAL AND COMMUNITY DEVELOPMENT GOALS



Community Creates the Vision

Some of it is about land use:

- Revitalize central business districts.
- Carefully shape suburban growth.
- Develop new economic engines.
- Protect natural resources.



Community Creates the Vision

Some of it is about people:

- Attract young professionals.
- Retain mid-career families.
- Support senior population.

Some of it is about institutions:

- Leverage educational resources.
- Build strong partnerships.



Transportation Outcomes

- Rebuild urban “Main Streets” using the principles of placemaking and context sensitive solutions.
- Support Broome County’s economic development plan, but commit to improving access to identified development sites only in the core.
- More information available at:
<http://www.fhwa.dot.gov/planning/scenplan/nyscenplanrpt.htm>



Transportation Outcomes

- Focus on the rivers by completing the Binghamton Metropolitan Greenway System and other riverside projects.
- Safety focus: crash reduction through arterial safety audits; emphasize walkability and the special needs of elderly drivers and pedestrians.
- Transit focus: rationalize and enhance transit operations.



Jefferson Area Eastern Planning Initiative

Project Summary

Updated August 2001



Thomas Jefferson
Planning District
Commission



Thomas Jefferson Planning District



Map of Study Area



Sample Scenario Map

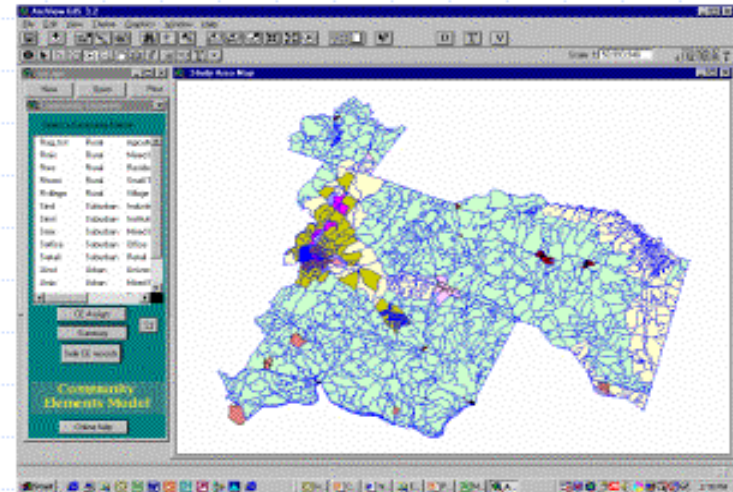
<http://tjpd.org/pdf/transportation/EPITechReport.pdf>



CorPlan Scenarios

Create inventory of existing/enhanced community elements (CE's)

	Land Use Area		Building Square Feet		Total	Avg. Density	Avg. Height	Avg. Floor Area Ratio
	Acres	Sq. Ft.	Sq. Ft.	Sq. Ft.				
Residential	45,000	2,250,000	7,500	150,000	52,500	1.5	3.0	
Commercial	10,000	500,000	10,000	200,000	20,000	2.0	4.0	
Industrial	10,000	500,000	10,000	200,000	20,000	2.0	4.0	
Office	10,000	500,000	10,000	200,000	20,000	2.0	4.0	
Community	10,000	500,000	10,000	200,000	20,000	2.0	4.0	
Public	10,000	500,000	10,000	200,000	20,000	2.0	4.0	
Other	10,000	500,000	10,000	200,000	20,000	2.0	4.0	
Total	100,000	5,000,000	100,000	2,000,000	200,000	2.0	3.5	



Try alternative combinations of CE's to meet growth targets



For Additional Information

FHWA Scenario Planning website:

www.fhwa.dot.gov/Planning/scenplan/index.htm

Contacts:

- FHWA Headquarters
 - Ken Petty (202-366-6654 or Kenneth.Petty@dot.gov)
 - Fred Bowers (202-366-2374 or Frederick.Bowers@dot.gov)
 - Rae Keasler (202-366-0329 or Rae.Keasler@dot.gov)

- USDOT Volpe Center
 - Alisa Fine (617-494-2310 or Alisa.Fine@dot.gov)

- FHWA Resource Center
 - Brian Betlyon (410-962-0086 or Brian.Betlyon@dot.gov)
 - Jim Thorne (708-283-3538 or Jim.Thorne@dot.gov)

